

**ED. E. FEITEL'S**  
**GENERAL DEPARTMENT STORE**  
**CASH AND CARRY**

Harvey, La.

UPtown 9278

BUY AT THE ESSO SIGN

**GEO. M. RITTINER**

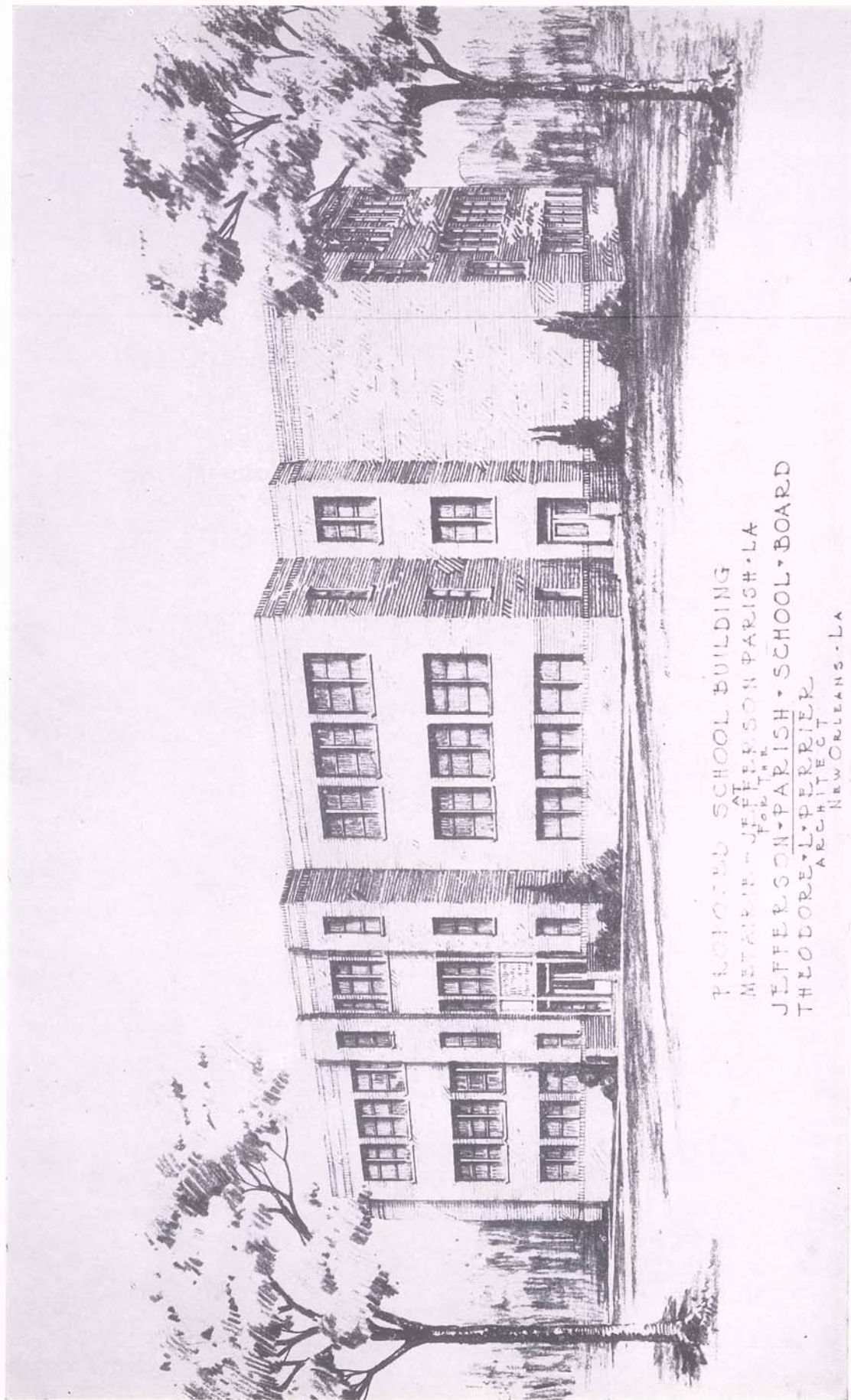


AGENT,  
**STANDARD OIL COMPANY OF LOUISIANA**



Phone UPtown 0924

Harvey, La.



PROPOSED SCHOOL BUILDING  
AT  
JEFFERSON PARISH - LA  
FOR THE  
JEFFERSON PARISH SCHOOL BOARD  
THEODORE L. PERRIER  
ARCHITECT  
NEW ORLEANS - LA

---

## **Penick & Ford, Ltd., Inc.**

Packers of  
**BRER RABBIT Syrups and Molasses**

---

## **Marrero Land & Improvement Assn., Ltd.**

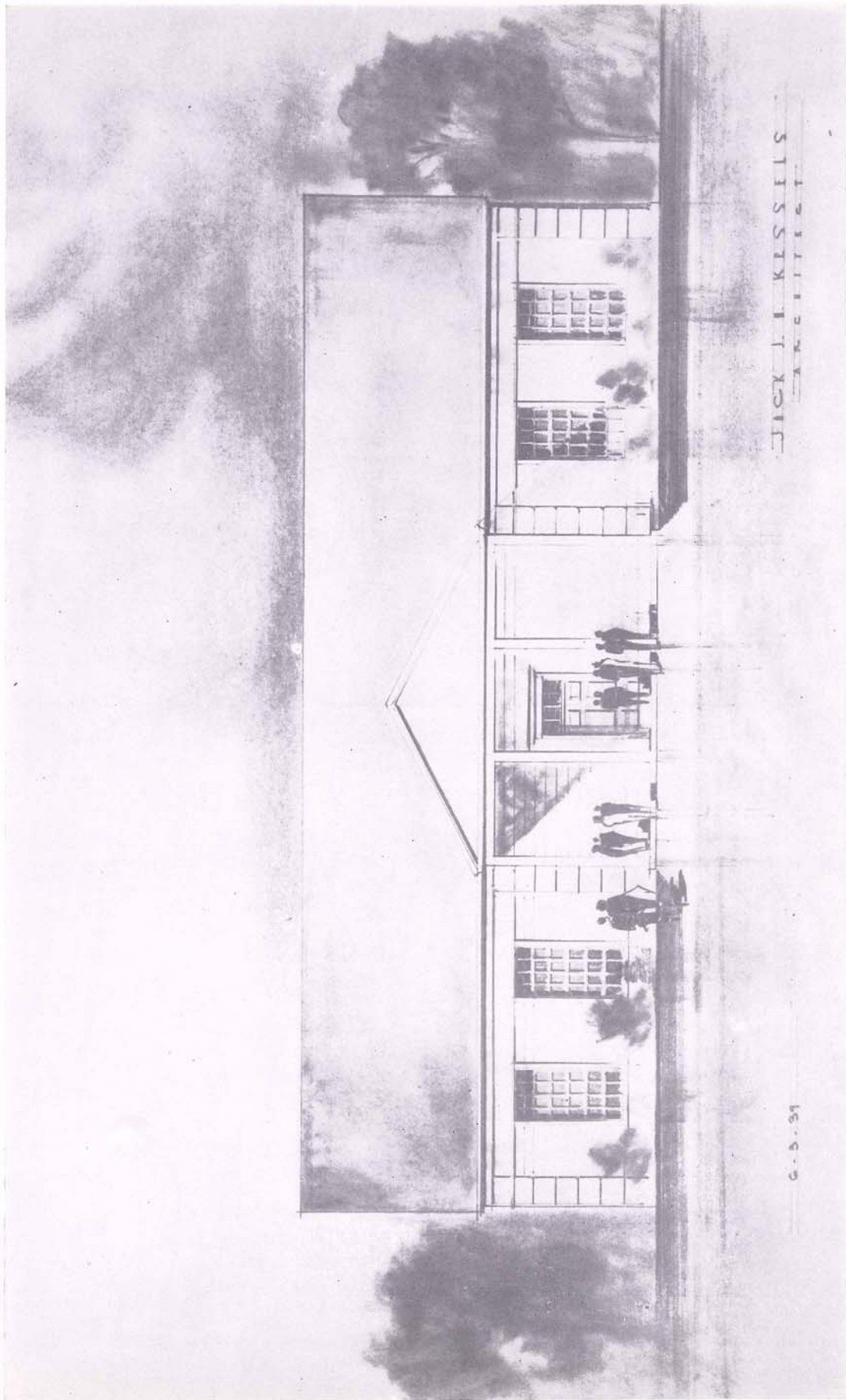
### **REAL ESTATE**

- Residential Sites
- Industrial Locations With River and Railroad Facilities
- Truck Farms
- Dairy Farms

UPtown 1339

**MARRERO, LA.**

**Jefferson Parish**



Under the new building program, two gymnasiums of this type are to be erected, one on each side of the river.

# Hercules Powder Co.

## PAPER MAKERS CHEMICAL DIVISION

FULL LINE OF INDUSTRIAL CHEMICALS

Rosin Sizes, Commercial Alum, Sal. Soda, Soda Ash, Caustic Soda,  
Soap Powders, Silicate of Soda, Cleansing Compounds,  
Trisodium Phosphate, Etc.

BATTERY ACIDS

P. O. Box 332  
MARRERO

UPtown 1210

## MODERN TERMINAL FACILITIES

For Storage, Import and Export of All Bulk Liquids

## GENERAL AMERICAN TANK STORAGE TERMINALS

Can Handle Anything That Will Flow Through a Pipe Line

### TERMINALS

Goodhope, La.; Westwego, La.  
Corpus Christi and Houston, Tex.  
Carteret, N. J.



### OFFICE

135 S. LaSalle Street,  
Chicago

A division of General American Transportation Corporation



Proposed New School for Westwego

*Send Your Radiograms*  
**"VIA TROPICAL"**

FAST, ACCURATE AND RELIABLE SERVICE TO—

BAHAMAS  
 BRITISH HONDURAS  
 COLOMBIA  
 COSTA RICA  
 CUBA  
 GUATEMALA



HONDURAS  
 MEXICO  
 NICARAGUA  
 PANAMA  
 PUERTO RICO  
 SALVADOR

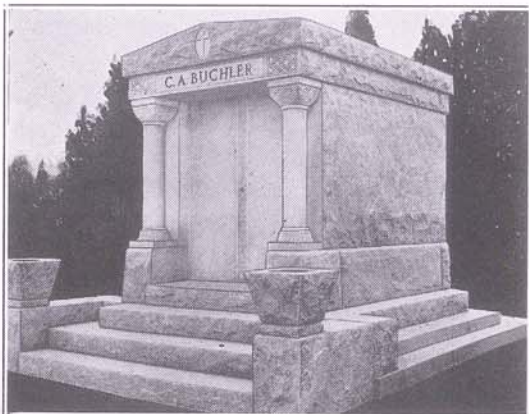
SHIPS AT SEA

**TROPICAL RADIO TELEGRAPH COMPANY**

CEdax 1455—1456

**GENERAL OUTDOOR  
 ADV. CO.**

**NEW ORLEANS**



CONRAD A. BUCHLER family tomb is one of the many outstanding Memorials designed and erected by us in the Metairie Cemetery.

FOR SALE in the Gretna, Algiers and McDonoghville Cemeteries we have newly constructed family tombs and copings ready built.

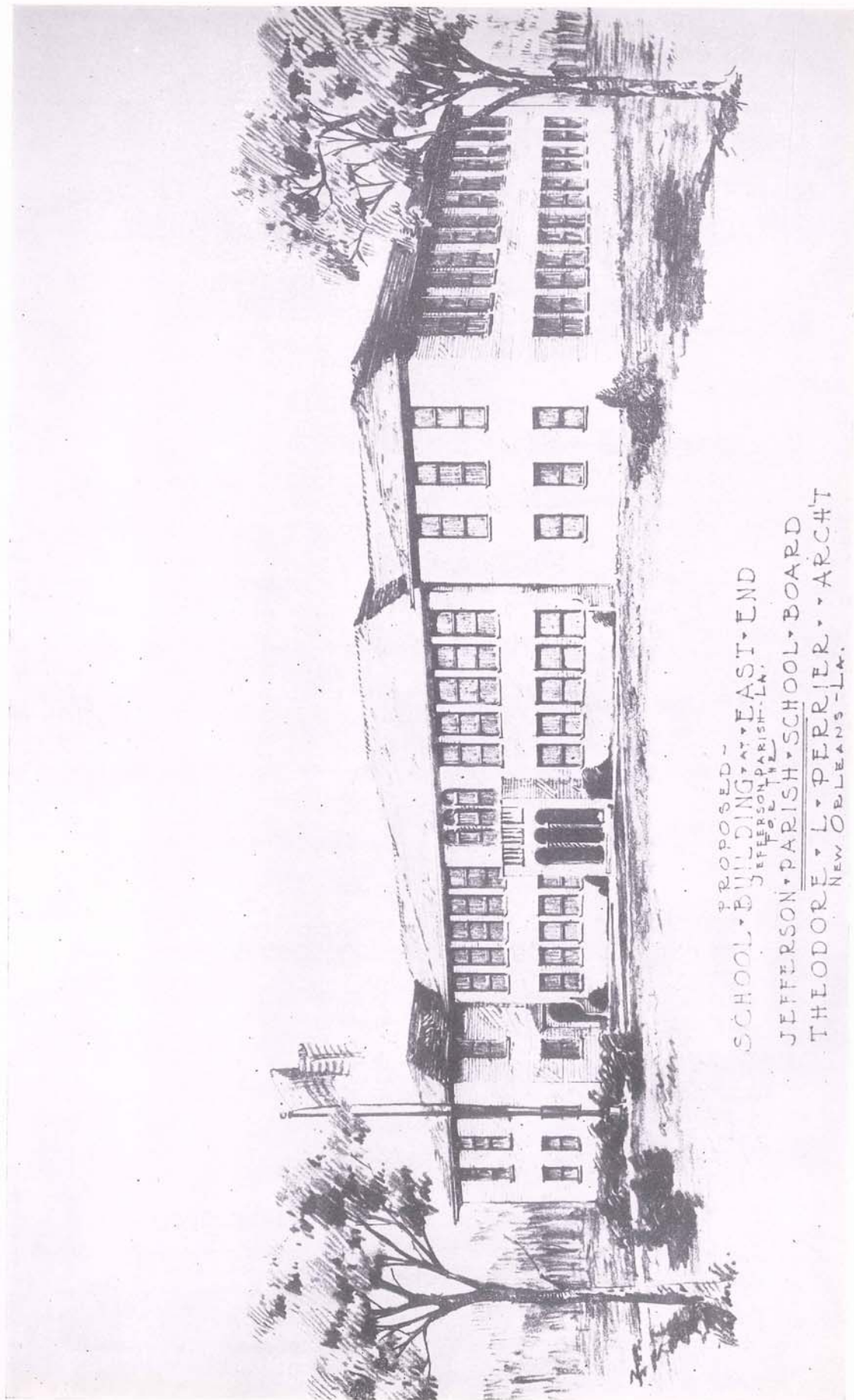
Before building or buying consult us for the best prices and the improved methods of construction.

**ACME MARBLE &  
 GRANITE COMPANY**

101 City Park Ave  
 GAlvez 3800

ALBERT L. STEWART, President

1210 Carondelet Bldg.  
 RAYmond 9997



PROPOSED  
SCHOOL BUILDING AT EAST END  
JEFFERSON PARISH, LA.  
FOR THE  
JEFFERSON PARISH SCHOOL BOARD  
THEODORE L. PERRIER, ARCHT  
NEW ORLEANS, LA.

Growing With  
**JEFFERSON PARISH**

Visit Jefferson Parish's Largest

**FOOD STORE**

**The Great Atlantic & Pacific Tea Co.**

100 Huey P. Long Ave.

Gretna, La.

**FRANK A. VON DER HAAR**

**Fruit, Vegetables, Poultry and Fish  
Service and Quality**

Phones:

Market: UPtown 6883

Residence: UPtown 2990

**JEFFERSON MARKET**

NEW ORLEANS

**GRAND ISLE**

**Louisiana's Finest Beach**



**Grand Isle Chamber of Commerce**

c/o A. D. DANZIGER, Attorney

written records are kept of the health statistics for each child, and in any case where there is a serious condition, reports are sent home to the parents.

Under the health department are two very important services, the sight-saving and opportunity classes. These classes are taught by a special teacher, and have proved most successful in aiding those children who because of some physical handicap are unable to pursue their school work in regular classes.

Such courses as speech training, debating, dramatics, etc., have been offered this year as a part of the regular curriculum. These courses are taught by specially trained and qualified teachers, specializing in this work.

Another feature has been added to the industrial arts department. The teacher of industrial arts at the Gretna High School has been appointed industrial co-ordinator. His duties in this connection are to provide part-time jobs in industry, so that our students may learn a trade along with their academic work and thus better prepare themselves for the future.

The physical education department is functioning as efficiently as in the past. Intramural sports have been completely organized in all schools, and a program of physical education is going forward. This year a series of health lectures, offered in conjunction with the health department, have been given to the school children throughout the parish by outstanding doctors and health authorities.

The athletic activities of our high schools, all of which entered teams in every major athletic event, were of the same high standard as in the past, and the crowning feature of the physical education department's program, Achievement Day, held this year on May 11 and 12, was an outstanding event.

The safety of the children in our schools has not been neglected. Every bus now used in the transportation of children to and from school is of all-steel construction, and in addition to this safeguard, our safety director has organized safety patrols to aid children in avoiding dangerous traffic hazards in the vicinity of schools. These patrols operate in every school, and are important factors in protecting the children.

The enrollment of negro students has increased to such an extent that there are now ten negro elementary schools and two negro high schools operating in the parish.

Much credit for the interest in advanced methods in education throughout Louisiana must be given to the guidance and leadership of the State Department of Education. In line with the suggestions of the State Department directors and supervisors, Jefferson Parish schools have organized extensive project work. Also, a planning committee has been set up to organize the work and to develop units for the following year.

All in all, Jefferson Parish schools are well satisfied with their progress during the year 1939, and hope that they will continue to merit the support and co-operation of the public which they earnestly strive to serve to the best of their capacities. With the generous aid and encouragement of the people of the parish, there can be no doubt that the schools will maintain their enviable position among those of our sister parishes throughout the State of Louisiana.

## ST. MARY OIL CO., INC.

Producers of Crude Oil

1416 WHITNEY BLDG.

NEW ORLEANS, LA.

### 1, 2, 3, AND 4-ROOM COTTAGES—CITY BUS TO COURT

You, too, will enjoy stopping at the best  
court in America's Most Interesting City

## DIXIE TOURIST COURT

NEW ORLEANS' ONLY SHADY, COOL COURT

From the East or West, Follow U. S. Highway 90-61 (So. Claiborne Ave.)  
to Court. We Are Just Two Miles East of New  
Huey P. Long Mississippi River Bridge

Phone	Cafe	Mail Address
CEdar 9132	Store	R. D. 2, New Orleans, La.
Member T. C. O. A.	Trailer Space	c/o Dixie Tourist Court

## NEW DELUXE COTTAGES

Approved



*Sightseeing Trips From Court*

Member  
United Motor  
Courts

*"Say It With Flowers"*

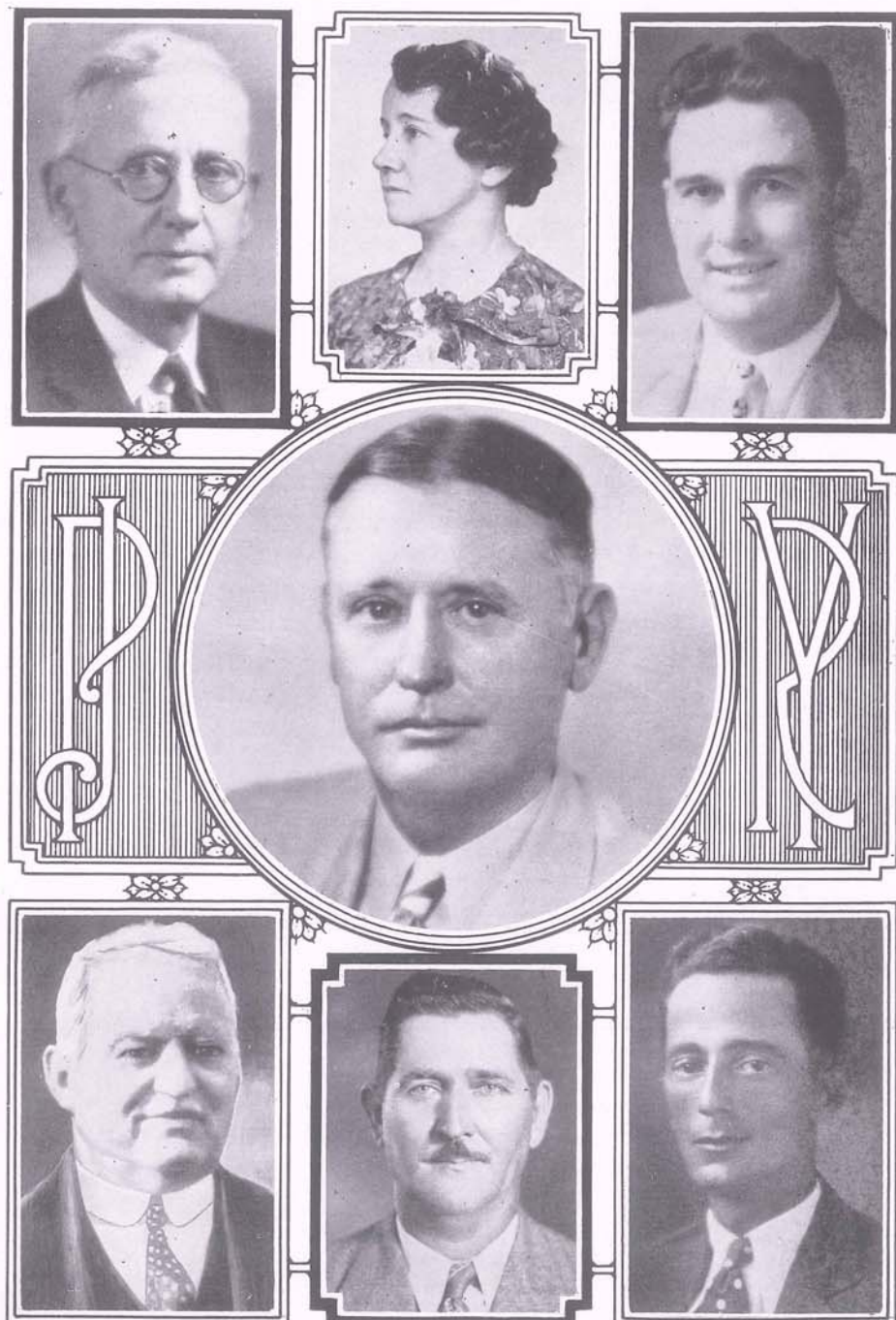
## Metairie Ridge Nursery Co., Ltd.

FLORISTS

135 CARONDELET ST.

NEW ORLEANS, LA.

*Nursery—Metairie Ridge*



Left top—J. C. Ellis, Superintendent of Schools. Top center—Mrs. A. C. Alexander, Vice-President of the School Board. Top right—Lem Higgins, Asst. Superintendent of Schools. Center—Edward M. Comiskey, President of the School Board. Lower left—Dr. A. J. K. Genella, Parish Health Officer. Lower center—Hon. Leon Dufour, Chairman Finance Committee, School Board. Lower right—Elias B. Fisher, Registrar of Voters.

## **The American Distilling Company, Inc.**

**Gretna, La.**

**PRODUCERS OF**

OLD AMERICAN Brand Straight Rye and Straight Bourbon Whiskies, 90°.  
 PIPING ROCK Fruit Flavored Gins, 80°—Orange, Lemon, Lime, Mint and Blackberry.  
 MEADWOOD Straight Bourbon Whiskey, 90°.  
 STILLBROOK Straight Rye Whiskey, 90°.  
 MONOGRAM Blended Whiskey, 90°—35% 4 Years Old, 65% Grain Neutral Spirits.  
 BRIARCLIFF Blended Whiskey, 85°—10% 4 years, 15% 3 years, 75% Grain Neutral  
 Spirits.

SUPREME Straight Rye and Straight Bourbon Whiskies, 90°.  
 OLD COLONY Distilled Gin, 90°.

## **ALTO TOURIST COURT**

**On Highway 61**

**New Orleans' Newest and Cleanest Tourist Home**

**NEAREST TOURIST COURT TO HUEY P. LONG BRIDGE**

**Give Us a Call When You Visit New Orleans**

**EUG. BAROUSSE, Mgr.**

**RATES \$1.00 AND UP**

## **ARCHIE C. STUMPF**

**DRUGGIST**

**301 HUEY P. LONG AVENUE**

**Algiers 9294**

**GRETN**

# Lafitte Oil Field

**R. C. STEWART**

**Manager, Louisiana Division, Producing Dept.  
The Texas Company**

For many years, the Lafitte section of Jefferson Parish was known only for the furs and seafood its marshes and coastal waters produced, and for the legends of the brothers Lafitte, the piratical smugglers of New Orleans, whose headquarters were here.

Then, in the latter part of 1933, geophysical crews of The Texas Company, working in this area over lands held under lease by that company, found evidence of a deep-seated structure or dome. Carrying their operations further during 1934, they finally recommended that a well be drilled on the Louisiana Land & Exploration Company's property at a point in the southeast part of Section 19 Township 17 South, Range 24 East. In November, 1934, a location was made, and operations started for the drilling of a well.

In drilling this first well, The Texas Company encountered many difficulties, not only because of the depth to which this well was sunk, but because it was necessary to construct large mat foundations, on which to place the derrick and equipment necessary for drilling.

Actual drilling on the well was begun in January, 1935, and on May of the same year, at a depth of a little over 9500 feet, oil sand (now known as St. Denis sand) was encountered, and the first well was completed with an initial production of over 1000 barrels per day.

At this time, The Texas Company developed and patented an all-steel barge on which their drilling equipment was mounted, thereby eliminating the great hazard of faulty foundations. Now, when a well is to be drilled, a canal is dug and the barges floated in and sunk to provide safe and faultless foundation.

To date, The Texas Company has completed twenty-eight producing wells, varying in depth from 8,000 to 10,200 feet. One well was drilled to a depth of 12,115 feet, but was finally completed at a lesser depth. Only one dry hole has been drilled so far, namely, School Board-Lafitte Well No. 1, located in the southeast part of Section 16 Township 17 South, Range 24 East. There are at present two wells drilling and one rig reworking one of the earlier wells drilled, for the purpose of reducing the gas-oil ratio. These ratios are kept as low as practical in order to conserve the natural energy in producing the wells.

Also located in Lafitte is The Texas Company's modern high-pressure gasoline plant, producing between 5,000 and 6,000 gallons of gasoline per day.

The present daily allowable, as set by the Conservation Commission, is 15,000 barrels. This oil is pipe-lined from the field to a tank farm at Marrero, to be shipped from that point, a Jefferson project from beginning to end.

# Sinclair Refining Company



SINCLAIR H-C GASOLINE  
SINCLAIR PENNSYLVANIA MOTOR OIL  
SINCLAIR OPALINE MOTOR OIL  
SINCLAIR (INSECTICIDE) STOCK SPRAY

## PINES TOURIST COURT

"Jefferson Parish's Newest Tourist Court"

Midway Between New Orleans and Huey P. Long Bridge  
On Highway 90-61

Modern Rooms and Apartments

City Bus to Camp

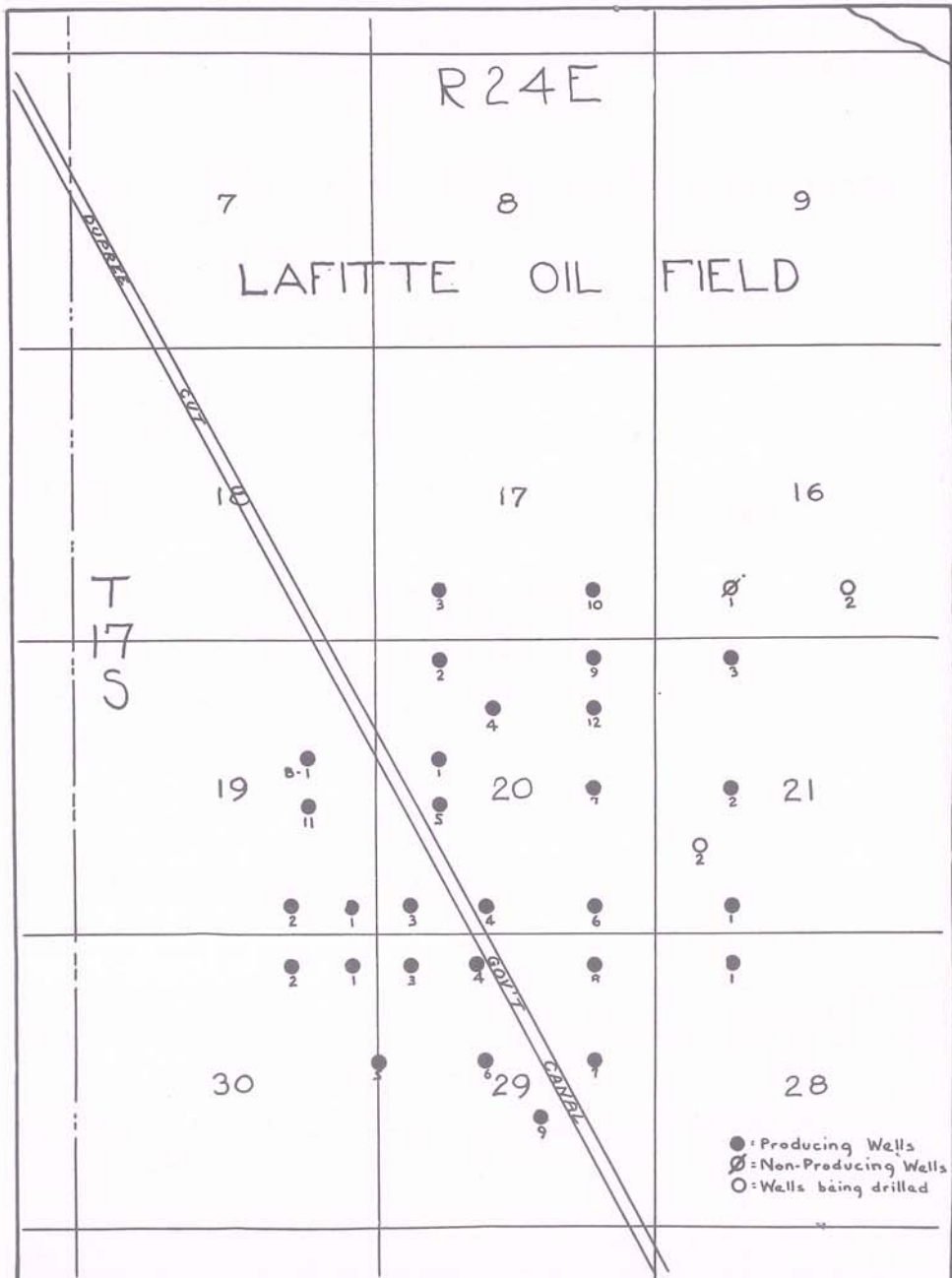
Phone CEdar 1863

"The Original METAIRIE SPECIALIST"

## JACOB L. DUNCAN REALTOR

METAIRIE RIDGE AND OTHER JEFFERSON PARISH  
SUBDIVISIONS

126 WOODLAWN AVE., FOREST HILLS  
Metairie Branch, New Orleans  
Telephone CEdar 1933



The Texas Company's Operations at Lafitte Field.

## American Iron & Machine Works Co.

— • —  
MANUFACTURERS OF OIL FIELD EQUIPMENT  
— • —

HARVEY, LOUISIANA

## STANDARD FUR CO., INC.

BEST IN FURS

Telephone MAgnolia 1504 New Orleans, La. Decatur at Iberville St.

Storage   Cleaning   Repairing   Remodeling

Muskrat Coats Shown in Article on FURS Thru Courtesy of Standard Fur Co., Inc.

MAGNOLIA  
3548

# **CRESCENT CITY ENGRAVING CO.**

420 Camp St.  
New Orleans, La.

*Chris Eichhorn  
President*

- HALFTONES
- LABELS
- VELOX PRINTS
- COLOR PLATES
- ZINC ETCHINGS
- MAT SERVICE
- SCHOOL PUBLICATIONS

# A Brief History of Jefferson Parish

## THE HISTORICAL RECORDS SURVEY<sup>1</sup>

Jefferson Parish is located in southeastern Louisiana. It extends from Lake Pontchartrain to the Gulf of Mexico, and touches the parishes of Orleans and Plaquemines on the east, and St. Charles and Lafourche on the west. The Mississippi River flows through the northern corner, dividing the parish into two sections, the left bank, between the river and the lake, and the right bank, from the river to the gulf. Jefferson was created in 1825 from the Parish of Orleans,<sup>2</sup> and named in honor of Thomas Jefferson. At that time the parish included the greater portion of present uptown New Orleans beyond Felicity Street. As the city expanded, the Jefferson line was pushed back bit by bit until today it lies approximately along Monticello Avenue and the old protection levee to the lake.

From north to south, the parish affords a striking contrast. That part on the left bank adjoining New Orleans, consisting of 28,000 acres of fertile land, is a thickly populated suburb. Here is located Metairie, with its beautiful homes and gardens; Harahan and Kenner, busy incorporated towns; while along the new four-lane highway to Baton Rouge stretches an almost

---

Sailboat on Lake Pontchartrain. The lake is the northern boundary of Jefferson Parish.

---



Drink

ROYAL CROWN



Because it's good

USE  
**Bull Dog Brand  
Fertilizers**



PACKED IN COTTON BAGS

Manufactured by

**Davison-Pick  
Fertilizers Division**

**The Davison Chemical  
Corporation**

New Orleans, La.

Office, 1421 Carondelet Bldg.

Factory, Gretna, La.

**H. T. COTTAM & CO., INC.**

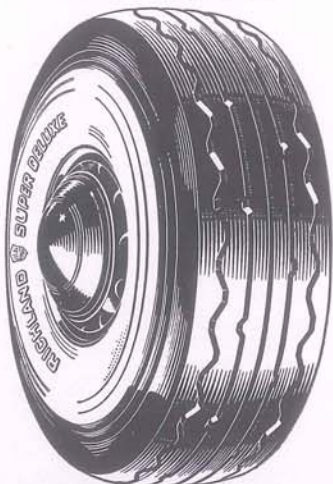
Wholesale

GROCERS and IMPORTERS

700 Tchoupitoulas Street

RAYMOND 1141

Distributors of



**TIRES AND TUBES**

**The Mothe  
Burial Benefit  
Life Insurance Co.,  
INC.**

HOME OFFICE

619 Seguin Street, Algiers, La.

Phones: ALgiers 1028-1029

GRETNA FUNERAL HOME

505 Amelia Ave.

ALGIERS FUNERAL HOME

313 Opelousas Ave.

**A Westside Company Owned  
and Operated by Westside  
People**

**By Patronizing a Home Company  
You Are Helping Build the  
Westside**

E. J. MOTHE

Official Funeral Director

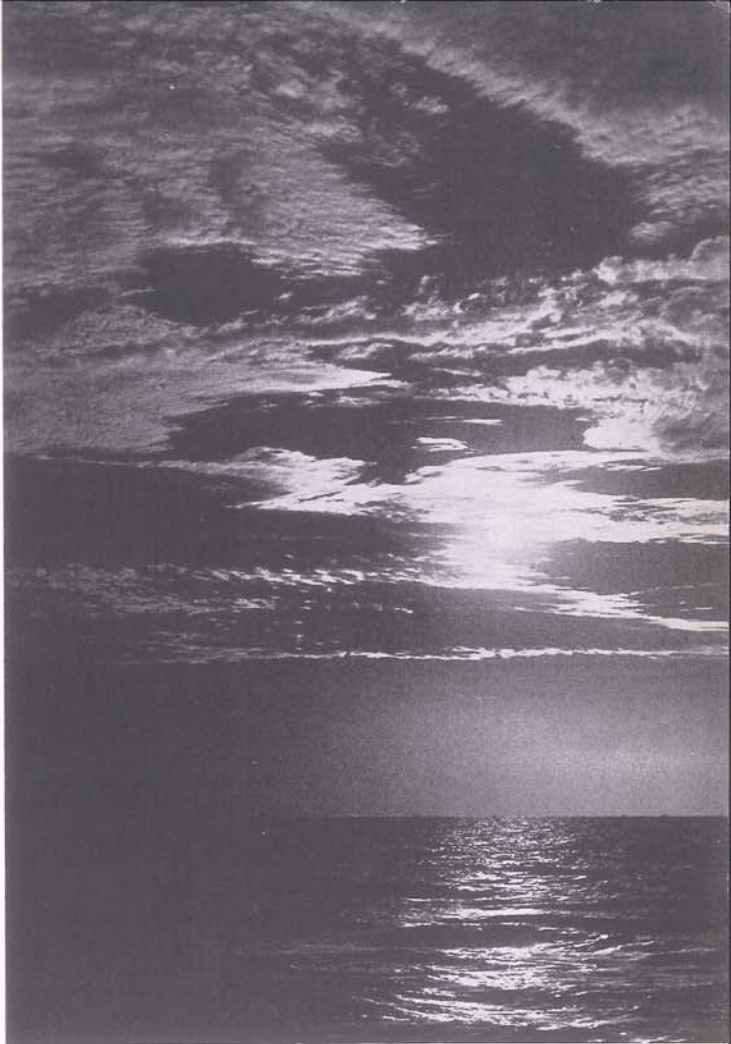
▲

---

A full moon silvers the waters of the Gulf of Mexico at Grand Isle, on the southernmost tip of Jefferson Parish.

---

▼



continuous line of farms, dairies and homes. Connecting this section with the west bank of the Mississippi is the new Huey P. Long Bridge, its lofty arches visible for many miles. This is the only trans-Mississippi bridge south of Vicksburg, although one is presently under construction near Baton Rouge. Across the river, Gretna, Marrero, Harvey and Westwego are manufacturing and shipping centers for nationally known products. From here, however, the picture changes. As the road turns southward toward the Gulf, it passes through the lovely Barataria country, with its spreading oaks and winding bayous, its busy little communities of shrimping and fishing folk. Finally, at the southern end of the parish, the long miles of coastal marshes end. Here only trappers and fishermen are found. Beyond the mainland, Grand Isle, eight miles long by one mile wide, offers fishing and surf bathing equalled in few places.

To understand Jefferson Parish as it is today it is necessary to go back nearly three hundred years to April 9, 1682. For two months, Robert Cavelier de La Salle had been struggling with the dangerous and uncharted currents of the Mississippi River, intent on one idea, to traverse the entire course of the mighty river from source to mouth. Indians, famine and sickness had pursued his little band. Now at last, on this day in April, he came to the end of his voyage, where the river merged into the Gulf, "limitless, voiceless and lonely, without a sign of life". There he erected a cross and buried a

# *Sunshine Biscuits*

ARE MADE IN NEW ORLEANS BY

## **LOOSE-WILES BISCUIT COMPANY**

1111 So. Peters Street

RAYmond 7277

New Orleans, La.



### **ORIGINAL PAGE CHAIN LINK FENCES ARE PERMANENT AND ECONOMICAL**

Fences Carried in Stock—Estimates Without Obligation—Trained Erectors  
Steelcrete Window and Door Guards

## **THE ORLEANS STEEL PRODUCTS CO., INC.**

1025 Bienville Street

RAYmond 2116-2117

G. A. McWilliams, Pres.

William Herman, Vice-Pres.

A. Guibet, Vice-Pres.

W. H. McDonogh, Sec. and Treas.

Founded 1892

Incorporated 1917

## **McWILLIAMS DREDGING COMPANY CONTRACTORS**

Operating: DIPPER DREDGES, HYDRAULIC DREDGES, CLAMSHELL  
DREDGES, DRAGLINE EXCAVATORS

Canals, Filling, Roads, Levees, Irrigation, Drainage Ditches  
Lake Michigan Bldg., Chicago RA. 3335-6 Hibernia Bldg., New Orleans

# **J. Wallace Paletou, Inc.**

## **REALTORS**

822 Perdido Street

New Orleans, Louisiana

Residential - Commercial - Farm Lands - Rent Collections

Property Management



For **QUALITY**  
And **ECONOMY**



"Unexcelled Since  
1890"

SAVE THE COUPONS

For **EXTRA FINE**  
**SUGAR**

Look for the

**BLUE BAND**



**Godchaux Sugars, Inc.**

**Murphy Iron &  
Boiler Works, Inc.**

**Sugar Machinery**

**Boilers, Tanks and Smoke  
Stacks**

All Classes of Steel Fabrication and  
General Repair Work

Cable Address: "Murphy"  
W. U. Code

**Galvez 3128**

**Broad St., Between Perdido and  
Poydras Sts.**

**New Orleans, U. S. A.**

Your Health, Comfort and Efficiency Depend Upon the Air You Breathe. Let Us Air Condition and Cool Your Home or Office.

**AS DEPENDABLE  
AS ITS NAME**

**American Heating  
& Plumbing  
Co., Inc.**

**829 BARONNE STREET  
New Orleans**

**Plumbing, Heating, Sprinkler  
Systems  
Cooling Systems, Refrigeration**

**Williams  
OIL-O-MATIC  
Heating**

of representation and taxation until 1845.<sup>6</sup> Two of these new parishes, St. Bernard and Plaquemines, were taken from Orleans. All of the remaining territory of Orleans County became Orleans Parish.<sup>7</sup> By a provision of the Constitution of 1812, the City of New Orleans, extending from the Canal des Pecheurs to the Nuns' Plantation (Felicity Street), constituted the second senatorial district. The remainder of Orleans Parish, extending from the Nuns' Plantation to St. Charles Parish and Lake Pontchartrain on the left bank of the Mississippi River, and on the right bank from the river to the Gulf of Mexico, formed the third senatorial district.<sup>8</sup> It was this part of Orleans Parish which in 1825 became Jefferson Parish.

#### EARLY SETTLEMENTS

Many of the present population of the parish are descendants of the French colonists who came to Louisiana during the eighteenth century. The earliest land grants in the section go back to 1719. In that year the Western Company, to whom King Louis XIV had leased the province for purposes of trade and colonization, granted to Bienville an immense tract of land above New Orleans, from Bienville Street to the "Tchoupitoulas", and another tract on the opposite side of the river. Following the royal decree prohibiting the officers of the company from holding land other than "vegetable gardens", Bienville let out in concessions all of his land except a "garden" on the right bank, and one between Bienville and the present Felicity streets. These concessions and subsequent sales of property to settlers formed the basis of the plantations which grew up along the river.<sup>9</sup>

Twelve miles above New Orleans was the tract known as the Tchoupitoulas Plantation, the site of a Tchoupitoulas Indian village. The first grant of this land was to Nicholas de Boisclair before 1743. Parts of it passed by sale to Pierre Picquery, Jean Arnault, Bernard Marigny, and in 1808 was purchased by Joseph Soniat du Fossat. Today there are about one hundred and sixteen acres still in the possession of Meloncy C. Soniat. The rest of the plantation is occupied by the Harahan School, the Sugar Planters Association, two dairies, the Colonial Realty Company, and the Colonial Golf and Country Club. Parts have been subdivided into Markham Heights, Soniat Place, Roseland Park, Riverside Park and River Front Farms.<sup>10</sup>

The old colonial home of the Soniat family was built over a hundred years ago by Joseph Soniat du Fossat. The house was situated in the middle of the plantation, and about six hundred feet from the river. It was a two-story brick building with large galleries entirely surrounding the house, these galleries being supported by large brick pillars. The bricks used in the construction of the house were made on the place, for du Fossat had his own brick-yard. The timber and the lumber were cut from his cypress swamp; the wooden rafters and beams were hewn on the place and are held together by wooden pegs. Today, this building still stands, and is the home of the Colonial Golf and Country Club. The club bought two hundred acres of the plantation and remodeled the mansion by adding a wing at each end of the colonnaded veranda and installing locker rooms and a grill.<sup>11</sup>

#### DEVELOPMENT OF THE FAUBOURGS

Following the line of the river, these plantations developed first into faubourgs (suburbs), usually taking the name of the former owner,<sup>12</sup> then into a series of incorporated towns, each destined to be absorbed by the growing

- For Greatest Values in  
Men's and Boys' Clothing

## Beekman's

300 St. Charles St.

New Orleans, La.

- 100% Satisfaction Guaranteed

STOP AT

## BLEAKLEY'S

New Orleans-Baton Rouge Airline

HALF-WAY STOP

## Woodward, Wight & Co., Ltd.

THE LARGEST GENERAL SUPPLY HOUSE SOUTH SINCE 1867

451 HOWARD AVE.

RAYmond 1231

NEW ORLEANS

INDUSTRIAL SITES

On River opposite New Orleans

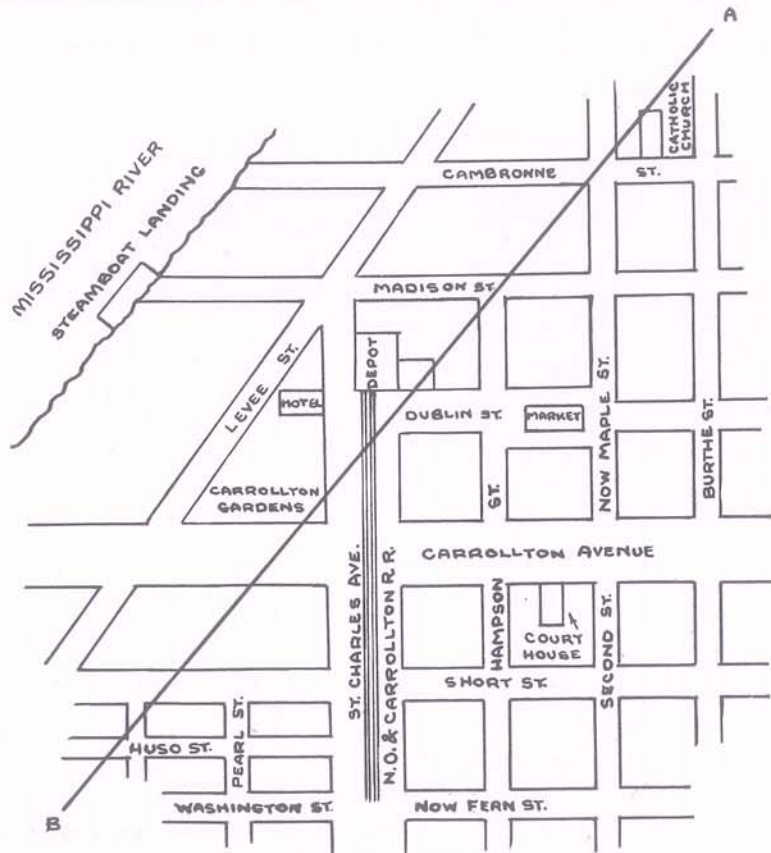
FOR SALE OR RENT

Apply

## BROOKLYN LAND COMPANY

819 Gravier Street

Telephone RAYmond 8325



NOTE.—A-B LINE OF PRESENT LEVEE.

Plat Taken From Map of Carrollton Made and Published by William H. Williams, Surveyor, in 1871.

City of New Orleans. By 1810 so many people desired homes in this section that the large land owners decided to divide their holdings into lots which could be sold to new settlers.

The first to develop was the Faubourg Nuns, located approximately between the present Felicity and St. Andrew Streets. This property was bought by the Ursuline Nuns in 1770 and 1780 from the Livaudais estate, and used by them as a farm until its subdivision in 1810.<sup>13</sup> Above the Nuns' Plantation, and extending to the present First Street, was the Faubourg Lafayette, known as the Wiltz tract. This tract was divided into lots and opened for sale in 1813, but no specific name was assigned to the faubourg.<sup>14</sup> In 1825 the Marquis de la Fayette visited New Orleans and made such a favorable impression that the new faubourg was called in his honor Faubourg Lafayette.<sup>15</sup>

The tide of expansion swept on past the Faubourg Lafayette. Just above lay the extensive plantation of the Livaudais family. The title to this plantation originated with Francois de Livaudais in 1736. When his grandson Jacques married Marie Celeste Marigny, the combined holdings comprised practically all of what is now "uptown" New Orleans. They were building a new mansion on their sugar plantation in the section now bounded by

**SUREKOTE**  
**PAINTS - VARNISHES - ENAMELS**  
 Formulated especially for our Southern  
 climate to dry satisfactorily, last long,  
 and look well.



Manufactured in New Orleans in one of the  
 largest and best equipped paint and var-  
 nish factories in the South.

**MARINE PAINT &  
 VARNISH CO., Inc.**

A Louisiana Corporation  
 Fig & Dante Sts. New Orleans, La.



**Cracker Factory  
 LIMITED**

Manufacturers of  
**THE BEST SODA CRACKER  
 ON EARTH**

also

**QUALITY CAKES**



**615 Tchoupitoulas Street  
 New Orleans**

Civil and Criminal  
 Investigations

**Forrest C. Pendleton**

President—General Manager

**National Corporation  
 Service, Inc., of La.**

**327 WHITNEY BUILDING**

**RAYmond 6573-6680**

Representatives in All  
 Principal Cities

**Stafford,  
 Derbes &  
 Roy, Inc.**

**310 CAMP STREET**



Real Estate  
 Acreage  
 Lake Frontage  
 Air Line Highway

Washington, Tchoupitoulas, Sixth streets and the river, when the flood of 1816 inundated the section. The house was never completed, and remained for many years a place of mystery, pointed out as the "haunted house". The plantation, however, was greatly enhanced in value by a deposit of rich alluvial soil which raised the land several feet. In 1832 Mrs. Livaudais sold her land as far as Harmony Street to a group of speculators, who called their new suburb Faubourg Livaudais. About 1840 wealthy Americans began moving into the faubourg, where they built handsome homes surrounded by spacious gardens. This marked the beginning of a residential section which even today is famous as the "Garden District".<sup>16</sup>

#### CITY OF LAFAYETTE

On April 1, 1833, the faubourgs Nuns, Lafayette and Livaudais were incorporated as the City of Lafayette.<sup>17</sup> Within ten years the government had progressed from a board and president, controlled by the police jury, to a council and mayor.<sup>18</sup> In 1844 the faubourg Delassize was annexed to Lafayette, and in 1848 the limits of the city were extended to the present Toledano Street.<sup>19</sup> But New Orleans also was expanding in the same direction, and in 1847, some of the lower portion of Lafayette was added to the city. Legally, however, the boundaries between Jefferson and Orleans were not changed, and the parts annexed were allowed to remain in Jefferson. Even in 1852, when the City of Lafayette was formally annexed to New Orleans, it continued to be the parish seat of Jefferson, until the constitution of 1852 extended the limits of the Parish of Orleans so as to include the City of Lafayette. The constitution also provided that until a new apportionment should be made according to the new census Lafayette should vote for senators as from the parish of Orleans, and should elect two out of the three representatives apportioned to Jefferson.<sup>20</sup>

In 1850, Lafayette had a population of 14,190, of which about thirteen per cent were colored. The following year the city made two appropriations which greatly influenced the future development of the entire section; one, a warrant for \$166.70 as Lafayette's proportion of a proposed survey for the New Orleans and Jackson Railroad, which has since become the southern end of the Illinois Central Lines; the other, a subscription of \$200 for the Algiers and Opelousas Railroad, which in turn became the New Orleans end of the Southern Pacific.<sup>21</sup>

The city proper, being a river town, was located near the water front, where the German and Irish settlers were in the majority. Even today that part of New Orleans between Thalia Street and Seventh Street, and from Magazine Street to the river, is locally called the "Irish Channel".

#### CITY OF JEFFERSON

Immediately beyond the City of Lafayette was situated the "Borough of Freeport", which was incorporated May 27, 1846. Its boundary ran through the area which at present lies between State and Webster Streets. In 1847 the line was extended to Joseph Street, the lower limits of the settlement of Hurtsville. On March 9, 1850, the "Borough of Freeport" was absorbed by the incorporation of the City of Jefferson, composing the following faubourgs: Plaisance, Delachaise, St. Joseph, East and West Bouigny.<sup>22</sup> Twenty years later, on March 16, 1870, New Orleans annexed the City of Jefferson.<sup>23</sup>

EUG. J. BENDER, President

ROBERT ANDERSON, Salesman

**PETER P. ROWAN CO., Ltd.****JOBBERS**

Wagon Materials, Auto Top Supplies, Mouldings, Iron and Steel Products, Hardware  
Specialties, Pipe Fittings, Galvanized Pipe, Lawn Mowers, Farm  
Supplies, Electrical Supplies

**RAYmond 4346****908 to 920 Perdido St.****New Orleans****JACK J. H. KESSELS****ARCHITECT****Humble Oil & Refining Co.****2307 AMERICAN BANK BLDG.****NEW ORLEANS****BELL DISTRIBUTING COMPANY***Distributor of***MILLS AND JENNINGS COIN MACHINES****825 Poydras St.****New Orleans, La.****Phone RAYmond 4408**

Hurstville and the subdivisions Bloomingdale and Burtheville formed the greater portion of the plantation formerly owned by Jean Etienne de Bore, who in 1794 was the first person to succeed in crystallizing sugar in Louisiana. Audubon Park contains about two arpents of the land originally owned by de Bore. The remainder of the park was purchased by the City of New Orleans in 1871 from the Foucher estate. The rear of the Foucher property from St. Charles Avenue back is now occupied by Loyola University, Tulane University and Audubon Place.<sup>24</sup>

#### CITY OF CARROLLTON

The most important of the towns above New Orleans was Carrollton. Before the Civil War it was regarded as a summer resort by the people of New Orleans. Its fine hotel and garden were situated on the river side of the New Orleans and Carrollton Railroad Company's station, and were bounded by St. Charles and Carrollton Avenues, Madison and Levee Streets. The depot surpassed any of those in the City of New Orleans. The hotel, depot and garden have long since disappeared owing to the encroachments of the river and the Public Belt Railroad. Incidentally, Carrollton is the only one of the early towns of Jefferson Parish which, as a part of New Orleans, has retained its former name.<sup>25</sup>

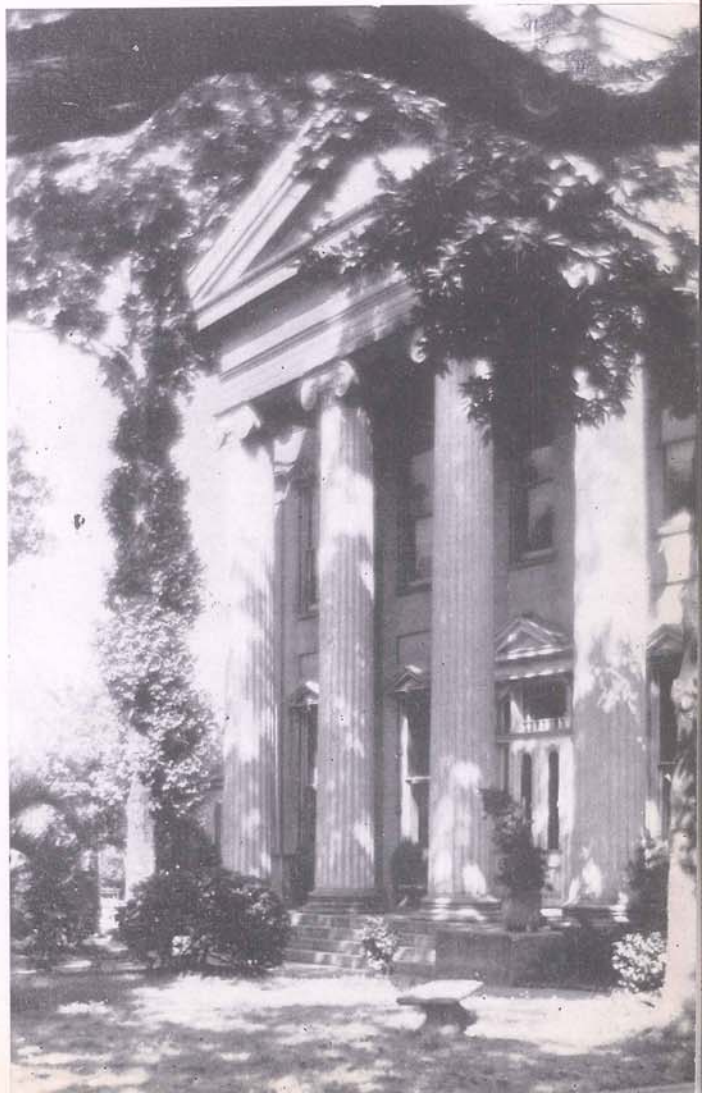
▲

---

This school, McDonogh No. 23, on Carrollton Ave., was formerly the Jefferson Parish Court House, when the City of Carrollton was part of this parish.

---

▼



BRUNO PRAGER, President—HERMAN PRAGER, Vice-Pres.—JULIUS PRAGER, Sec.-Treas.

## PRAGER, INC.

Owners NOVELTY MACHINE WKS.

472 Howard Ave.

RAYmond 6448-9273

### DAY AND NIGHT SERVICE

Manufacturers of Cut Gears and Sprockets—Special Machines

Built to Order

DISTRIBUTOR FOR WHITNEY CHAIN

## A. BALDWIN & CO., INC.

Wholesale Hardware

Distributors of

P. & F. CORBIN, FINE BUILDERS' HARDWARE

130 Camp Street

New Orleans

## Schwartz Supply Company, Inc.

BUILDING MATERIALS AND SPECIALTIES

Washington Sand & Gravel Co., Inc.

PRODUCERS AND DISTRIBUTORS

OTTO SCHWARTZ, President

415 St. Patrick St.

New Orleans

GAvez 1123

**DRINK...**

*Coca-Cola*

EVERY BOTTLE STERILIZED

The land on which Carrollton now stands was known as the Macarty sugar plantation. The previous history of the tract is so complicated and indefinite that historians disagree on many points of the succession. It was part of a grant made to Bienville in 1719, and was transferred by him to Nicholas Chauvin de la Freniere "at the quit-rent of six livres of rent per arpent, as also two capons and two days labor for each of the said arpents".<sup>26</sup> At the father's death, the plantation apparently passed to his son, Nicholas de la Freniere, Jr. Nicholas Chauvin de la Freniere was executed by O'Reilly for his part in the rebellion of 1768. The next owner was Louis Cesaire LeBreton, son-in-law of the elder la Freniere. Whether he inherited the property, or as another story goes, had received it in 1757 as a grant from the French government, appears unknown. It is equally uncertain just how it came into the Macarty family. According to one source, LeBreton sold it to Barthelemy Macarty on January 21, 1781. Another version claims that it passed to his son, and upon his murder, it became the property of Barthelemy Macarty, the tutor of the LeBreton children. The title to the lands, however, as confirmed by Congress in 1823, was based on a Spanish grant to Jean Baptiste Macarty, son of Barthelemy Macarty, in 1795.<sup>27</sup>

The plantation, consisting of thirty-two arpents on the Mississippi River, and extending between the present limits of Upperline and Lowerline Streets, was in cultivation in 1808 by the Macarty family as a sugar plantation. In 1831 the entire tract was sold by the heirs to the New Orleans Canal and Banking Company, and Laurent Millaudon, John Slidell and Samuel Kohn. These parties, acting as an association, in 1833 employed Charles Zimple, a surveyor, to lay the plantation out in lots and squares. They named the embryo town after General William Carroll, who, with a large force of Tennessee militia, enroute to the Battle of New Orleans, had encamped in 1814 on the plantation. The town was incorporated on March 10, 1845, and became the City of Carrollton in 1850.<sup>28</sup> The city extended its limits in 1872 to take in all the territory between Lowerline Street and Labarre Road, in Jefferson Parish.<sup>30</sup>

The first house in Carrollton was built by Samuel Short in 1834 or 1835. The first brick store was built in 1843 by Mr. Christian Winters, a German. The first newspaper, THE CARROLLTON STAR, was published in 1849 by P. Souliar. This paper was issued for only a short time and went out of existence, but was re-issued in 1851.<sup>31</sup> In 1863 Mr. Souliar started publication of the CARROLLTON TIMES, which was published semi-weekly until 1868, when it was made a weekly. About 1871 or 1872 he ceased publication of the TIMES, but in 1873 issued THE CARROLLTON SENTINEL. On November 5, 1873, it was made the official journal of the City of Carrollton by the mayor and the city council. When Carrollton was added to New Orleans the offices of the paper were moved to Gretna and the name became THE JEFFERSON SENTINEL. The paper was usually non-partisan, but in the campaign of 1876, when Louisiana became the center of Congressional investigation, THE JEFFERSON SENTINEL strongly advocated Hayes and Wheeler in the national political field, and backed H. C. Warmoth for the Republican nomination for the governor of Louisiana.<sup>32</sup>

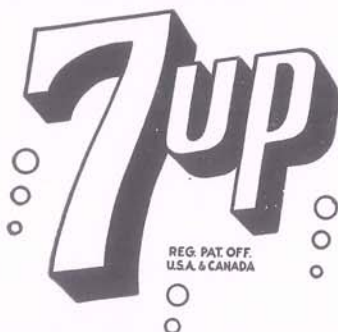
The New Orleans and Carrollton Railroad was one of the first street railroads constructed in the country, preceded in the South only by the

## ROUSSEL'S RESTAURANT

New Orleans-Baton Rouge Airline Highway

LAPLACE, LOUISIANA

FRESH UP  
WITH



YOU  
LIKE  
IT

IT  
LIKES  
YOU

## Muller Furniture Manufacturing Company

200 NORTH DERBIGNY STREET

New Orleans, Louisiana

WHOLESALE ONLY

Over 50 Years in Business

## COIN OPERATED MACHINES

Operated—Bought—Sold

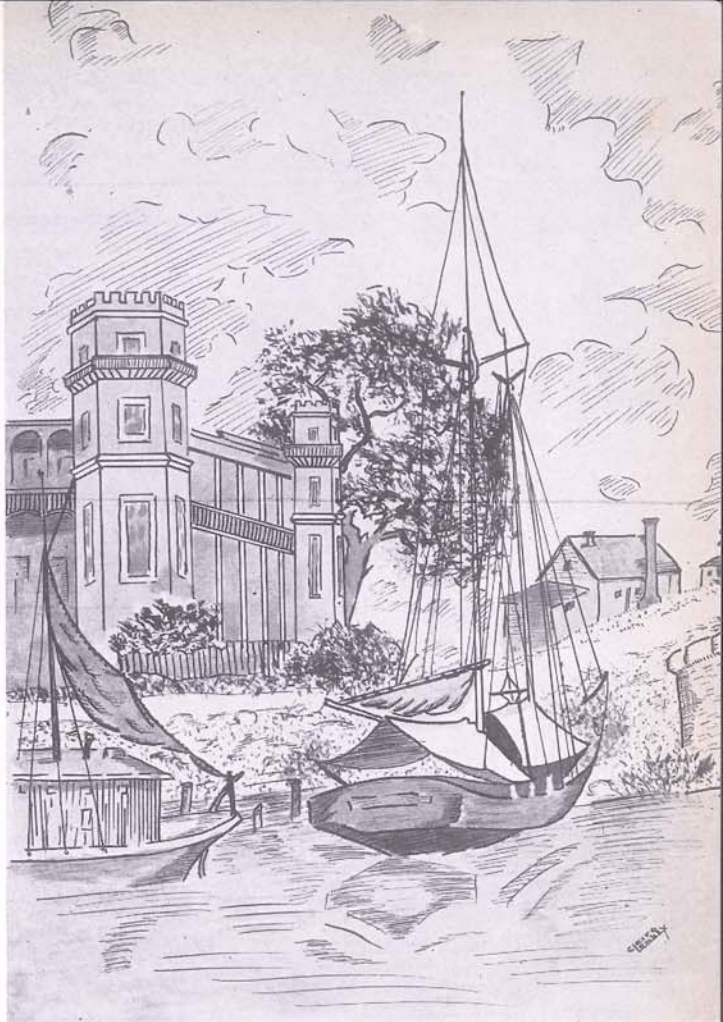
## DIXIE SALES, INC.

(Joe Leopold)

RAYmond 5884

1168 Camp St., N. O.

Harvey's Castle which served  
as the courthouse from March 26,  
1874 to May 7, 1884.

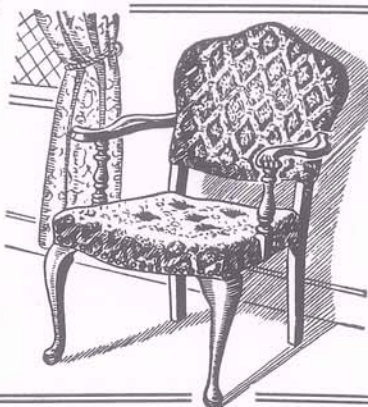


Pontchartrain Railroad. The railroad was chartered in 1833 and had the privilege of extending to Baton Rouge.<sup>33</sup> The line began at Lee Circle, then called Tivoli Circle, and ran out Noyades Street (now St. Charles Avenue), to First Street in Carrollton. Along the route were small railroad stations: City of Lafayette at Jackson Avenue, Jefferson City at Louisiana Avenue, Boulogny at Napoleon Avenue, Burtheville at Henry Clay Avenue and Greenville at Broadway. The City of Carrollton also had another railroad, called the Jefferson and Lake Pontchartrain Railroad Company, which was incorporated in 1840, by an act of the Legislature. This railroad operated only in Jefferson Parish, from Carrollton to Lake Pontchartrain; it ran along Levee Street to Protection Levee, thence to Lake Pontchartrain in the neighborhood of Buck Town (now East End), where the company had its wharves. There the steamers from across the lake and even those from Mobile would dock. This road was finally absorbed by the Carrollton Railroad.<sup>34</sup>

The rapid growth of New Orleans made the annexation of Carrollton almost inevitable. When the bill was first introduced into the legislature in January, 1874, numerous protests came from the citizens, who feared that property would decrease in value, assessments would increase, and that depreciated Carrollton bonds would be used for speculation. Gradually the opposition died. THE CARROLLTON SENTINEL, which led the fight against annexation, changed sides on March 21, 1874 and came out strongly in favor of

## Novelty Woodworking Shop

Antiques Reproduced  
Furniture Repairing  
Refinishing Upholstering  
627 CHARTRES ST.  
Gus Hoffman, Mgr. MAg. 1221



## CHAS. EBLE, FLORIST

Established Over 50 Years

152 Baronne St.

Pere Marquette Bldg.

Phone MAin 1175—MAin 1223  
Night UPTown 7446—CEdar 1261

*Nurseries—Arnault Road—Jefferson Parish*

## WHITNEY NATIONAL BANK

OF NEW ORLEANS



Total Resources More Than \$125,000,000

## Blue Horseshoe Tourist Court

ALL MODERN

500 Feet Above Protection Levee

Raised Cabins, Garages Below

Mills and Litoff

R. Mullen, Manager

it. On March 26, the whole city delegation from New Orleans rode up to the Carrollton City Hall, where they received from Mr. Brice, ex-mayor, the archives and the property of the city. When Carrollton was annexed to New Orleans, the upper limits were dropped back to Monticello Street, where they remain today. Today, Carrollton is one of the most beautiful sections of New Orleans.<sup>35</sup>

### POLICE JURY

When Jefferson was created in 1825, twelve commissioners were appointed to divide the parish into twelve districts. These commissioners were Lucien LaBranche, La. Dussau, Jean Baptiste Le Breton, J. Holliday, F. B. de Labarre, L. Volant Labarre, Francois Dorville, D. Villars, L. Dussau de Lacroix, Joseph Verloin and Felix Delery.<sup>36</sup> On January 30, 1834, an act was approved to organize and define the authority, duties and functions of the Police Jury of the Parish of Jefferson, and "that the Police Jury of the Parish of Jefferson shall be constituted and composed of not less than eight, nor more than twelve members".<sup>37</sup> In 1938, the City of Lafayette was denied representation on the police jury, and the authority of the police jury could no longer be exercised within its limits. The president and board of council of Lafayette were empowered to exercise within the limits of the city all the powers heretofore vested in the police jury, in addition to the authority already granted.<sup>38</sup> As a consequence of this act, the Police Jury of Jefferson divided the parish into ten wards, each one of which was to elect one member to the jury in accordance with existing laws.<sup>39</sup>

By an act of March 7, 1856, each village in the parish was authorized to elect three commissioners of public works to act within the respective limits of each village. These commissioners were to make annual statements to the police jury. In this same year the police jury was delegated to appoint a parish committee, "the basis of representation to be in the proportion of the state taxes assessed in the respective limits of each corporation. Each corporation entitled to at least one member in said committee." The duty of this committee was to determine and fix the pro rata of contribution of each corporation towards the expenditures which by law bear upon the whole parish, and to examine all bills or claims set up against the parish and report upon them to the several councils and police jury.<sup>40</sup> In 1857 the police jury was authorized to open roads through private property, but this act was repealed the following year.<sup>41</sup>

In 1858, because of differences which developed within the police jury, two police jury districts were created for the parish, divided as follows: "All that portion . . . lying on the right bank of the river Mississippi shall constitute one police jury district, to be known under the name and style of 'Police Jury of Jefferson, Right Bank' . . . all that portion of the parish . . . situated on the left bank of the river Mississippi, with the exception of the two corporations known as the 'City of Jefferson' and 'Town of Carrollton', shall form and constitute another police jury district, to be known by the name and style of 'Police Jury of Jefferson, Left Bank'."<sup>42</sup>

## International Harvester Company



MOTOR TRUCKS

42 MODELS

142 WHEEL BASES

1601 Poydras St. RAYmond 0395 501 N. Alexander St. GAlvez 2181  
NEW ORLEANS

TRACTORS

FARM MACHINES

DAIRY EQUIPMENT

## PONS & HOYT

### PILE DRIVING CONTRACTORS

### ALSO EQUIPMENT FOR RENT



GAlvez 4722

7106 Milne St.

New Orleans, La.

## Gulf Coast Oil Co., Inc.

Operating in Louisiana, Mississippi and Alabama

WHOLESALE AND RETAIL

Featuring Super Gulf Coast 72-Octane  
Gasoline

Main Office 3331 St. Charles Ave.

New Orleans

## BRONSON & SCRANTON, INC.

INVESTMENT SECURITIES

411 Carondelet Building

New Orleans, Louisiana

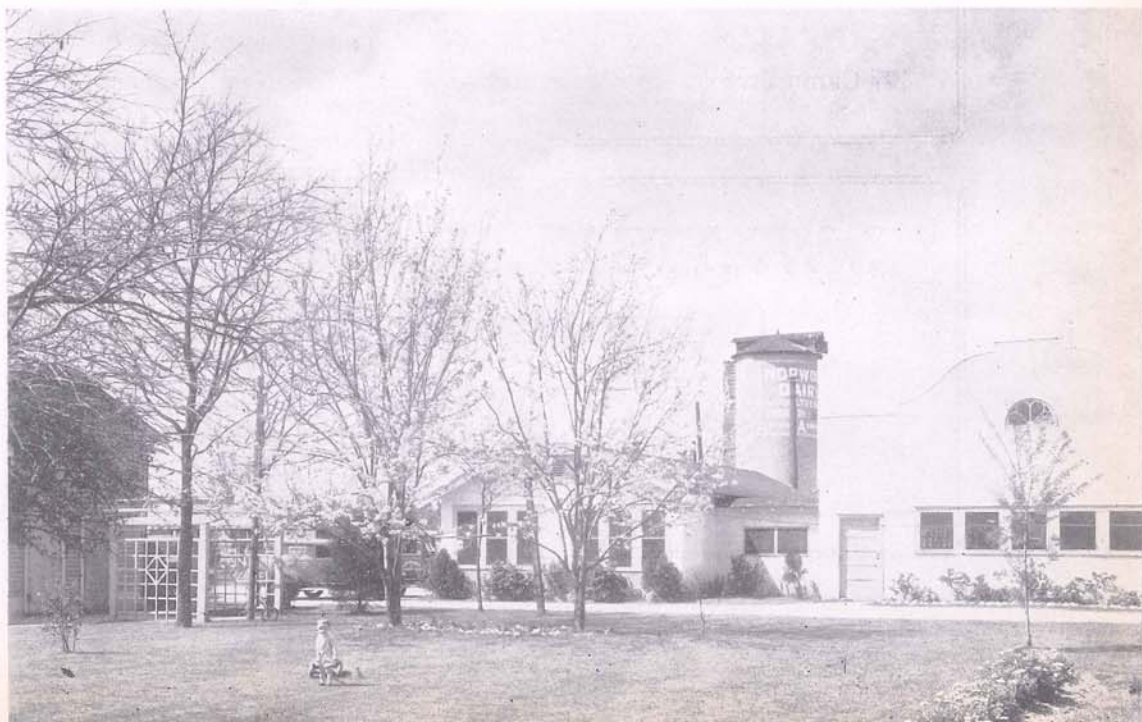
Telephone: RAYmond 2908

Teletype: N. O. 460

In 1859 the police jury, left bank, was authorized to borrow money for the construction of shell roads, and to issue bonds therefor.<sup>43</sup> The following year the police jury, left bank, was authorized to divide the parish, left bank, into school districts and to appoint school directors for the same, and to make regulations concerning schools.<sup>44</sup> On December 3, 1860, the police jury, right bank, "in view of the present political convulsion agitating the country," appropriated the sum of \$1,000 for the use of the military company known as the "Jefferson Rangers". An amendment was also passed giving \$500 to each infantry or artillery company that might be organized in the parish. On the same day Captain J. G. Dreux, commander of the "Jefferson Rifles", left bank, asked for the support of the different municipal corporations, and permission to use the courthouse as an armory.<sup>45</sup> In October, 1861, the police jury subscribed \$4,000 to aid in the construction of a fort at Little Temple (on Boutte Island), to protect the lower Barataria region, and cut off all communications with the blockading squadrons through these outlets.<sup>46</sup> In 1861, the police jury, left bank, was given the power to have delinquent taxes recorded as a lien and privilege on the property of the delinquent. They were also authorized to pass laws regulating improvements in the villages of the left bank.<sup>47</sup>

During Reconstruction the power of the police jury was superseded by that of the Metropolitan Police, which in 1868 placed the parish in the power of five commissioners, three of them negroes. During their regime of ten years they held undisputed control over the police jury and over the finances of the parish.<sup>48</sup> In 1877, following the defeat of Governor Kellogg and the

Norwood Dairy, in Marrero, one of Jefferson's model dairy farms.



## Fairbanks-Morse Products

Fill the Needs of the Nations

Diesels - Motors Pumps - Scales - Farm Machinery

Air Conditioning - Home Appliances

## COLONIAL GOLF & COUNTRY CLUB

HARAHAN, LA.

J. A. JARRATT,  
President

ARTHUR G. HILL,  
General Manager

## A. W. Hyatt Stationery Mfg. Co., Ltd.

*Printers—Stationers*

*Office Supplies*

*Lithographers*

—•—

*Loose Leaf Ledgers—Blank Book Makers*

407 Camp Street

New Orleans, La.

## J. WATTS KEARNY & SONS

BUILDING MATERIALS

512-526 SOUTH PETERS STREET

RAYMOND 5244

NEW ORLEANS

installation of Francis Nichols as governor, the Metropolitan Police was abolished by the legislature, and the Jefferson Parish Police Jury resumed control of its own affairs.<sup>49</sup> One of the first acts of the restored parish government was to oust the officials of the Metropolitan Police and to repudiate the warrants issued by them against the police jury. In October, 1879, a report in the minutes of the police jury declared the claim of one L. Roche, for the sum of \$712.00, invalid, and "no longer an obligation against the parish." A month later the police jury drew money from "the fund known as the Metropolitan Police Fund" to defray expenses of the sheriff and to run the district term of court.<sup>50</sup>

The police juries of the state, with the exception of those of Jefferson and Orleans, were reorganized in 1871, and the governor authorized to appoint, with the advice and consent of the senate, five police jurors to hold office until the election of 1872, at which time five members were to be elected in each parish, for a term of two years.<sup>51</sup> Two years later this act was amended and made applicable to Jefferson Parish, but the two police juries were to remain as set up by previous legislation.<sup>52</sup> In 1876 an act was passed empowering the police jury, right bank, to issue interest bearing bonds in lieu of and in liquidation of outstanding liabilities.<sup>53</sup>

In 1884 the legislature abolished the police juries, right and left bank, and consolidated the parish under one parochial government, styled "The Police Jury of the Parish of Jefferson". The parish was divided, by this act, into nine police jury wards.<sup>54</sup> Another act of 1884 repealed all acts creating commissions of public works and other offices of villages and unincorporated towns. Villages and unincorporated towns were to return to the control of the parish.<sup>55</sup> The same legislation which provided for the consolidation of the parochial government of Jefferson also empowered the governor to appoint an additional juror for each ward with a population of 5,000 inhabitants, and one more for each additional 5,000 inhabitants or part thereof in excess of 2,500. The additional jurors were to be selected from the registered voters of the ward.<sup>56</sup> Under the authority of acts similar to those of 1880 and 1882 the governor continued to appoint the successors to the police jury until 1896.<sup>57</sup> Control over local affairs was made possible by an act of 1894 which provided that the election of police jurors be resumed in all the parishes, except New Orleans, at the general election to be held in April, 1896, and at each general election thereafter, i. e., every four years.<sup>58</sup>

Since 1908, Jefferson and other parishes with a population of less than 50,000 have been entitled to elect an additional police juror in those wards where there are more than 5,000 inhabitants, and one more for each additional 5,000 or part thereof in excess of 2,500 inhabitants. The provisions of this act entitle Wards Three and Eight to two police jurors each, and Ward Four to four, making a total of fourteen police jurors for the nine wards of the parish.<sup>59</sup> In the last decade the police jury has been permitted to advertise its resources and other advantages by publication and radio.<sup>60</sup>

## PONTCHARTRAIN LUMBER CO., Inc.

Office, Plant and Yard

Shrewsbury Road and I. C. Crossing

RED CYPRESS AND YELLOW PINE  
MILLWORK

Paint and Building Materials

P. O. Box 47

METAIRIE, LA.

CEdar 1224

## International Lubricant Corporation

MANUFACTURERS OF THE HIGHEST QUALITY

Automotive and Industrial Lubricants

OFFER

International and Friction-Free  
Motor Oils

IN SEALED CANS

GUARANTEED LUBRICANTS New Orleans, U. S. A.



## Pullman Standard Car Manufacturing Co.

NEW ORLEANS CAR WHEEL PLANT

Manufacturers of Chilled Tread Wheels for Freight, Street Car  
and Industrial Service

Post Office Address, P. O. Box 4086, Station F

New Orleans

## THE FREIBERG MAHOGANY CO.

MANUFACTURERS AND IMPORTERS

OF

MAHOGANY LUMBER AND VENEERS

JEFFERSON PARISH



#### OFFICIALS OF THE TOWN OF KENNER

Reading from left to right, Standing: Joseph Viola, Alderman; Pierre Larroux, Alderman; Frank Peronne, Alderman; Martin Clancy, Alderman; V. J. Carona, Marshal, and John Maggiore, Alderman.

Seated: Miss Philomene Paasch, Secty.-Treas.; V. D'Gerolamo, Mayor, and Miss Marie Neidhardt, Tax Collector.

At the time Jefferson Parish was established, the candidate for membership to the police jury was required to be a respectable inhabitant, and a freeholder in the parish.<sup>61</sup> In 1829, candidates for this office were required to have the same qualifications as members of the State House of Representatives.<sup>62</sup> Since 1894, candidates must, in addition to the above, be able to read and write, and own in his own right, or his wife own in her own right, property of an assessed value of at least \$250 in the parish.<sup>63</sup> This assessed value must be on the assessment roll at the time of the general election or the candidate is not eligible.<sup>64</sup>

#### PARISH SEAT

The first parish seat was established at Lafayette in 1825,<sup>65</sup> but was removed to the City of Carrollton in 1852, when Lafayette was annexed to the Parish of Orleans.<sup>66</sup> In 1858, when the state legislature created two distinct police juries within the parish, the two police juries, the officials of the City of Jefferson and the Town of Carrollton, all held their meetings at the courthouse in Carrollton.<sup>67</sup> In 1874, when the City of Carrollton was annexed to New Orleans, the seat of the parish was moved across the river to Harvey, where Harvey's Castle, built in 1844 by Captain Joseph Hale Harvey, served as the courthouse.<sup>68</sup> It was resolved on May 7, 1884 to move the courthouse, parish offices and records from Harvey to William Tell Hall in Gretna.<sup>69</sup> On April 4, 1876, a bill was introduced to the police jury for the sale of the courthouse in Carrollton, the proceeds of the sale to be divided forty-five per



## FRANK DeSALVO'S

*Grocery, Bar  
and Restaurant*

Main Highway  
Harvey, La.

Uptown 9384

## CLERC LUMBER CO., Inc.

BUILDING MATERIAL

"LONG LEAF PINE"

Governor Hall and First Streets

ALgiers 2159

GRETN

## J. C. COLLINS, Agent

SINCLAIR REFINING COMPANY

Distributor

Gasoline, Greases, Oil, Insecticides and other Sinclair Products

ALSO GOODYEAR TIRES AND BATTERIES

P. O. Box 22—Westwego, La.

WAlnut 4759

## The North American Trading & Import Co.

"NATICO" BLACKSTRAP MOLASSES

Publicker Commercial Alcohol Co.

Westwego, Louisiana



OFFICIALS OF THE VILLAGE OF HARAHAN

Reading from left to right: Joseph Crochet, Alderman; John Contrado, Marshal and Chief of Volunteer Fire Department; Frank H. Mayo, Mayor; Ernest Barron, Alderman, and Philip Boudreaux, Alderman.

cent to New Orleans, thirty-seven per cent to Jefferson Parish, Right Bank, and eighteen per cent to Jefferson Parish, Left Bank. The sale was not reported until 1890, Jefferson receiving \$4,312.00 as her share.<sup>70</sup> This building, on Carrollton Avenue, was occupied from 1855 to 1874 by the administrative offices of the city and parish.<sup>71</sup> Today it is the McDonogh No. 23 grammar school. In 1906 the police jury was empowered to dispose of the courthouse on the corner of Newton and Third Streets, in Gretna, and a new courthouse was built at its present location on Huey P. Long Avenue.<sup>72</sup>

### BOUNDARIES

Jefferson Parish has had many boundary changes. The first act of creation gave no definite limits to the parish except those already prescribed in the Constitution of 1812 for the "third senatorial district above Nuns Plantation". It has already been shown how Lafayette, Jefferson City and Carrollton were incorporated with New Orleans. Several other acts clarified the existing boundaries, but made no changes.<sup>73</sup> On August 6, 1890, in view of "considerable uncertainty as to the exact location of the boundary line between the parishes of Orleans and Jefferson from the Mississippi River to Lake Pontchartrain", the police jury "for the sake of harmonious relations of the government of the two parishes", resolved to employ a surveyor on the part of Jefferson.<sup>74</sup> This survey was completed in 1892, and recognized by the City of New Orleans.<sup>75</sup>



GOOD  
COOKS  
PREFER



## CHAS. PERRIN

Trucking Contractor and Warehouse

UPtown 4749

Residence, UPtown 8797

On Intracoastal Canal

HARVEY - - - LOUISIANA

## Boulevard Garage & Beer Parlor

MARRERO

Beer, Wine and Whiskies

Gas—Everything—Oil  
For Cars

UPtown 9350

R. W. MAYRONNE, President

O. H. MAYRONNE, Sec.-Treas.

## MAYRONNE LUMBER & SUPPLY CO., Inc.

LUMBER, MILLWORK, ROOFING, BUILDING MATERIAL,  
CEMENT, BRICK AND LIME; FEED AND COAL

Distributors of

JOHNS-MANVILLE RIGID ASBESTOS SHINGLES

UPtown 8645, 8646

MARRERO



#### OFFICIALS OF THE CITY OF GRETNA

Seated, left to right: Frank Bessler, Alderman; Henry F. Bender, Alderman; Edward J. Strehle, Mayor; Beauregard Miller, Chief of Police; G. Ashton Cox, Alderman, and John T. Gegenheimer, Alderman.

Standing, left to right: Burt G. Strehle, Engineer; Julius F. Hotard, Clerk; Andrew H. Thalheim, Attorney; Eugene Gehring, Alderman; N. B. Knight, Treasurer, and Wm. E. Strehle, Tax Collector and Superintendent of Waterworks.

Recently the discovery of oil in the marshes of the Gulf region has brought about a dispute between Jefferson and Lafourche over the possession of Grand Isle, Hackberry Bay and Cheniere Caminada. Lafourche Parish bases its claim on the act of 1824 which states that "half of the Pass Moniden as far as the sea, including the Grand Isle, shall constitute the eastern boundary of the Parish of Lafourche, any law to the contrary notwithstanding".<sup>76</sup> Jefferson Parish, however, claims that the two subsequent acts of 1827 and 1830 abrogates the earlier act by specifically placing both Grand Isle and Cheniere Caminada in this parish.<sup>77</sup> Moreover, in the revised statutes of 1852, the boundary of Jefferson is given as "a line which is not definitely defined, but includes the Cheniere Caminada and Grand Isle, separating the said Parish of Jefferson from the Parish of Lafourche Interior, to the Gulf of Mexico."<sup>78</sup> Each parish has appointed a committee to examine the respective claims and report on them June 15, 1939, at Des Allemands.<sup>79</sup>

#### POPULATION GROWTH

The earliest census of the parish, in 1830, showed 6,846 persons.<sup>80</sup> From that time until 1850 the population increased steadily,<sup>81</sup> but between 1850 and 1860 there was a loss of 10,000 which can be attributed to the annexation of the City of Lafayette to New Orleans.<sup>82</sup> There was further decrease between 1870 and 1880, due to the annexation of the City of Jefferson and the City of Carrollton to New Orleans.<sup>83</sup> Since that time the number of inhabitants of Jefferson has been increasing, doubling between the years 1920 and 1930,



Exclusive Distributors of Schenley Products

## UNITED LIQUORS

INCORPORATED

WHOLESALE ONLY

232 Canal

New Orleans

Jos. B. David, Pres.

H. E. Brister, Gen.-Mgr.

## Orleans Material & Equipment Co.

REINFORCING MATERIALS—STEEL SHEET PILING  
STRUCTURAL, ORNAMENTAL & MISCELLANEOUS IRON

2730 Clio Street

P. O. Box 87

RAYmond 9538

NEW ORLEANS, LOUISIANA

## RYKOSKI, INC.

DISTRIBUTORS OF

Kerrick Kleaners - Ingersoll-Rand Compressors - Lincoln Lubrication  
Equipment - Exide Batteries - Timken Roller Bearings  
SKF Ball Bearings

Phones RA. 2296-7-8

920 Julia Street

New Orleans, La.

## The Loubat Glassware & Cork Co. Cooking and Serving Equipment and Supplies

For Hotels, Restaurants, Bars, Cafeterias, Clubs,  
Hospitals and Institutions

NEW ORLEANS

LOUISIANA



#### OFFICIALS OF THE TOWN OF WESTWEGO

Seated, left to right: L. Guidry, Alderman; L. J. Bernard, Alderman; J. Gassenberger, Alderman; Mrs. Alice Bouvier, Secretary, and Vic. A. Pitre, Mayor.  
 Standing, left to right: Vincent St. Blanc, Treasurer; Eddie Bye, Alderman; W. H. White, Town Marshal; Joseph Marcombe, Alderman, and Leonard Hoorman, Accountant.

when the figures for the latter year showed 40,032 inhabitants.<sup>84</sup> The Parish officials believe that the population today is at least 45,000.

#### TAXES AND ASSESSED PROPERTY VALUES

The total taxes collected for the year 1877, one of the earliest records available, amounted to \$14,979.63.<sup>85</sup> Due to the growth of the parish in population and to its recognition as a commercial center, which has brought in many large corporations, the tax receipts rose, until in 1937, the real and personal, state and local taxes amounted to \$1,012,525.56.<sup>86</sup> The total assessed property value for 1938 amounted to \$29,586,759.00, an increase of \$711,542 over the 1937 evaluation.<sup>87</sup>

#### AREA SOIL

Jefferson has an area of 426 square miles.<sup>88</sup> All of the lower part of the parish is coastal marsh, and the entire parish is alluvial, formed by the sediment brought down by the Mississippi. The highest and most productive land is near the banks of the Mississippi River and the bayous from which it slopes off into wooded swamps. There, the principal forest growth is cypress, ash, hickory, sap gum and tupelo.<sup>89</sup> The alluvial soil is fertile, and at present more than 4,000 acres of Class A lands are under cultivation for truck crops. Proximity to New Orleans insures a market for practically everything raised, while excellent transportation facilities, combined with a long growing season, enable farmers to ship their products in early spring and late fall.<sup>90</sup>

FOR AWNINGS, TARPAULINS  
VENETIAN BLINDS

## Brook Tarpaulin Co.

J. A. O'CONNOR, President 357 Vincent Ave., Metairie CEDar 1368  
1730 Tchoupitoulas St. RAYmond 4169

Best Quality—Low Prices—Club Plan  
ANYTHING IN CANVAS

## S. H. KRESS

5c, 10c and 25c Store

923 CANAL STREET

NEW ORLEANS, LA.

Day and Night Service

## Bishop-Edell Machine Works, Inc.

"GENERAL MACHINE REPAIRS"

Marine and Industrial

"DIESEL ENGINE SPECIALISTS"

Cylinder, Crankshaft and Surface Grinding—Gear Cutting, Forging, Boiler  
Repairing—Welding and Portable Equipment of All Kinds

Phones: RA. 5221-5222

1008-20 Magazine St.

Nights and Holidays Call: JA. 1478, AL. 1176-W, GA. 3583 New Orleans, La.

## M. FEITEL HOUSE WRECKING CO., Inc.

Established 1888

New and Used Building Materials

3900-3922 Tulane Ave.

Phones GALvez 1178-1179

NEW ORLEANS

## MILLER'S FEED STORE

C. A. O'NEILL, Manager and Field Service Man

DISTRIBUTORS OF

STAF-O-LIFE QUALITY FEEDS

HAY - STRAW - OATS - CORN

We deliver to Jefferson Parish Daily

We Do Custom Hatching, 2c Per Egg

3929 So. Carrollton Ave.

Phone GA. 7401

New Orleans, La.

## PRODUCTS AND RESOURCES

In 1937, income from cattle and dairy products alone amounted to \$113,357. Jefferson's 273 dairies produce approximately 2,500,000 gallons of milk annually. Practically seventy-five per cent of the dairymen are now raising their own stock, and about fifty per cent have substituted home-grown feed for commercial feed, resulting in an appreciable saving. In conjunction with dairying and agriculture, the farmers are finding poultry and swine raising profitable side lines. All the feed needed for these enterprises can be supplied by culled inferior vegetables, surplus grain and skim milk.<sup>92</sup>

Before and for some time after the Civil War, the cultivation of sugar cane was the most important industry of the section, until Mosaic disease almost destroyed the cane crop of Louisiana. With the introduction of Mosaic resistant varieties of cane, however, the industry has revived somewhat in the parish, and sugar cane is again being grown on a commercial scale near the St. Charles-Jefferson line.<sup>93</sup>

Another agricultural enterprise of the Parish is floral culture. Many florists sell their products in New Orleans, while others ship them to points in the north. Along with this has come the successful production of lily-bulbs. The industry in Jefferson Parish has been greatly advanced by the experiments of Dr. Julian Miller in disease resistant varieties.<sup>94</sup>

Fish are plentiful, and the shrimp and oyster industry is of considerable importance, especially around Barataria Bay. Manila Village is a typical shrimping settlement, where the sole activity is the drying of shrimp for marketing. Philippine immigrants originally settled here, and their descendants still speak a Spanish patois. Another shrimping village is Bassa Bassa, where the majority of the population is Chinese. The shallow waters of the lower parish have just the proper salinity for the growth of oysters, and in 1937 produced 63,343 barrels.<sup>95</sup> Another industry of local importance is the marketing of soft-shell crabs. At Fleming Canal Store on Big Bayou Barataria, Felix Favallora operates a crab exchange where more than 300 families bring their catches for sale. Some of the crabs are shipped alive to New Orleans, others are packed in ice for shipment to points all over the United States.<sup>96</sup> Just beyond the city limits of New Orleans, at Shrewsbury, is located a factory for the canning of frog legs. Trapping of muskrat, mink, otter, raccoon and opossum gives employment to hundreds of trappers during the winter months.<sup>97</sup>

In recent years the parish has become one of the most highly industrialized centers of southern Louisiana, with many large manufacturing plants in operation throughout the year. Today, more than fifty-five per cent of all products manufactured in and shipped from the Port of New Orleans are manufactured on the right bank of the Mississippi River in Jefferson Parish. The reasons for this growth are obvious. The area across the river is a natural distribution point. As a part of the Port of New Orleans, large vessels may dock in the harbor. It also has seven trunkline railroad lines and access to Gulf ports by the Intracoastal Canal. There is enough land to permit establishment and future development of large plants, plentiful labor, and a low tax rate for industry. Here is located the main plant of The Celotex Corporation, which makes wall board from sugar cane bagasse, fibre residue left after the juice has been squeezed from the cane. The plant has expanded until it now covers 140 acres.<sup>98</sup>

FOR INSECT RIDDANCE

Spray with

**LYONS' LIQUID INSECT SPRAY**

THE NEW AND BETTER INSECTICIDE

Pint Bottles 25c

at your Drug Store

**Firestone Auto Supply & Service Stores**

A Complete Line of Tires, Batteries, Brake  
Lining and Auto Supplies

RAYmond 0366-7-8

557 N. Rampart St.

**JEFFERSON CLEANERS**

L. S. HOPKINS, Proprietor

CLEANING AND ALTERATIONS—HATS BLOCKED  
(MONITE MOTH PROOF CLEANING)

Phone ALgiers 2201

930 Derbigny St.

GRETN, LA.

WISHING CONTINUED PROGRESS TO JEFFERSON PARISH

**GREAT SOUTHERN NOVELTY CO.**

409 S. Rampart St.

"Buster" Clesi, Manager

MAGnolia 3634

**LEITZ-EAGAN FUNERAL HOME, INC.**

GRETN and NEW ORLEANS

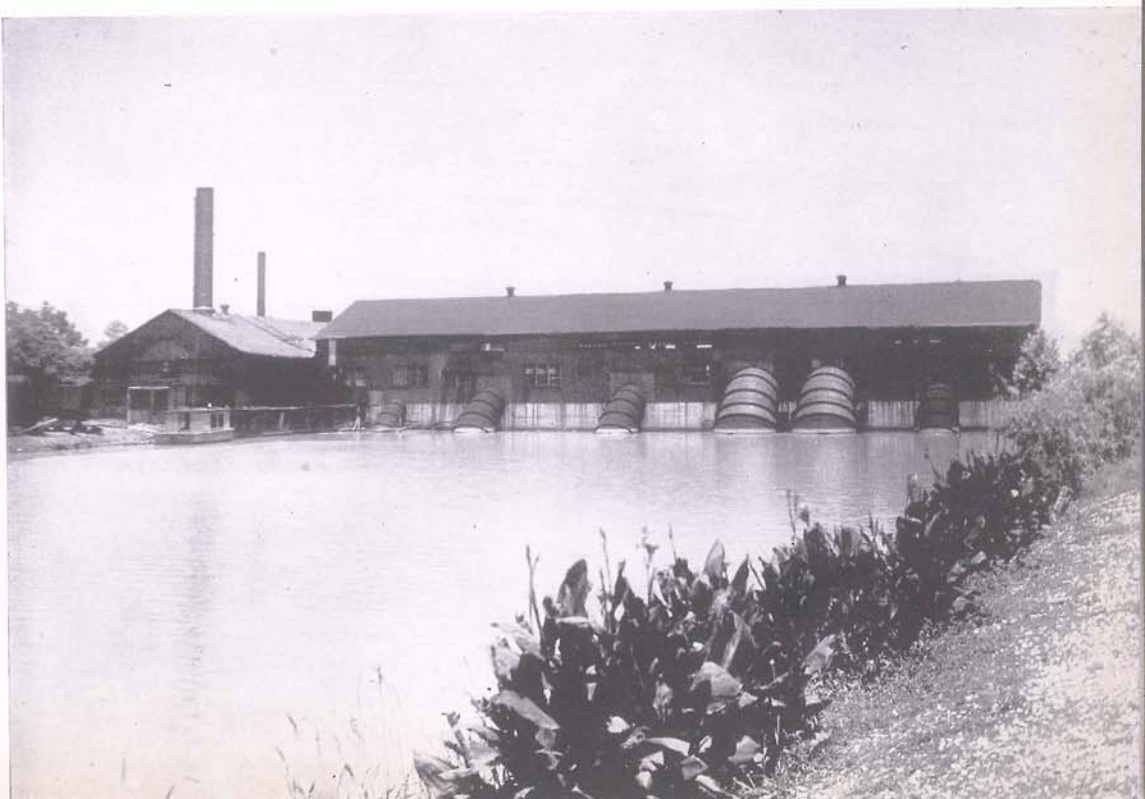
Oil was discovered near Lafitte in 1933, and the first well brought in by The Texas Company, in May, 1935. The company now has a large gasoline plant at Lafitte. This is one of the most constant oil reserves in Louisiana. Thirty wells have been bored, of which only one was a dry hole.<sup>99</sup> In 1937 there were 3,847,930 barrels of oil taken out of this Jefferson field.<sup>100</sup>

### SOCIAL PROBLEMS

During the first hundred years of the parish's existence, social problems were referred to only incidentally by the police jury. The parish did, however, consider itself responsible for the burial of paupers, transportation of the poor sick to the state hospital, and for a certain amount of direct aid to indigent persons.<sup>101</sup> In 1860, twenty years before the passage of any state law, the police jury authorized its president to take care of a sick pauper. As a means of preventing the parish from supporting a large pauper population, the police jury granted free licenses to widows, widows with children, and to infirm persons for the privilege of running small general stores or peddling goods.<sup>102</sup>

Recognition of the desirability of caring for dependent children in their own homes caused the establishment in 1921 of a widows' and orphans' pension by the police jury. These pensions were customarily for a definite amount over a stated period of time, as thirty-five dollars for six months, or twenty-five dollars for one year. There is no mention of any supervision of the families receiving this fund, nor of any qualifications as to who should receive money from the fund.<sup>103</sup> By a resolution passed in 1932 the \$2,000

Pumping plant of the Jefferson-Plaquemines Drainage District, on Harvey Canal and Little Bayou Barataria. This drainage district drains parts of both Jefferson and Plaquemines Parishes.



## FISHER'S STORE

CHARLES LEVY, Prop.

GENERAL MERCHANDISE

Phone Us for Arrangements for Fishing Trips

PHONE LAFITTE 5103

LAFITTE, LA.



H. SLIFSGARD, Distributor

Gulf Refining Company Products

That Good Gulf Gas

Phone ALgiers 1828

Gretna, La.

## MULLEN SHIP YARD

Builders, Designers and Repairers of Crafts—Of All Description

Engines Repaired and Rebuilt

Distributor of Gulf Products—Marine Bulk Plant

On Intracoastal Canal

AUdubon 1472

Harvey, Louisiana

## ROOF GARDEN CLUB

McDONOGHVILLE

ALgiers 9110

## CLEM PERRIN

FUR BUYER

LAFITTE, LA.

*Motor and Speed Boats—Fishing Equipment—For Rent*

Phone Lafitte 5204

budgeted for the paupers is pro-rated among the fourteen members of the police jury to aid widows and orphans residing in their respective wards.<sup>104</sup> At present the police jury and the Department of Public Welfare, supplemented by government agencies, takes care of the relief cases of the parish.<sup>105</sup>

Care of orphans began in 1834, when the police jury ordered all fines collected from its members for non-attendance or refusal to serve when elected to be turned over to the orphan boys' asylum in Jefferson Parish.<sup>106</sup>

Hope Haven Farm, a Catholic orphanage and training school for boys from the age of ten to manhood, is on Barataria Road a mile and a half beyond the town of Marrero. Across the road from this institution is Madonna Manor, which cares for younger boys. Both of these charitable homes are the work of the Right Rev. Monsignor Peter M. H. Wynhoven, founder and director.<sup>107</sup> The main units of Hope Haven were dedicated in 1927. They consist of modern buildings in the Spanish mission style. Here neglected boys of all creeds and from any part of Louisiana, are given a home and educated in some skilled work which will make them self-supporting. In order that each boy may be given instruction in the trade or pursuit for which he is best fitted, a special vocational department is maintained.<sup>108</sup> The Madonna Manor unit was opened on September 6, 1932. Every effort has been made to create a home where the children will be made to forget they are orphans, and where they may have the opportunity of developing to the highest degree their personalities and talents.<sup>109</sup> The police jury of Jefferson Parish has contributed to Hope Haven since 1918.<sup>110</sup> In 1923 they appropriated the sum of \$1,500 for the support of parish orphans, and in 1930 signed a contract with Hope Haven by the terms of which the farm would receive five dollars a month for each boy sent them by the parish. The contract was renewed in 1933, and has since worked to the satisfaction of both parties.<sup>111</sup>

## SCHOOLS

There have been schools in Jefferson Parish since the creation of the parish, but they were not free public schools in the true sense. Although open to all white pupils without distinction to class, they charged tuition to those who could pay. Each school, however, provided for a limited number of indigent pupils, whose tuition was paid out of the state appropriation for education.<sup>112</sup> It is a matter of record that true "free public schools" were planned by the Jefferson Parish school authorities in 1841, four years before they existed in any other part of the state.<sup>113</sup> In that year, the council of the City of Lafayette passed an ordinance for the establishment and organization of the first public school "for the gratuitous education of children of both sexes to which all children of proper age of white resident parents shall be admitted."<sup>114</sup> From that time on, the schools of the parish advanced, and now rank equally well with any other schools in the state. In the past thirteen years over a million dollars has been spent for school buildings. At present there are six senior high schools, five of which have elementary departments; one junior high school and nineteen elementary schools.<sup>115</sup> Recently a bond issue was floated to build \$1,600,000 worth of schools, stadia and gymnasiums and to improve school grounds.<sup>116</sup>

Among the private schools is the Metairie Park Country Day School, which fosters progressive education. It was launched by a group of co-operat-

## Betz Service Station

TIRES, TUBES AND ACCESSORIES

Gulf Products—Road Service

*Fred W. Betz, Prop.*

Phone CEdar 9105

Metairie Road

METAIRIE RIDGE ICE CO., INC.  
JEFFERSON BOTTLING CO., INC.

THE CITY ICE CO.  
ARCTIC PURE ICE CO.  
CEdar 1126

DRINK—

BIG SHOT ROOT BEER  
DOUBLE COLA      TOM COLLINS JR.

## ALVIN E. HOTARD

CIVIL ENGINEER

Phone ALgiers 1017

GRETN, LA.

# BRILLO

CLEANS ALUMINUM QUICKLY

2 EASY WAYS

CLEANSER  
5 PADS & SOAP  
SEPARATE

or

SOAP PADS  
5 SOAP-FILLED  
PADS

### Shorten Your Work Day

Do your housekeeping faster, better and easier with BRILLO—the modern cleanser. No messy rags, brushes or powders—just the big, square BRILLO soft metal fiber pads and special formula BRILLO soap—world's fastest cleanser. Try BRILLO today!

BRILLO MFG. CO.

Brooklyn, N. Y.

**FRANK A. LEE**

Louisiana and Texas District Manager

## EIGHTH WARD DEMOCRATIC CLUB OF JEFFERSON PARISH

*Metairie, Louisiana*

John Bordes, Chairman  
George Hein, Vice-Pres.  
Louis E. Breaux, Treas.

Ernest Riviere, President  
Dan W. Eastman, Vice-Pres.  
Mrs. D. E. Eastman, Secty.

The oldest Political Club in Jefferson Parish—Organized in 1923 by John Bordes

ing parents of New Orleans, in September, 1929. Situated in Jefferson Parish, adjoining New Orleans, on Park Road at Duplessis Street, Metairie, it is far enough away from the congestion and noise of the city to be in a distinctive atmosphere of its own, yet near enough for the children to be taken back and forth every day in busses. They thus have the advantage of a boarding school and of home life at the same time. When the school was opened, it took children only through the sixth grade. Now it takes them through high school. The present enrollment is about 170.<sup>117</sup> This school is so conducted that home work is not necessary except for students in the high school.

### CITIES AND TOWNS

Several of the towns of Jefferson are connected with historical events and colorful legends. Kenner, incorporated in 1873,<sup>118</sup> is situated on the east bank of the Mississippi River twelve miles above New Orleans, and is one of the oldest towns in the parish. In the days before the Civil War, when sugar culture was important, this section was known as "Cannes Brules" or "Burnt Cane." On a map dated 1858, Coleman's Mill is shown, where cannon and cannon balls were made during the Civil War. This foundry was located just off the present Williams Street, in a section since taken into the river. Two of the largest sugar plantations were owned by the Kenner brothers. When sugar became no longer profitable, the owners divided their plantation into lots, which they sold to settlers. The first settlers were of Irish and German descent, but later many Italian families settled here. It was during this period that extensive truck farming came into prominence. Served by three railroads and two paved highways, Kenner is able to ship vegetables to all parts of the country.<sup>119</sup>

View of Hyman Subdivision, taken from the Mississippi River levee. Two years ago, this was vacant property.



## Metairie Hardware & Paint Store

Headquarters for Sherwin-Williams Paints and Products

We Rent Floor Sanding Machine

603 Metairie Road

Phone CEdar 9127

Excellent Fishing, Hunting and Hotel  
Accommodations

## FORNEST MILLIET

BAYOU RIGAUD

GRAND ISLE, LA.

## BOLAND MACHINE & MFG. CO., Inc.

OF JEFFERSON PARISH  
LAFITTE, LA.

General Machinery Repairs, Boiler Repairs, Blacksmiths,  
Coppersmiths, Pattern Makers, Electric Welding, Engineers  
Tel. Goose Bayou 5221 Clyde Bourgeois, Representative

## J. S. WATERMAN & CO., INC.

426 S. PETERS ST.

Flour, Bakers' Supplies and Bakers' Machinery

## HURWITZ-MINTZ FURNITURE CO.

211 ROYAL STREET

RAYmond 1388

NEW ORLEANS

Two miles below Kenner is Harahan, incorporated in 1920 by proclamation. Located in the heart of a fertile area suitable for truck farming, dairying, stock and poultry raising, this section annually supplies New Orleans with a large amount of farm produce. Harahan's proximity to New Orleans, combined with the lower cost of living, makes it an ideal place for suburban homes.<sup>120</sup>

Metairie, from a French word meaning "farm", is situated immediately west of and adjacent to the City of New Orleans, comprising an area of about six square miles. Metairie Bayou, once a navigable stream alongside the present Metairie Road, by overflowing its banks with each high water period many years past, caused silt to settle on each side of the bayou, thereby building up the so-called "Ridge", which is several feet higher than the greater portion of the residential area of New Orleans. It is only natural that those seeking larger homesites, easily accessible to the business section, became interested in locating in Metairie, now but fifteen minutes drive by auto to the business center of the city.<sup>121</sup> Just across Metairie Bayou from the road is Metairie Cemetery, reputed the finest in the entire world. It is located at the junction of Metairie Road and Pontchartrain Boulevard. In the early days, this was the old Metairie Race Track, where many famous races were run in the ante-bellum period.<sup>122</sup>

Today, many residential areas have been developed, rapidly attracting Orleanians to this section. Metairie averages five to ten degrees cooler than the City of New Orleans during the summer months. Metairie Club Gardens, a residential park, surrounded by the Metairie Golf Course, has a minimum

Home of Harry Papworth, Metairie. A prominent New Orleans florist. Mr. Papworth resides and has his nurseries in Jefferson Parish.



A perfect blend of Choice Meats and Spices Makes

***Favorite Sausages***

**"The Preferred Kind"**

Made  
by

**L. A. Frey and Sons, Inc.**

NEW ORLEANS

Makers of Good Sausage for over 50 Years

**The H. Sophie Newcomb Memorial College for Women**

Ideally situated in the South's Greatest City

Offers full courses in:

Arts and Sciences, B. A.

Fine Arts and Crafts, B. F. A.

Applied Science, B. S.

Music: B. Mus.

For catalogue and further particulars

Address

**REGISTRAR, NEWCOMB COLLEGE**

New Orleans, La.

**"SERVICE DIRECT TO YOUR HOME"**

**TRICO**

**COFFEE COMPANY**

**LOUISIANA ICE SERVICE, INC.**

C. H. FREE, Manager

Office:  
1127 Julia St.  
NEW ORLEANS  
RAYmond 0651

Plant:  
WAlnut 9147  
WESTWEGO

**Crane's Clothing Co.**

1218 CANAL STREET

ASK FOR

**OLD COMISKEY**

KENTUCKY'S FINEST BOURBON WHISKEY

**JAMES E. COMISKEY CO.**

RAYmond 9411—9412—9413

restriction of \$15,000 for each home built therein, and is rapidly building up with magnificent residences on beautifully landscaped grounds. It is one of the showplaces of New Orleans. Many other restricted residential areas have been developed, such as Vincent Place, Oak Ridge Park, Farnham Place, Crestmont Park, Livingston Place, Beverly Knoll, Brockenbraugh Court, Bon-nabel Place, Athania Place, Elmeer Place, Forest Hills, Ridgeway Terrace and Metairie Terrace. Metairie and the Colonial Golf Clubs offer year round sport for the golfer. Although residents of Metairie enjoy free delivery service from merchants of New Orleans, it has its own shopping center and grocery stores, bakeries, hardware stores, drug stores and a neighborhood picture theatre. A ten minute bus schedule furnishes ample transportation facilities. Two public schools, several parochial and private schools provide educational facilities.<sup>123</sup>

Gretna, the parish seat, was settled in the eighteenth century by a group of German immigrants who called their village Mechanickham. John Baptiste D'Etrehan (now spelled Destrehan) a large land owner, hired some of these settlers to dig a canal for him from the Mississippi River to Little Bayou Barataria, a distance of five miles. The canal was completed in 1741 and named in his honor.<sup>124</sup> Passing from father to son, it became the property of Nicholas Noel Destrehan, of Jefferson Parish. When he died in 1848, the canal remained under the control of his daughter, Mrs. Louise Destrehan Harvey.<sup>125</sup> Following the Civil War the name was changed to Harvey's Canal. It remained in the Harvey family until 1924, when it was purchased by the United States as a part of the Intracoastal Waterways System. Today the canal is equipped with locks, and connects with waterways from Harvey to Galveston and Houston, Texas.<sup>126</sup>

The evolution of the name of the settlement from Mechanickham to Gretna involves a bit of romantic legend. About a hundred years ago an old Creole

Pumping plant of Sixth Jefferson Drainage District, draining Westwego.



"You're there with a Crosley"

CROSLEY RADIOS AND SHELVADOR ELECTRIC  
REFRIGERATORS—WASHERS—GAS RANGES

**INTERSTATE ELECTRIC CO.**

643 MAGAZINE

Southern Distributors

NEW ORLEANS

**LAWYERS TITLE INSURANCE  
CORPORATION**

2nd Floor Baronne Building  
NEW ORLEANS, LA.

**M. D. KOSTMAYER, Agency**

GENERAL INSURANCE

RAYmond 6151

New Orleans

709 United Fruit Bldg.

BOATS—ENGINES—PROPELLERS

Steel Tugs and Work Boats

**HIGGINS INDUSTRIES, INC.**

1755 St. Charles Ave.

New Orleans, La.

DISTRIBUTORS—CHRIS-CRAFT BOATS  
EVINRUDE AND ELTO OUTBOARD MOTORS  
High Pressure Pump—For Exploration—Oil Drilling

**W. HORACE WILLIAMS CO., INC.**

ENGINEERS—GENERAL CONTRACTORS

SOUTHERN BLDG.

833 HOWARD AVE.

**SCHAYER-BADINGER**

Automotive Service

ESTIMATES ON REQUEST

724 South Saratoga St.

RAYmond 1281-1282

Night Service—WALnut 6866



State Fire Marshal Frank A. Vonder Haar hooks a fighting tarpon in the Gulf waters off Grand Isle. The interested oarsman is 'Mike' Mailhes.

justice of the peace lived there, who gained the reputation of performing marriages at any time of the day or night. The frequency with which run-away couples made use of his services gave rise to the expression, "They went to Gretna," from the town of Gretna Green, just across the border of Scotland, well known in England for the same reason.<sup>127</sup>

Gretna was incorporated as a town by governor's proclamation on August 20, 1913,<sup>128</sup> and in 1916 was incorporated as a city by the legislature.<sup>129</sup> In 1930 the city had a population of 9,584. Transportation facilities are excellent. It is connected with New Orleans by two ferries, it marks the terminus of the Texas and Pacific and Missouri-Pacific Lines, and is traversed by the Southern Pacific and the New Orleans and Lower Coast Lines. Concrete highways connect the city with all parts of the state, the Intracoastal Canal is only one mile away, and extensive river frontage provides docking facilities for ocean liners. The city has a modern filtration plant and sewerage system, and a municipal garbage incinerator. There are churches of many denominations, and numerous public and parochial schools, including one of the largest and finest high schools in the state. Gretna operates under the aldermanic form of government, having a mayor and a board of aldermen.<sup>130</sup>

At McDonoghville, now incorporated as a part of Gretna, is the cemetery established by John McDonogh for his slaves. McDonogh, born in Baltimore, came to New Orleans in 1800 and amassed a large fortune from sugar plant-

## Chase Brass & Copper Co., Inc.

Copper Tubes and Fittings—Copper Roofing Material  
Bronze and Copper Screen Cloth, Copper Nails, Etc.

WALTER E. EVANS, District Manager

429 CAMP STREET

NEW ORLEANS

## CRESCENT TYPEWRITER EXCHANGE

407 St. Charles Street

New Orleans, Louisiana

General Agents for

L. C. SMITH AND CORONA TYPEWRITERS

All Makes TYPEWRITERS Sold, Rented, Repaired

New and Used Portable Typewriters of All Makes. Rebuilt Standard

Machines of All Makes. Rebuilt Cash Registers Bought and Sold.

RAYmond 3741

Established 1894

## F. F. HANSELL & BRO., Ltd.

OFFICE AND SCHOOL FURNITURE

BOOKSELLERS AND STATIONERS

131-133 Carondelet Street

New Orleans, La.

Paul Abele

Otto Abele

## ABELE BROTHERS

Florists and Nurserymen

MEMBER FLORISTS' TELEGRAPH DELIVERY

JOSEPH STREET, CORNER LAUREL

Uptown 1533

New Orleans

Nursery—Richland Gardens—Jefferson Parish

## Install Fire Protection Equipment

BEFORE YOUR FIRE!

AVOID DISASTER!

## American-LaFrance & Foamite Protection

C. E. GILMORE

400 N. Peters St., New Orleans

RAYmond 4677

MAGnolia 5616

## Salcedo Distributing Company, Inc.

PETROLEUM PRODUCTS

MOTOR OILS, GASOLINE, KEROSENE, FUEL OILS,  
NAPHTHA, GREASES

1101-1113 S. Salcedo St.

New Orleans

ing, brick manufacturing and real estate. In 1817 he left New Orleans and moved across to one of his plantations on the west side of the river, where later the town of McDonoghville grew up. When he died in 1850, he was the first white man to be buried in the cemetery set aside for his slaves. Subsequently other white people were interred there, but while Edward Thornton, a former slave of McDonogh, served as caretaker, there was no separation of the graves of negroes and whites. In 1891 Mayor Shakespeare of New Orleans ordered their separation, and today the negroes all lie at the southern end of the cemetery. Some years after McDonogh's death, his remains were moved to Baltimore in deference to a request in his will. Known during his life as a miser and an eccentric, McDonogh is remembered for his philanthropic deeds. He allowed his slaves to buy their freedom from him by a system of extra work, and at the end of fourteen years sent them to the colony in Liberia. His scheme was a complex device in which kindness and acquisitiveness each played a part. Although he really wished to help his slaves, he nevertheless expected to and did profit by the transaction. According to his own admission, he was able to buy two new slaves for the price that one paid him for liberation.<sup>131</sup> At his death, it was discovered that he had left a million dollars to the City of New Orleans for educational purposes. Thirty-six schools were erected, all bearing his name. Today his memory is honored by the school children of New Orleans, who on the first Friday of each May place flowers

Left to right: Al Juge, State Fire Marshal Frank A. Vonder Haar, Leon Trice, Witt D. Tinney, M. J. White and Gus Jaquet. The deer in the background were killed in one hunt near the Jefferson-St. Charles Parish line.



**CAREY & HELWICK****HARDWARE AND SPORTING GOODS****120 CAMP STREET****RAYmond 5426, 7281**

PAINTS, STOVES, PLOWS, HARROWS, COLEMAN LAMPS,

IRONS, STOVES, ALADDIN MANTLE LAMPS

**WE CARRY PARTS AND REPAIR COLEMAN PRODUCTS**

CEdar 9159

Day and Night Service

**THE PINES SERVICE STATION****SHELL PRODUCTS EXCLUSIVELY  
TIRES TUBES ACCESSORIES**

Metairie, Shrewsbury and Airline Roads

**N. H. LAZARONE, Prop.****Wrecker Service****Jefferson Parish Developers, Inc.**Developers of  
**HYMAN SUBDIVISION****SIERRA PLACE****CLAIBORNE GATEWAY**

John L. Lauricella, Pres.

H. B. Rainold, V. P.

A. G. Van Derburgh, Secty.-Treas.

Cedar 1005

Hyman Subdivision

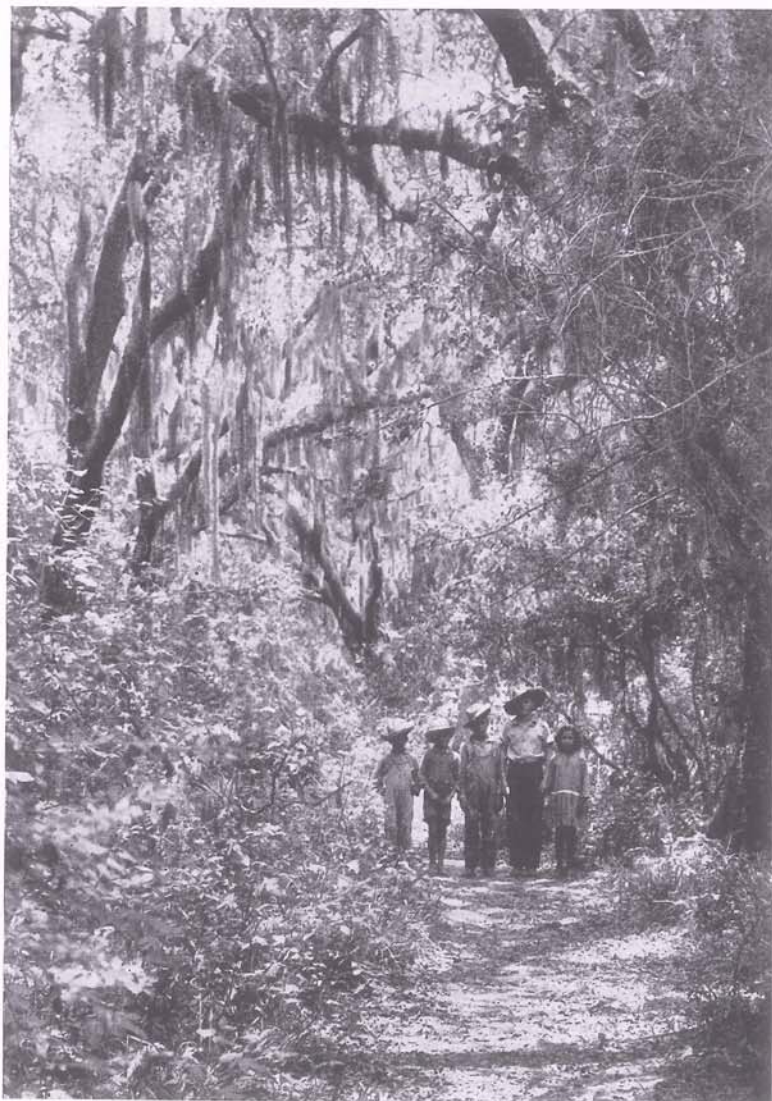
Magnolia 2289

730 Gravier St., New Orleans

**The Truckers Ice & Cold Storage Co., Ltd.***DAY AND NIGHT SERVICE***KENNER**

Telephone Kenner 175

**MOONLIGHT INN***Large Parking Ground**Sandwiches and Drinks of All Kinds**24 Hour Service**3205 Jefferson Highway**Jefferson Parish***LAKE FOOD AT ITS BEST****ORIGINAL BRUNING'S RESTAURANT****ON LAKE PONTCHARTRAIN**East End  
Jefferson ParishWest End Park  
New Orleans



A lane in Grand Isle. Never troubled by severe cold, the vegetation on this island attains tropical luxuriance.

about his statue in Lafayette square. The school children of McDonoghville honor him by placing flowers on the empty tomb he once occupied.

Westwego, located on the river above Gretna, was incorporated on January 18, 1919, by proclamation of Governor R. G. Pleasant. At that time the entire population numbered only 1,583. Today it is a town of nearly 5,000 inhabitants. The streets are paved, and sub-surface drainage and curbing have been installed on all the main thoroughfares. Ferry service and the Huey P. Long Bridge put the town within twenty minutes of the shopping district of New Orleans.<sup>132</sup>

#### BARATARIA SECTION

Barataria is one of the most picturesque sections of Louisiana. Originally the name applied only to Barataria Isle, but now includes the whole lower

## BROWN'S RESTAURANT & CAFE

For Over 20 Years The Best Place To Eat

FINE WINES AND LIQUORS

At Jackson Ferry Landing

GRETN, LA.

## JOSEPH RIBAU

TRANSFER AND GROCERY

DRAYAGE OF ALL KINDS

Hauling When and Where You Want It

We Solve Your Trucking Problem

714 Fourth St.

ALgiers 2135

GRETN



## Gulf & Valley Cotton Oil Division

Manufacturers of

COTTONSEED SHORTENINGS AND OILS

**BLUE PLATE FOODS, INC.**

Manufacturers of Delicious Blue Plate Food Dressings

ALgiers 2183

## GRETN HARDWARE CO.

125 HUEY P. LONG AVE.

CLIMATIC PAINTS

ZENITH RADIOS

LEONARD AND WESTINGHOUSE REFRIGERATORS

## CARLO DITTA

COAL

Let Us Fill Your Lots With Mississippi River Sand

UPtown 2687

634 Manhattan Ave.

Harvey, La.

## BILLIONAIRE INN

LEWIS AND FINK PLACE

221 Huey P. Long Ave.

Phone ALgiers 9122

GRETN



Theodore Danziger, proudly displaying the redfish he caught in Grand Pass, between Grand Terre and Grand Isle.

part of Jefferson Parish. Going south from New Orleans, the name is encountered at several points. First, there is the village of Barataria, about sixteen miles south of the city, which in 1930 had a population of 650. Then follows Bayou Barataria, Barataria Bay and Barataria Lighthouse on Grande Terre Island. During the first quarter of the nineteenth century these islands and bayous formed the rendezvous of a band of smugglers and pirates led by Jean and Pierre Lafitte. They had a fortified camp on Grande Terre Island and another at Lafitte, from which points they preyed upon shipping in the Gulf of Mexico.<sup>133</sup> When in 1814 New Orleans was threatened by British forces, Jean Lafitte was offered a complete pardon, command of a British frigate and 30,000 dollars in gold if he would join the English against the United States. His refusal, followed by his gallant conduct in the Battle of New Orleans, won for them all the designation of "patriots". There is a legend among the natives of Barataria that in the Lafitte Cemetery on Bayou des Oies, five miles from Lafitte, not only Jean Lafitte, but John Paul Jones and Napoleon Bonaparte all lie buried.<sup>134</sup>

Cheniere Caminada, an island in the Gulf, probably perpetuates the memory of Francisco Caminada, who owned land at the site of the Tchoupitoulas Indian settlement above New Orleans, as well as a tract of land below the city.<sup>135</sup> In 1842 a sufficient number of people lived there to warrant representation on the police jury. Joseph Cossa was chosen as a member from Cheniere Caminada. He accepted the appointment with the proviso that he should not be expected to attend all the sessions of the body, since his district was seventy-five miles from the courthouse at Lafayette. He promised, however, to be present whenever necessary, and asked the police jury to treat him with the same indulgence it had extended to his predecessor, Mr. Fauchier, who had not attended a single meeting.<sup>136</sup> On October 1, 1893, a terrific storm struck the coast of Louisiana, which because of its center of violence on the

1903

## LaBRUYERE'S QUALITY STORES

1939

36 YEARS CATERING TO THE PUBLIC  
3 BROTHERS 3 STORES  
—One Policy—  
"THE BEST FOR LESS"

## HOPE HAVEN DAIRY

Milk from National Honor Roll Herd

UPtown 8192

MARRERO, LA.

## BOULEVARD HARDWARE STORE

C. O. CHERBONNIER, Prop.

SHERWIN-WILLIAMS PAINTS

Barataria Blvd.

UPtown 7237

Marrero, La.

## SIDNEY GAUTHIER

*Fancy and Staple Groceries, Meat Market, Soft Drinks,  
Notions, Dry Goods*

UPtown 9275

HARVEY

## Commercial Solvents Corporation

DISTILLERS OF FINE ALCOHOL

TERRE HAUTE, INDIANA

Executive Offices: 230 Park Avenue, New York, N. Y.

## ROSENSTOCK'S

—•—  
WESTWEGO, LA.

island, has been called the "Cheniere Caminada Storm". The president of the Jefferson police jury, L. H. Marrero, advised that body to appropriate the sum of \$500 for the relief of storm victims. He reported that from the best information he could gather, some three hundred houses were blown down, and and that something like 1200 out of a population of 1800 had lost their lives. The sum asked for was appropriated.<sup>137</sup> Some of the survivors took refuge at what is now Westwego. Pablo Sala, a resident of the town, donated to each of the survivors who wished to locate there a plot of ground, and also provided a cemetery for them. For a while the settlement was known as Salaville. Later the name was changed to Westwego, and Pablo Sala is remembered today only in Sala Avenue, the main street of the town.<sup>138</sup>

In 1834 a tract of land on Grande Terre, in the lower end of Barataria Bay, was purchased by the state from Etienne de Gruy and ceded to the United States as a fort site.<sup>139</sup> The legislature decreed that jurisdiction over the land would revert to the state if the fort were allowed to fall into decay, or be rendered useless for a period of seven years.<sup>140</sup> The fort was completed in 1850 and named Fort Livingston. It was not garrisoned after the Civil War, and was partially destroyed in the Cheniere Caminada hurricane of 1893. Today only the ruins of the brick walls and the rusted cannon remain.<sup>141</sup>

An event of great local interest is the annual pirogue race, held at Lafitte each May. Inaugurated in 1936, the race serves to perpetuate the traditions surrounding this Indian mode of travel, and to pay tribute to the skill of the men of the bayous in the building and handling of these little craft. The contest is staged on Bayou Barataria, from Kammer's Store to Fleming Park, a racing course of four and seven-tenths miles. Here hundreds of people gather to watch the race, in which from seventy-five to a hundred entrants vie with each other for first place. For four years now the record, thirty-five minutes and nine seconds, has been held by young Adam Vincent Billiot, a citizen of Jefferson Parish.<sup>142</sup>

At the end of the parish lies Grand Isle, with the waters of Rigaud Bay on one side, and the rolling surf of the Gulf of Mexico on the other. It is said that this island was a stronghold of Jean Lafitte, and that many of the inhabitants today are descendants of his band. Whatever their ancestry, the people speak a French patois. They farm enough to produce food, and fish as a means of livelihood. As a sideline to fishing, they act as guides for visitors on fishing expeditions. Each year, late in August, Grand Isle attracts many contestants to the annual Tarpon Rodeo. The first rodeo was sponsored in 1927 by John C. Donovan, a fishing enthusiast of New Orleans. Since that time the fame of the event has spread until at present some of the best fishermen from the Gulf Coast, and even the East Coast and the Great Lakes, take part in the sport.<sup>143</sup>

#### SUMMARY

The keynote of Jefferson Parish is Progress. In spite of the set-back occasioned by the annexation of its earliest towns, the parish has gone forward in population, industry and wealth, because it has the sound basic materials from which these things emanate. Nature has been kind to Jefferson. There is wealth in her soil, capable of almost unlimited expansion. Beneath the ground "black gold" in quantities yet untouched awaits future

**LEON NUNEZ'S DANCE HALL AND  
BARROOM**

LEON NUNEZ, Prop.

**DANCING EVERY SATURDAY NIGHT**

Tasty Sandwiches, Sea Foods, Drinks of All Kind

**LAFITTE****E. R. SCHIEFFLER**

Buyer of Furs and Alligator Hides

**SPEED BOATS FOR RENT****LAFITTE, LA.****FLEMING CANAL STORE**

FELIX T. FAVALORO, Prop.

**GENERAL MERCHANDISE—FURS—ALLIGATOR HIDES****SEA FOODS**

Phone Barataria 7313

**MEYER'S****LADIES', MEN'S AND CHILDREN'S READY TO WEAR****MARRERO, LA.****RITE-WAY SERVICE STATION**

BOB FARRINGTON, Prop.

**GULF PRODUCTS**

Barataria Boulevard and Westwego Highway

Marrero, Louisiana

**DUFOUR BROTHERS**

MCTLE.

**GENERAL MERCHANDISE**

UPtown 9296

**MARRERO, LA.**

development. Even the water and marshes contribute their share to the general prosperity. The climate is sub-tropical, with few extremes of either heat or cold. There is space for industry, for homes and gardens and for children. There are thriving towns alive with the hum of business, immense plants which furnish wealth and employment to the parish and its people, quaint villages, the unforgettable loveliness of winding bayous, and the long roll of surf against its southern shores. For everything produced in the parish there are ocean-going ships and fast trains to reach the markets of the world, while next door half a million people offer a ready market for the things Jefferson has to sell. In addition to all this, the parish has an industrious, wide-awake people, and a sound business government. It is not only a good place to live now, but one which furnishes a guarantee of continued progress.

1. The Historical Records Survey, Division of Professional and Service Projects, Works Progress Administration, 622 Canal Bank Bldg., New Orleans, Louisiana.
2. *Louisiana Acts*, 1825, p. 108, hereafter cited as *La. A.*
3. B. F. French, *Historical Collections of Louisiana*, New York, 1846-53, 5 vols., I, pp. 25-50, 85-193.
4. Binger Hermann, *The Louisiana Purchase*, Washington, Government Printing Office, 1900, pp. 12-35.
5. *Orleans Territorial Acts*, 1805, XXV, p. 144, hereafter cited as *Or. Terr. A.*
6. Robert Dabney Calhoun, "The Origin and Early Development of County-Parish Government in Louisiana," in *Louisiana Historical Quarterly*, XVIII (1935), pp. 56-160.
7. *Or. Terr. A.*, 1807, I, p. 2.
8. *Constitution of 1812*, sec. 2, hereafter cited as *Const.*
9. Heloise H. Cruzat, "Documents Concerning Bienville's Lands in Louisiana, 1719-1737," in *La. Hist. Q.*, hereafter cited as Cruzat, "Documents Concerning Bienville's Lands," X (1927), pp. 5-24; Wilton P. Ledet, "The History of the City of Carrollton," in *La. Hist. Q.*, XXI (1938), pp. 220-223, hereafter cited as Ledet, "History of City of Carrollton."
10. Meloney C. Soniat, "The Tchoupitoulas Plantation," in *La. Hist. Q.*, VII (1924), pp. 309-315; also, personal interview, Mr. Thomas E. Furlow, Jr., with Mr. Meloney C. Soniat, May 1939.
11. *Jefferson Parish Yearly Review*, 1938, p. 205.
12. Kathryn C. Briede, "A History of the City of Lafayette," in *La. Hist. Q.*, XX (1937), p. 908, hereafter cited as Briede, "History of City of Lafayette."
13. Briede, "History of City of Lafayette," p. 906; *American State Papers, Public Lands*, selected and edited under the authority of Congress, Washington, 1832-1861, 8 vols., II (1834), pp. 278, #330, 279, #366; Henry C. Castellanos, *New Orleans As It Was*, New York, 1895, p. 149.
14. *Public Lands*, II, p. 268, #142.
15. Briede, "History of City of Lafayette," p. 913.
16. Briede, "History of City of Lafayette," pp. 913-916, 924, 925; Castellanos, *New Orleans As It Was*, pp. 324, 337, 338.
17. *La. A.*, 1833, pp. 144-147.
18. James A. Renshaw, "Lost City of Lafayette," in *La. Hist. Q.*, II (1919), pp. 47-48, hereafter cited as Renshaw, "Lost City of Lafayette;" *The Ordinances and Resolutions of the City of Lafayette Now in Force*, compiled by order of the Board of Council, Lafayette, Dec. 1, 1851, pp. 3-12, 32-37.
19. Briede, "History of City of Lafayette," p. 931; *La. A.*, 1844, #69; *La. A.*, 1848, #198.
20. *La. A.*, 1847, #140; Renshaw, "Lost City of Lafayette," p. 48; *Const.*, 1852, sec. 8.
21. Renshaw, "Lost City of Lafayette," pp. 48, 54, 201.
22. *La. A.*, 1846, #148; *La. A.*, 1850, #93.
23. *La. A.*, 1870, E. S. of 1st L., #7.
24. Meloney C. Soniat, "The Faubourgs Forming the Upper Section of the City of New Orleans," in *La. Hist. Q.*, XX (1937), pp. 205-207.
25. Soniat, "The Faubourgs of New Orleans," pp. 209, 210; William Williams, "The History of Carrollton," in *La. Hist. Q.*, XXII (1939), pp. 193-195.
26. Cruzat, "Documents Concerning Bienville's Lands," p. 540; *Public Lands*, II, p. 279, #351, p. 121, #194.
27. Ledet, "History of the City of Carrollton," pp. 224, 225; Soniat, "The Faubourgs of New Orleans," p. 208; William Williams, *The Centennial of the City of Carrollton*, New Orleans, 1876, pp. 7, 8, hereafter cited Williams, *Centennial of City of Carrollton*.
28. Ledet, "History of City of Carrollton," p. 227; Williams, *Centennial of City of Carrollton*, pp. 9-12; *The Carrollton Sentinel*, Dec. 27, 1873.
29. *La. A.*, 1845, #91; *La. A.*, 1859, #277.
30. *La. A.*, 1872, #2.
31. Williams, *Centennial of City of Carrollton*, pp. 13-15; Ledet, "History of City of Carrollton," pp. 231, 267, 268.
32. *The Carrollton Sentinel*, Dec. 27, 1873; *The Jefferson Sentinel*, Dec. 8, 1875, Aug. 12, 1876.
33. *La. A.*, 1833, pp. 8-15.
34. Soniat, "The Faubourgs of New Orleans," pp. 209-210; *La. A.*, 1840, #79.
35. Ledet, "History of City of Carrollton," pp. 276-278.
36. *La. A.*, 1825, p. 108, secs. 1-10.
37. *La. A.*, 1834, p. 15, secs. 1, 2.
38. *La. A.*, 1836, #82, sec. 1.
39. *La. A.*, 1842, #80, secs. 1-5.
40. *La. A.*, 1856, #55, #138.
41. *La. A.*, 1857, #175; *La. A.*, 1858, #13.
42. *La. A.*, 1858, #147, secs. 1-6.
43. *La. A.*, 1859, #177, secs. 1, 2.
44. *La. A.*, 1860, #64, secs. 1-9.
45. Jefferson Parish Police Jury, "Minute Book," III (1858-1870), pp. 258, 270, hereafter cited "Minute Book."
46. "Minute Book," III, p. 296.
47. *La. A.*, 1861, #185, secs. 1-3.
48. Picayune, New Orleans, Aug. 19, Oct. 28, 1868; John Rose Ficklen, *History of Reconstruction in Louisiana (Through 1868)*, Baltimore, 1910, p. 209; *La. A.*, 1868, #74, #175; *La. A.*, 1869, #44; *La. A.*, 1870, #41.
49. *La. A.*, 1877, E. S., #35.
50. "Minute Book," V (1879-1888), pp. 15, 16, 19.
51. *La. A.*, 1871, #97, sec. 1.

## MERITA BREAD and CAKES

Fresh at Your Grocer Daily

**AMERICAN  
BAKERIES CO.**  
3101 Tulane Avenue  
Made in New Orleans

## Geo. B. Matthews and Sons, Inc.

NEW ORLEANS, LA.

Manufacturers of  
Horse and Mule Feeds  
Dairy Feeds - Poultry Feeds  
and Mashers  
Near Girod and South Liberty Streets  
RAYmond 6975

## Stauffer, Eshleman & Co., Ltd.

Wholesale Hardware

## Automobile Tires and Tubes

511 Canal St. MAin 6771

## Ozone Company, Inc.

Ozone and Mountain Valley  
Mineral Waters

Perfection Distilled Water  
Paper Cups

Press and Marais Streets

CRescent 1101 New Orleans, La.

## SOULÉ COLLEGE

All Business Subjects Taught

Personal instruction. Day and  
Night Sessions. Open the Entire  
Year. You may enter at any time.

Placement Bureau assists gradu-  
ates in getting located. Send for  
interesting additional information.

"Soulé Students Succeed"  
1410 Jackson Ave. New Orleans

## Bloodworth, Grasser & Dessauer, Inc.

GENERAL INSURANCE

812 Union Street

Telephones:

RAYmond 0317, 0318

CEdar 1859 ALgiers 1176-W

David J. Dessauer Eug. A. Grasser  
Jos. Thiebaud

## SEE US FOR A LOW COST EASILY MET LOAN! A YEAR TO PAY

Get	Pay Back	Weekly Payment
\$ 45	\$ 50	\$1.25
54	60	1.50
90	100	2.00
135	150	3.00
180	200	4.00
225	250	5.00
270	300	6.00

M. J. McMAHON, President  
J. B. LEVY, Sec.-Treas.

**UNITY PLAN**  
FINANCE COMPANY, INC.  
825-27 PERDIDO ST.  
RA 1267

## WESTERN UNION TELEGRAPH CO.

Inexpensive Telegrams For  
All Occasions

J. C. JACKSON

Superintendent

RAYmond 9661

52. *La. A.*, 1873, #15.
53. *La. A.*, 1876, #59, secs. 1-5.
54. *La. A.*, 1884, #92; "Minute Book," V, p. 141.
55. *La. A.*, 1884, #93.
56. *La. A.*, 1884, #94.
57. *La. A.*, 1886, #20; *La. A.*, 1890, #119.
58. *La. A.*, 1894, #161.
59. *La. A.*, 1908, #279; *La. A.*, 1934, 3rd E. S., #22, sec. 3; *Roster of Officials*, p. 73.
60. *La. A.*, 1928, E. S., #8.
61. *Or. Terr. A.*, 1811, XXXVI, sec. 3.
62. *La. A.*, 1829, #23; *Revised Statutes*, sec. 2727; *Const.*, 1852, art. 6; *Const.*, 1864, arts. 8, 18; *Const.*, 1879, art. 22; *Const.*, 1898, art. 24; *Const.*, 1915, art. 24; *Const.*, 1921, art. III, sec. 9.
63. *La. A.*, 1894, #94.
64. *Opinions and Reports of the Attorney General of the State of Louisiana from April 1, 1934, to April 1, 1936*, p. 852.
65. *La. A.*, 1825, p. 108.
66. *La. A.*, 1853, #103; *Const.*, 1852, title 2, sec. 8.
67. *La. A.*, 1858, #147, sec. 6.
68. *The Jefferson Sentinel*, Jan. 15, 1876.
69. "Minute Book," V, pp. 125-127.
70. "Minute Book," VI (1889-1895), pp. 86, 87, p. 110.
71. Ledet, "History of City of Carrollton," p. 251.
72. *La. A.*, 1906, #61.
73. *La. A.*, 1867, #80, #123; *La. A.*, 1870, #7.
74. "Minute Book," VI, pp. 111, 128, 129, 132, 169, 228, 239.
75. *Council Series of the City Council*, New Orleans, 1892, #6105.
76. *La. A.*, 1824, p. 68.
77. *La. A.*, 1827, p. 156; *La. A.*, 1830, p. 54.
78. *Revised Statutes*, 1852, p. 59.
79. *Times Picayune*, Feb. 9, 1939; "Minute Book," XIII (1935-39), ord. #700.
80. Fifth Census of the United States, *Population* (1820), pp. 33-35.
81. Seventh Census of the United States, *Population* (1850), p. 473; Eighth Census of the United States, *Population* (1860), p. 194.
82. Ninth Census of the United States, *Population* (1870), I, p. 34; Tenth Census of the United States, *Population* (1880), p. 194.
83. Fourteenth Census of the United States, *Population* (1920), III, p. 395.
84. Fifteenth Census of the United States, *Population* (1930), III, pt. 1, p. 982.
85. *Statement of the Taxes of 1877, Poll Taxes and Licenses of 1878*, Printed for the Convention, New Orleans, 1879, p. 9.
86. Department of Commerce and Industry, *Louisiana's Resources and Purchasing Power*, 1938, p. 166, hereafter cited *Louisiana's Resources and Purchasing Power*.
87. Jefferson Parish "Assessment Roll," 1938.
88. *Louisiana's Resources and Purchasing Power*, p. 166.
89. Alice Fortier, *Louisiana*, Madison, Wis., 1914, 3 vols., II, p. 149, hereafter cited as Fortier, *Louisiana*.
90. *Jefferson Parish Yearly Review*, 1938, p. 163; Department of Agriculture and Immigration, *Louisiana*, 1925, p. 176, hereafter cited as *Louisiana*.
91. *Louisiana's Resources and Purchasing Power*, p. 166.
92. Z. R. Pettet, *Louisiana Statistics by Parishes*, Washington, 1935, p. 19; *Jefferson Parish Yearly Review*, 1938, pp. 163, 165, 167.
93. *Jefferson Parish Yearly Review*, 1937, p. 127; 1938, p. 169.
94. *Jefferson Parish Yearly Review*, 1938, p. 169.
95. *Louisiana*, p. 177; Department of Commerce and Industry, *Do You Know Louisiana*, 1938, p. 130, hereafter cited as *Do You Know Louisiana*.
96. *Jefferson Parish Yearly Review*, 1938, pp. 53-73.
97. *Do You Know Louisiana*, p. 130.
98. *Jefferson Parish Yearly Review*, 1938, pp. 5-7, 37-49.
99. *Jefferson Parish Yearly Review*, 1938, p. 9.
100. *Louisiana's Resources and Purchasing Power*, p. 167.
101. "Minute Book," I (1834-1843), p. 3; V, pp. 83, 208; VI, p. 57.
102. "Minute Book," III, pp. 246-248; V, pp. 72, 86.
103. "Minute Book," X (1918-1924), p. 142; XI (1924-1929), p. 79.
104. "Minute Book," XII, p. 150.
105. Information supplied by Department of Public Welfare of Jefferson Parish.
106. *La. A.*, 1834, p. 15; "Minute Book," X, p. 265; XI, p. 1.
107. *Times-Picayune*, Sept. 16, 1932; *Item-Tribune*, April 24, 1927.
108. *Times-Picayune*, May 24, 1933.
109. *Times-Picayune*, Sept. 6, 1932.
110. "Minute Book," IX (1912-18), p. 436.
111. "Minute Book," XII (1930-35), pp. 6, 245.
112. *La. A.*, 1821, p. 62; *La. A.*, 1827, p. 80; *La. A.*, 1833, p. 141.
113. *Const.*, 1845, arts. 133, 134.
114. Briede, "History of City of Lafayette," p. 935.
115. *Jefferson Parish Yearly Review*, 1938, pp. 133, 137, 141.
116. Information from an official of Jefferson Parish.
117. *Times-Picayune*, Jan. 25, 1937.
118. *La. A.*, 1873, #71.
119. *Jefferson Parish Yearly Review*, 1938, pp. 203, 204.
120. *Jefferson Parish Yearly Review*, 1938, pp. 206, 208.
121. *Jefferson Parish Yearly Review*, 1937, p. 115.
122. Castellanos, *New Orleans As It Was*, p. 327.
123. Louisiana Highway Commission, *Know Louisiana*, Baton Rouge, 1933, p. 42, hereafter cited as *Know Louisiana*.
124. *Jefferson Parish Yearly Review*, 1938, pp. 115, 119.
125. Captain Horace H. Harvey, "The Destrehan-Harvey Intracoastal Canal," in *Jefferson Parish Yearly Review*, 1937, pp. 83, 85, hereafter cited as Harvey, "The Destrehan-Harvey Intracoastal Canal."
126. "Destrehan's Slave Roll," in *La. Hist. Q.*, VII (1924), p. 302.
127. Harvey, "The Destrehan-Harvey Intracoastal Canal," pp. 86-97.
128. Norman M. Walker, "The Geographical Nomenclature of Louisiana," in *The Magazine of American History*, X, pp. 211-222.
129. By proclamation of Gov. L. E. Hall, Aug. 20, 1913.
130. *La. A.*, 1916, #2.
131. *Jefferson Parish Yearly Review*, 1938, pp. 192, 193.
132. William Allan, *Life and Work of John McDonogh*, Baltimore, 1886, 64 ff; *Times-Picayune*, May 9, 1915; Lane C. Kendall, "John McDonogh—Slave Owner," in *La. Hist. Q.*, XVI (1935), pp. 125-134.
133. *Jefferson Parish Yearly Review*, 1938, pp. 196, 204.
134. William A. Read, *Louisiana-French*, Baton Rouge, 1921, p. 188, hereafter cited as Read, *Louisiana-French*.
135. *The New Louisiana*, State Administration, Inaugural Publication, Baton Rouge, 1936, p. 87; Charles Gayarre, "Historical Sketch of Pierre and Jean Lafitte, the Famous Smugglers of Louisiana, 1809-14," in *The Magazine of American History*, X, pp. 284-298, 389-396; Lyle Saxon, *Lafitte the Pirate*, New York, 1930; Gaspar Cusachs, "Lafitte the Louisiana Pirate and Patriot," in *La. Hist. Q.*, II (1919), pp. 426, 427; Castellanos, *New Orleans As It Was*, pp. 304-310.
136. Read, *Louisiana-French*, pp. 25, 35, 189.
137. "Minute Book," I, p. 322.
138. "Minute Book," VI, pp. 329, 330.
139. *Jefferson Parish Yearly Review*, 1937, pp. 157, 158.
140. Fortier, *Louisiana*, II, p. 149.
141. *La. A.*, 1834, p. 105.
142. *Know Louisiana*, p. 80.
143. *Times Picayune*, May 15, 1939, *Do You Know Louisiana*, pp. 292, 293.
144. *Do You Know Louisiana*, pp. 281, 282, 308-311.

MERIT SELLS

**DR. TICHENOR'S  
ANTISEPTIC**

Canal, Common, Fulton  
and Front

NEW ORLEANS

**FRANZ BROS.**

COOPER TIRES

1700-02 St. Charles Avenue

600 N. Claiborne Avenue

NEW ORLEANS

Jefferson Highway

Southport

PURINA FEEDS

—in the—

CHECKERBOARD BAG

Dairy Feed - Poultry Feed  
U. S. Approved Baby Chicks  
Oakes Poultry Supplies

**Durham's Feed Store  
& Hatchery**

501 N. Claiborne Phone GAlvez 3131

We Deliver in Jefferson Parish

**Dunlap Sporting Goods  
Co., Inc.**

138 Carondelet St.

New Orleans, La.

*"It Pays to Play"*

**Foundation Finance  
Co., Inc.**

Various Loan Plans and Rates,  
Adjusted to Borrowers' Needs  
and Qualifications

411 Whitney Bldg.

RA. 5279

**Leonard Krower &  
Son, Inc.**

IMPORTERS AND EXPORTERS  
WHOLESALE

*Diamonds, Watches, Jewelry,  
Clocks, Silverware, Art Goods,  
Novelties, Etc.*

NEW ORLEANS, U. S. A.

P. O. Box 330

**KETCHUM & SMITH**

For Better Optical Service

OPTICIANS

129 Baronne Street

RAYmond 8429

New Orleans

**CANAL OIL CO., INC.**

Crude Oil

Production

In Louisiana

# Metairie Steps Forward

JAMES A. WOBBE

Newspaper Writer

Metairie, in the Eighth Ward of Jefferson Parish, has long been known as the most beautiful suburb in the metropolitan area of New Orleans. Noted for its beautiful homes and gardens, it has attracted more and more builders every year.

But, while Metairie was almost perfect, its residents could not quite boast that they enjoyed every city convenience, for while there were electric lights, gas, paved sidewalks and a much more spacious life than they could enjoy in the city, they were still forced to use cess pools and septic tanks for sewage disposal.

To fill Metairie's need for sewage disposal was not easy. From time to time committees of ways and means were formed. One proposal after another was considered—and rejected. The solution seemed as far away as ever.

For Metairie had a problem. Its location just above New Orleans made it impossible to dump sewage into the Mississippi River, for the sewage would pollute the water taken in by the New Orleans Purification Plant.

One of the many magnificent homes in Farnham Place, Metairie, one of Jefferson Parish's most beautiful subdivisions.



## Chalmette Petroleum Corporation

Refiners, Distributors and Exporters of

**Petroleum and Its Products**

American Bank Building

Refinery and Export Station  
CHALMETTE, LA.

Cable Address: "CHAPETCO"

Code: BENTLEY'S

Marking Devices and Supplies  
Since 1867  
Badges—Bronze Tablets

**ED. SMITH'S WORKS**  
**STENCIL** RA. 2129  
RUBBER STAMPS. STENCILS. SEALS  
**426 CAMP** NEAR POYDRAS

NEW ORLEANS, LA.

## Cambias Office Equipment Company

SALES, RENTALS, SERVICE

Distributor

Woodstock Typewriters  
Allen Adding Machines

RA. 0952 328 Carondelet St.

New Orleans, La.

## BOND BREAD BAKERS

The Logical Way to Banish Rust Is  
to Use "ARUSTCO" Paint

"ARUSTCO" Paint is more economical, as it will cover practically twice the surface of ordinary coatings.

Practical Tests Have Proven  
"ARUSTCO" Quality

## Anti-Rust Paint Co.

510 Felicity St. Jackson 1129  
NEW ORLEANS

DRINK AND ENJOY

## "LIPTON TEA"

"The Finest the World Produces"

THOMAS J. LIPTON, INC.

## BARTLETT CHEMICALS

INCORPORATED

Industrial Chemicals  
Insecticides

923 Tchoupitoulas St.  
RAYMOND 5144  
NEW ORLEANS, LA.

## JOS. T. OWIN

GOLD AND SILVER REFINER  
AND ASSAYER

Manufacturer of Plate, Wire and  
Solder for Jewelers and Dentists

Highest Cash Prices for Old Gold,  
Silver and Platinum

309 Bourbon St. RAYMOND 2624  
New Orleans



**SEWERAGE DISTRICT NO. 1. OF THE PARISH OF JEFFERSON**

**Members, left to right: John J. Holtgreve, Secretary; Ernest Riviere, Chairman, and Louis E. Gruber.**

If sewage should be shunted into Lake Pontchartrain, it would pollute the fishing grounds and make the lake impossible for bathers.

About this time, Sewerage District No. 1 was created, its Board of Commissioners including Ernest Riviere, Chairman; John J. Holtgreve, Secretary; and Louis E. Gruber.

"We had conferences with New Orleans city authorities," explained Mr. Holtgreve, "and thought for a while of running a sewer line from Metairie through the city to open in the river below the purification plant. But we had to discard that idea. The sewer line alone would have cost us \$500,000. It was too expensive.

"Finally, we hit on the right answer—a sewage disposal plant and complete sewerage system of our own. That's what we're building today, a magnificent piece of work, constructed not only for present-day needs, but with an eye to the future."

Today, the laying of sewer pipes is 25 per cent complete, and bids were recently let for the erection of a disposal plant, a plant almost unique in Louisiana. The entire system will be in operation by next spring, and then watch property values skyrocket.

Best of all, perhaps, is the bargain Metairie residents are getting. The completed project will cost \$1,050,000, but of this amount, the parish pays only \$600,000. The balance of the bill is being footed by Uncle Sam through a Public Works Administration outright grant.

■

**Carter, Perrin & Brian**

615 American Bank Bldg.

New Orleans, La.

■

For SALE or RENT  
Large and Small Factory  
Buildings

Gretna Industries, Inc.  
Holdings  
Gretna, La.

**Latter & Blum, Inc.,  
Agents**

919 Gravier St.

RA. 1311

**H. A. Thiberge Printing  
Co., Ltd.**

Stationers

Printers



County Record Books  
Office Supplies

510 Camp St.

New Orleans

**CENTRAL FINANCE  
COMPANY**

1815 CANAL ST.

AUdubon 1321

New Orleans

**F. W. MACKIE**

GROCER

Magazine and Gen. Pershing

UPtown 1604

New Orleans

**ARMOUR'S**

**OLD BLACK JOE**

**FERTILIZER**

**R. A. TANSEY**

*Realtor*

Specializing in West Bank  
Property

ALgiers 1422

518 Verret St.

NEW ORLEANS

**GROVER'S PLACE**



**SEA FOODS OF ALL KINDS**



EAST END  
JEFFERSON PARISH

It was in May a year ago that the board and others interested in the problem learned that Congress intended to appropriate more funds for PWA works. They lost no time. Plans were drawn up, and the formal application for the project submitted to Washington in July. Less than a month later, on August 25, the project was approved, and a PWA allotment made by the Treasury Department.

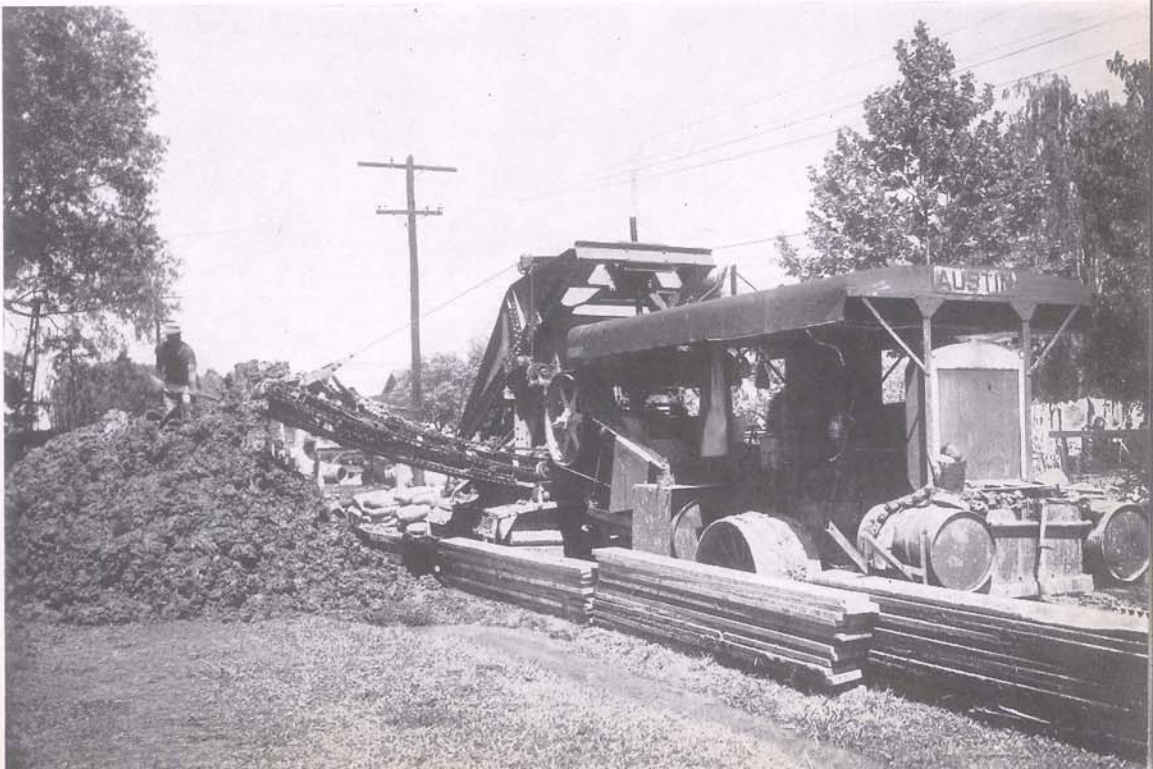
Preliminary work started in November. The contract was let to the Drainage Construction Company of Crowley, La., and on December 19, the actual digging began.

The firm of George P. Rice, consulting engineer, and best known sub-soil expert in the South, was employed to design the system, with the firm of Metcalf and Eddy of Boston, national authority on disposal plants, and John H. O'Neil, sanitary engineer of the State Board of Health, as consultants and advisers.

The engineers made studies of the populated areas of the ward, and finally fixed the boundaries of the sewage collection system as lying between the 17th St. Canal on the east, the Manson Plantation line on the west, the Illinois Central tracks on the south, and Metairie's Canal Street on the north. The sector taken is a series of steps on the map, running upward from west to east. In all, it comprises 2,500 acres of land and 8,000 residents.

It would never do, of course, to build a system simply for the 8,000 residents who live there today, for Metairie is growing; so the final plans called for a collection system designed to care for a population of 15,000, and a disposal plant which, with additional, comparatively inexpensive equipment, may be used to handle the sewage for the Seventh and Ninth Wards as well, when the growth of population in these wards makes this necessary. In

Machine digging trenches to lay sewer mains for Metairie's new sewerage system.



**WEINER'S**

The Westside's Leading  
Furniture Store

137 DELARONDE STREET

ALgiers 2424

**BERENSON'S  
Hollywood Theatre**

R. C. A.  
High Fidelity Sound

ABE BERENSON, Mgr.

Newton and Third Sts.      Gretna

For Any Form of  
INSURANCE  
See

**LYNN M. RODGERS**

620 SECOND STREET

ALgiers 2134

GRETNA

**Martin Butirich's  
RESTAURANT AND  
BLACK MARBLE CAFE**

LUNCHES, SHORT ORDERS AND  
DRINKS OF ALL KINDS

Private Dining Rooms

129-131 HUEY P. LONG AVE.

ALgiers 9103

GRETNA

STOP AT

**MIDWAY INN**

For the Best in Foods, Liquors  
and Service—Dancing

3322 FOURTH ST.

UPtown 7491

Harvey, La.

**BLUE LIGHT  
INN**

Second and Newton Sts.

ALgiers 9166

GRETNA

**FITZGERALD'S**

Sea Foods a Specialty

—o—

East End

Jefferson Parish

**THE FIRST NATIONAL  
BANK  
OF  
JEFFERSON PARISH**



Modernistic home in Metairie Club Gardens. This is another of Jefferson's beautiful homes.

other words, Metairie's disposal plant, when completed, will be capable of taking care of sewage from all of Jefferson Parish on the east bank of the river.

The engineers' comprehensive plan for the work is tersely stated in the outline specifications sent to the PWA:

"The work contemplated consists of construction of a complete sanitary sewer system, and includes main and lateral sewers, manholes, flush tanks, house connections from mains or laterals to property lines, automatic lift stations, cast iron force mains, and a sewage disposal plant complete with all necessary equipment. All materials used are to be first grade, and workmanship is to be of the best quality. The entire project is to be constructed in accordance with the best modern practice for each particular class of work."

The first problem involved was due chiefly to the character of the soil.

"When shovels excavate to the proper depth, the soil below seems perfectly solid," explained S. V. Applewhite, engineer for Mr. Rice, "and yet, when the men get down into the excavation, and tramp around, the earth gets sticky. It becomes a kind of gumbo. In digging, we found on occasion quick-sand at depths of five to fourteen feet below the surface, and nearly everywhere there was a mucky clay. In other spots, the land was firmer, and we turned up white sand and sea-shells, indicating that Metairie, like New Orleans, was at one time the floor of the sea."

The sewer lines being laid today range from eight to thirty-three inches in diameter, depending on areas dense or sparsely settled, and are made of concrete and cast iron. The disposal plant will be on the north side of the road, a mile from the lake, on Bonabel Canal, in the square bounded by Helios, Socrates and Demosthenes Streets.

## JAKE FALCONE'S GROCERY

J. FALCONE, Prop.

Fancy and Staple Groceries

417 Lafayette Ave.

GRETN A

## HARVEY LUMBER YARD

Louisiana Tidewater

Red Cypress

F. EBERHARDT, Owner

UPtown 4204

Harvey, La.

## Brunies' Restaurant

Established 1897

Joseph Baricev, Prop.

Chicken Dinners, Western Meats,  
Sea Foods Our Specialty

LUNCHES DAILY

Accommodations for Banquets  
and Private Parties

700 Second St. Phone AL. 9200  
Two Blocks from Gretna Ferry

## Gretna Furniture Co., Inc.

MACK C. WHITTINGTON, Mgr.

Complete House Furnishings,  
Radios, Washers, Refriger-  
ators, Rugs, Linoleum

Sunny Clime Furniture

G. E. Electrical Appliances

630 Front St. Gretna ALg. 2185

## Neeb's Hardware Store

HARDWARE AND PAINT

338 Lafayette Ave.

ALgiers 1988

GRETN A

## Super Service Station

S. S. CEMO, Prop.

TEXACO PRODUCTS

MARFAK GREASING

Electrical Repairs  
Auto Accessories—Brake Linings  
Batteries

ALL WORK GUARANTEED

4th and Delhonde Sts.

ALgiers 9194

GRETN A, LA.

## COYLE LINES

Weekly Sailings

New Orleans to Houston

Via

Intracoastal Canal

ALgiers 1700 New Orleans

Peter Baldwin, Prop.

## COMET INN, INC.

Sea Food Our Specialty

WINES AND LIQUORS

Popular Prices

Large Parking Space in Rear

Free Dancing

Phone CE. 9162

At one time, Metairie Road was a bayou, and to the present day the banks remain as two ridges on either side of the road. With these ridges dividing the sewerage district almost in half, the engineering problem of getting collected sewage to the plant can be readily understood.

The only solution was automatic lifts, or pumping stations, and engineers designed six of these, three on each side of Metairie Road. The lifts themselves will be underground, topped with manhole covers, properly ventilated and easily accessible, and will work automatically, depending upon volume of flow. As sewage is drained by gravitational pull away from the ridge on the south side, it will be directed to two of the pumping stations, and forced across the ridge to the north side through cast iron force mains. Once in the north side sewers, it will be speeded by other pumps on to the plant, on the outer fringe of the district.

The disposal plant is nearly unique in Louisiana. The only other plant like it is in Lake Charles, though there are many such plants in the Midwest, North and East. Board members believe the design a wise choice, for they are of the opinion that within the near future national legislation will be enacted prohibiting the pollution of navigable streams with sewage.

In the Metairie plant, sewage will be converted into odorless and salable dried fertilizer and clear, germless water by the "activated sludge" process, which uses bacteria made active by forced air to purify sewage.

The structure itself will be set back from the street, and its design reveals it as a thing of beauty. The grounds will be liberally landscaped, and, because of the chemical action involved, the plant will have no odor of sewage.

These paved sidewalks, gutter-bottoms and curbs in Metairie Lawn were laid under a Police Jury sponsored project.



Phill-up with Billups  
**Rose Petroleum Co.**

**YOUR FRIEND**

**We Sell for Less**  
 Jefferson Highway and  
 L. & A. R.R. Crossing

**Bowers Feed Store, Inc.**

**COAL**

*S. Claiborne and Southport*  
 Jefferson Parish

**METAIRIE BAKERY &  
 DELICATESSEN**

"Located in the Heart of Metairie"

621 Metairie Road Phone CEdar 9152

E. W. NAGEL, Prop.

Open Sundays—Full line of fresh breads,  
 cakes, pies and pastries—Daily delivery  
 in Metairie of 25c and over, between  
 9 A. M. and 5 P. M.

**PINES INN**

Shrewsbury Road and Airline Highway

Sandwiches and Drinks of All Kinds  
**Large Parking Grounds**

**METAIRIE MARKET**

**Choice Western Meats, Fruits,  
 Poultry, Vegetables and  
 Italian Products**

103 Focis St. CEdar 9139

A Clean Modern First Class Drugstore  
 "The Store that Brought Service and  
 City Prices to Metairie"

GEO. CLAREN

SARA CLAREN

**Claren's Pharmacy**

617 METAIRIE ROAD  
 CEdar 2535 CEdar 2536

Featuring All Kinds of Soda Fountain  
 Drinks and Sundaes

*DINE and DANCE*

**Bridge Circle Inn**

Foot of Huey P. Long Bridge  
 Westside

*We never close*

**Learn What Fairness Really  
 Means**

Buy Your Next Car From

**Kenner Chevrolet  
 Company**

**And Save**

L. P. Dominique Phone Kenner 9113



All the homes pictured on Beverly Drive, in Beverly Knoll, Metairie, were built in 1938 and the early part of 1939. This section attracts hundreds of new home owners every year.

The administration building will house a control room, a laboratory, an office for the manager, a general office, a board room, and a section apart from the offices devoted to shower baths and lockers for workmen.

Incidentally, engineers say the plant will require no highly technical staff. In fact, it will almost run itself, like some fabulous perpetual motion machine, by means of various chemical conversions.

The sewage comes into the plant under Helois Street to the main pumping station. It goes first to the screening and cutting mechanism, then passes out through a conduit to a preliminary settling tank, being metered, or measured, enroute to check the volume. The mass is permitted to settle for an hour and a half, at which time the liquid is 70 per cent free of solids.

The liquid is then drawn off into an "aeration tank," and the solids into two digestion tanks. "Aeration" of course, means air, and it is in this tank that the activated sludge process takes place, aided by an unusual piece of engineering ingenuity.

The digestive tanks with the sewage solids give off a gas of the same heating value as manufactured cooking gas. This gas is piped to an engine which operates a blower. The blower forces air into the aeration tank, thereby creating "aerobes", or a form of bacteria which lives only in the presence of oxygen. The aerobes act upon the sewage in the liquid to kill germs, and generally aid in the purification process. More simply stated, the air forced into the tank stimulates one group of bugs to make war on another group of bugs.

The liquid leaves this tank virtually pure, and goes into the final sediment vat, where whatever sludge left is drawn off and returned to work all over again in the aeration tank.

**RENE'S INN****Delicious Chicken Dinners**

1007 Jefferson Hy.

CEdar 9190

Jefferson Parish

*PETE FERRARA, Mgr.***HARAHAN SERVICE  
STATION**

HOOD

Tires and Tubes

Wrecker Service  
Kenner 9110**Abdo's Drug Store***Quality and Service**Jefferson Highway and Clay,**Kenner, La.*

Phones 207 and 9134

**DR. M. O. CAREY****341 Bermuda St.**

ALgiers 2266

ALGIERS

**ELLZEY STORES**

E. J. BLANCHARD, Mgr.

Phone ALgiers 9112

601 Lavoisier St.

GRETNA, LA.

**RAINBOW INN****LARGEST PARKING GROUND  
ON JEFFERSON HIGHWAY***We Serve the Best**With the Best of Service**Dancing—Mixed Drinks**Package Goods—Sandwiches*

On The Hill At Westwego

**E. Klause's New Beer  
Garden and Bar***Dancing Every Night: Free**Tasty Sandwiches, Hot Chilli and  
Ice Cold Drinks of all kinds**Come up and see us sometime*

Call WALnut 9225

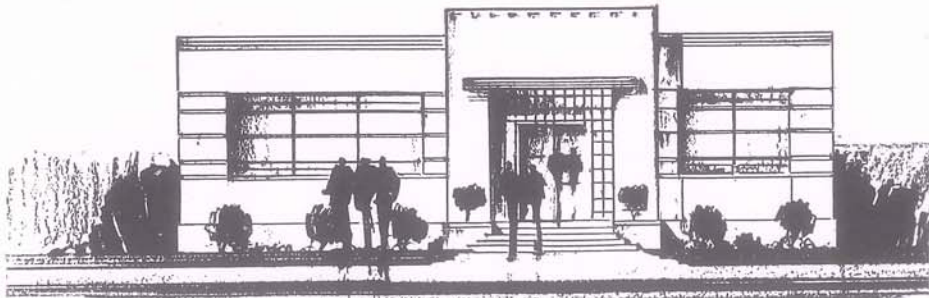
**THE  
SEABOARD  
REFINING CO., LTD.**●  
GRETNA

The final process is the chlorine contact chamber, and when the liquid leaves this chamber, it is as clear as drinking water, germ free, and contains less than five per cent sediment. It then moves out into Bonnabel Canal, and from there a mile to Lake Pontchartrain.

On the other hand, the solids sent to the digestive tanks remain there for 60 to 90 days, and by natural chemical action become purified and odorless. From the tanks, the solid matter is drawn off into drying beds, and spread to a depth of one foot. Underdrains carry off the remaining liquid back to the original settling vat, and the solids finally dry.

Pasadena, California, one of the show places of the nation, has a plant similar to the one being built in Metairie. Many of the newer residents there do not even know that it exists, for the city fathers of the California town have so beautifully landscaped their plant that it fits in perfectly with its surroundings.

Metairie plans to follow Pasadena's example, and to make its plant so beautiful that, while it adds a modern and much-needed service, it will not detract from Metairie's traditional beauty.



OFFICE, LABORATORY & PUMPING STATION  
FOR METAIRIE SEWERS  
GEORGE P. RICE  
CONSULTING ENGINEER

## WISSER'S CAFE AND GROCERY

334 HUEY P. LONG AVE.

Phone ALg. 9185

GRETNA, LA.

## WE-GO-INN

Sam Gilardi, Prop.

Dance and Dine Every Night

Sandwiches and Drinks of All Kinds

WAlnut 9209

On the Hill at Westwego Ferry

Landing, Westwego, La.

## CUTCHER CANNING CO.

Canners of Quality Shrimp

RAYmond 5059

UPtown 7032

Westwego, La.

## MELLING Cement Block Works

ED. MELLING, Prop.

BUILDING MATERIALS

ALgiers 2191

GRETNA

## SWANSON RESTAURANT

"Best Hard Crabs South"

•  
WEST END OF  
WEST END PARK

## SAMUEL BROS.

GRETNA

Largest Department Store on

West Bank of the River

CEdar 9148

Auto and Dining Room Service

## Messina's Suburban Inn

We Specialize in SPAGHETTI  
DINNERS and MUSSOLINI  
SANDWICHES

JEFFERSON HIGHWAY  
JEFFERSON PARISH

## MASSET'S TAVERN

*Sandwiches—Sea Foods*

*Wines—Liquor*

We Deliver

Phone CEdar 9161

Frisco Crossing and Metairie Road

Now in Our New Location

# East Jefferson Waterworks District No. 1

JOHN W. HODGSON

President

One of the most vital necessities in any community is an adequate, reliable supply of pure, safe water. The production, treatment and distribution of water for home consumption and industrial use is therefore an important factor. A water plant must be ready to serve all demands and anticipate all emergencies, twenty-four hours every day.

The East Jefferson Waterworks, serving the entire east bank of the Parish of Jefferson, is thoroughly equipped to provide such uninterrupted service.

The Mississippi River is an infallible source of supply. But while its waters show no appreciable evidence of pollution, they are slightly hard and contain a large amount of suspended matter. To assure pure, clean water, treatment is essential.

From the river, the water is pumped into the plant—a distance of approximately half a mile. The intake pump house is located on the river batture, and is equipped with three low-lift, electrically driven centrifugal pumps, having a combined capacity of seven million gallons per day. The water is delivered from these pumps through a twenty-inch, cast iron pipe into three



OFFICIALS OF EAST JEFFERSON WATERWORKS DISTRICT NO. 1.

Seated, left to right: Bruno Prager, Vice-President; Eugene J. Bender, Commissioner; Chas. A. Boutall, Chairman Finance Committee; Paul D'Gerolamo, Commissioner, and John W. Hodgson, President.

Standing, left to right: Edward A. Miller, Plant Superintendent; M. R. Tucker, Maintenance Superintendent; Leo W. McCune, Attorney; A. J. Wegmann, Treasurer and General Manager, and F. V. Draube, Secretary.



**The new administration building of the East Jefferson Waterworks District No. 1, which serves the east bank of Jefferson Parish.**

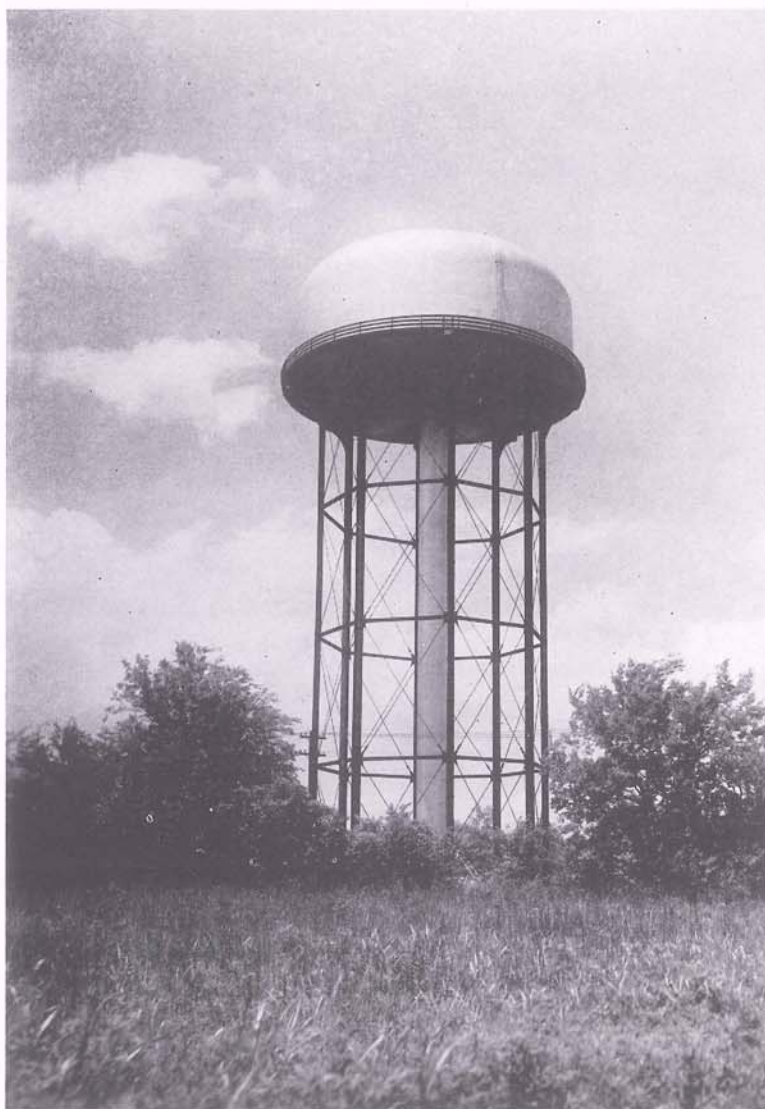
grit chambers, where the suspended matter is settled out. The water is then passed to two mixing chambers, of the combination baffle and agitator type, each driven by separate motors. Here the actual treatment of water is begun.

Hydrated lime and sugar sulphate of iron are fed from mechanical dry feed machines, the lime as a water softener, the sulphate of iron as a coagulant. The water is thoroughly mixed with these two chemicals to bring most of the suspended matter into small clusters known as floc, and then passed on to the four coagulation basins for the settlement of suspended matter. Each of these basins has a capacity of 650,000 gallons. As the water passes through these basins at low speed, the floc, with adherent suspended matter and impurities, precipitates to the bottom of the basins. The sludge which remains in the basins is periodically washed out and pumped back on the river batture through a twelve-inch discharge pipe.

The supernatant fluid is now ready for filtration. In the East Jefferson Waterworks there are four rapid sand filters, each having a capacity of one million gallons per day. The water is conveyed from the coagulation basins into and through the filters, which free it from all impurities. It is then pumped by low lift pumps into two storage reservoirs with a total capacity of three million gallons. These reservoirs are kept filled to insure an adequate supply.

Before this water is pumped into the distribution system, another precaution is necessary. The Louisiana State Board of Health requires that all water be chlorinated before it can be served to the public, in order to avoid any possible chance of impure, unsafe water entering the service mains. The chlorination equipment consists of two chlorinators, sufficiently large to supply a treatment of two parts per million gallons pumped. This equipment is more than sufficient for present needs.

The pumping plant is equipped with two service pumps, each having a daily capacity of 2,160,000 gallons, and two fire pumps, each having a daily



New Water Tower of East Jefferson Waterworks District No. 1.

capacity of 3,400,000 gallons. These four units are electrically driven. There is also one Diesel engine driven pump with a capacity of 3,400,000 gallons per day. The combined pumping capacity is 17,280,000 gallons daily, the major portion of which is reserve pumping capacity. The present plant capacity is 4,000,000 gallons of treated water per day, which is approximately three times greater than present demands.

The distribution system is composed of two elevated storage tanks and 122 miles of pipe lines. One tank, of 500,000 gallons capacity, is located in the rear of the plant. The other tank, of 100,000 gallons capacity, is located in Kenner. The larger tank maintains a maximum pressure of 61 pounds and a minimum pressure of 55 pounds, as this tank is floating on the lines. However, by valving off the effluent from the tower, a pressure of 85 pounds can be built

up with the fire pumps at the plant effluent. The main lines range in size from 20 inches leaving the plant to 6 inches in outlying districts. Fire protection is afforded the area by hydrants placed on all mains throughout the district and adequately spotted in built-up sections.

The new administration building, located on Jefferson Highway and Arnoult Road, maintains office hours from 8:30 A. M. to 4:30 P. M. each day except Saturdays, when the hours are from 8:30 A. M. to 12:30 P. M. The plant is manned day and night.

The district is administered by a Board of Commissioners, appointed by the Police Jury of the Parish of Jefferson and by the Governor of the State of Louisiana.

The members of the Board of Commissioners are: John W. Hodgson, Chas. A. Boutall, Eugene J. Bender, Bruno Prager and Paul D'Gerolamo.

The officers are: John W. Hodgson, President; Bruno Prager, Vice-President; Chas. A. Boutall, Chairman Finance Committee; F. V. Draube, Secretary, and A. J. Wegmann, Treasurer and General Manager; with Edward A. Miller, Plant Superintendent, and M. R. Tucker, Maintenance Superintendent.

Permission to visit the plant will be given to all desiring to avail themselves of this privilege. Visitors are welcome at any time during office hours. Complaints and information desired are given courteous and prompt attention. Call CEdar 2000 for office and CEdar 2539 for plant.

---

## SAXON

(Continued from Page 103)

One story has it that two brothers once were hunting frogs in the marshes. They were in separate pirogues and left each other for a while after selecting an eventual meeting place. As he went about his hunting, the elder brother heard a strange sound come to him across the water. The noise of fighting was followed by the sound of furious paddling. Hurrying to the meeting spot, he found the younger boy already there, panting and frightened. When the youngster recovered breath, he told of seeing a curious light. Having heard stories of the **feu follet** and not being superstitious, at least in a fearsome way, the boy had paddled boldly to the spot—to watch a luminous ball dance on the surface of the water. As he approached it, however, the ball ceased its dancing and flew straight at him. A little frightened by this time, the boy attempted to ward the strange thing off with a paddle, but each time he struck, the **feu follet** dodged, and returned to the attack. Finally, in a panic, the boy had picked up his paddle and fled. The ball of fire followed him for many yards; then after a while, fell away.

These are strange stories and customs, but then the bayou country is a strange land, which has retained its primitive simplicity in spite of its being just beyond the door of New Orleans.

# Jefferson Parish Waterworks District No. 2

**ED. E. FEITEL**  
President

That area between the city limits of Gretna and Westwego is served by the Jefferson Parish Waterworks District No. 2.

This waterworks serves not only the residents of the Fourth Ward and part of the Third Ward, and the largest manufacturing center of the parish, but also The Texas Company's oil field at Lafitte.

In order to meet all future demands and emergencies, a new 30,000 gallon water tower has been erected at Meyer's Lane in Marrero, bringing the plant's capacity to 1,500,000 gallons per day. The present average daily use is 750,000 gallons.

The personnel of the Board of Commissioners is: Ed. E. Feitel, President; Louis C. Fos, Vice-President; Joseph L. Sartis; Charles E. Boyd; A. J. Grefer, Secretary-Treasurer, and Ernest M. Conzelmann, Legal Adviser.



Jefferson Parish Waterworks District No. 2, plant and storage tank, Marrero.



## FROST

(Continued from Page 91)

Muskrat fur has been sold as "Hudson Bay Seal", and as such, was the winter fur coat of millions of American women in the North. Now it is sold under its own name of muskrat. In the trapping season of 1924-1925 Louisiana trappers brought in 6,236,165 muskrat pelts. In the boom days of the 1928-1929 trapping season, just before the great financial crash of the depression, the Louisiana muskrat pelt catch was 5,105,374, and the next year rose higher, to 6,269,566. But these days it stays around the 3,000,000 mark.

But boom days or depression days, the muskrat yearly pours a stream of cash into the pockets of Jefferson Parish and other Louisiana trappers. This season of 1938-1939 showed a general increase of some 12 per cent over the 1937-1938 season, says Armand P. Daspit, at the State Department of Conservation, though the final figures haven't yet come in.

All of which merely strengthens the hold of Mr. Fiber Zibethicus Muridae on his title and rank as one of the most valuable residents of Jefferson Parish. He has a standing there even stronger than that. They love a laugh in Jefferson Parish, and the muskrat has proved to them that he has a sense of humor.

Far down below Barataria dwells one old trapper who told the story on himself. He found muskrat traces near his trapping shack. But he couldn't locate the muskrat house. It puzzled him. At the end of the season, he moved his wooden shack to a new location.

"Dawg-gone!" he says. "What yo' t'ink I found? Dat muskrat, he's build his house right undeh my shack; right undeh de flo' wheah every night I'm sleepin' right on top of him!"

## Continental Can Co., Inc.

HARVEY, Jefferson Parish

NEW ORLEANS

Sales Office, GAlvez 4145

## New Orleans Stamp & Stencil Co., Inc.

GUS. W. SEIFFERT, President and Manager

Rubber Stamps, Stencils, Marking Devices of All Kinds

330 CAMP ST.

RAYmond 2960

NEW ORLEANS

Ask For Descriptive Catalog

## F. J. VILLARS & SONS

ROOFING CONTRACTORS

*"Villars Roofs Fool the Rain"*

GENUINE BANGOR SLATES—RU-BER-OLD ASBESTOS SHINGLES

609 Metairie Road

Phones CEdar 1212—1250

# Fourth Jefferson Drainage District

## SUB-DRAINAGE DISTRICTS 1-2-3-4

**JUSTIN F. BORDENAVE**

**Secretary-Treasurer**

Comprising that entire section of Jefferson Parish located on the east bank of the Mississippi River, the Fourth Jefferson Drainage District covers an area of 28,000 acres. Included in this area are factories, industrial sections, beautiful residential districts and fertile farm and dairy regions.

The Fourth Jefferson Drainage District is divided into:

Sub-Drainage District No. 1—comprising 2400 acres behind the town of Kenner.

Sub-Drainage District No. 2—a gravity drained district in the Southport area, containing 2000 acres.

Sub-Drainage District No. 4—comprising all of that land north of the Metairie Road from the Orleans Parish line to the upper line of Bonnabel Place, an area of 1800 acres, about half of which is used for homesites and farming.

Sub-Drainage District No. 3—comprising the remainder of the 28,000 acres included in the entire drainage district.

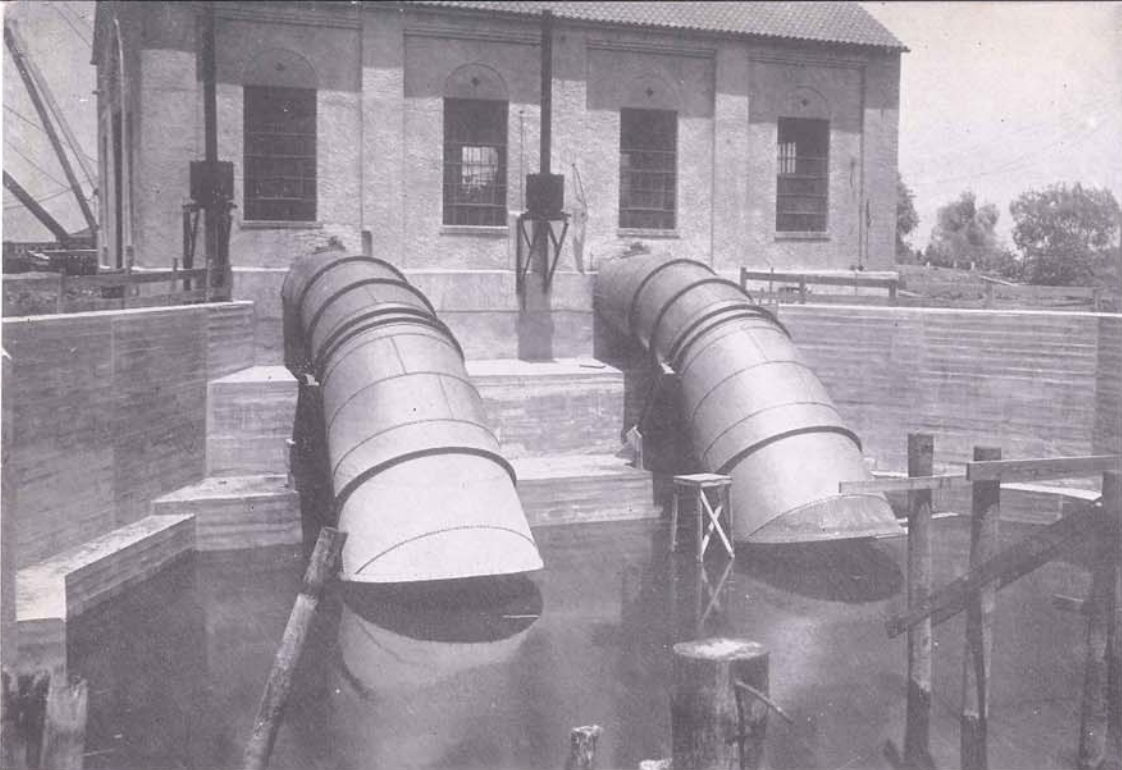
Since only a very small part of this land is gravity drained, the construction of four pumping plants was necessary. These plants were constructed on



### OFFICIALS OF FOURTH JEFFERSON DRAINAGE DISTRICT

Seated, left to right: Dan W. Eastman, Commissioner; John Bordes, President, and Robert Ottermann, Vice-President.

Standing, left to right: Frank H. Mayo, Commissioner; W. R. Toledano, Commissioner; Justin F. Bordenave, Secretary-Treasurer; Joseph A. McCaleb, Attorney, and Louis E. Breaux, General Foreman.



One of the four pumping plants of the Fourth Jefferson Drainage District, on the shores of Lake Pontchartrain.

the Lakeshore levee, about two miles apart, extending from the rear of Metairie to the rear of Kenner. These pumping plants are well equipped, with two Diesel engines, each connected to a lift pump, giving each plant a capacity of 125,000 gallons per minute.

However, due to soil erosion of the discharge side of Pumping Plant No. 1, a leak was sprung beneath the foundation. To cover these repairs, State Project No. 30003 was put into operation, the Works Progress Administration advancing the sum of \$54,532.17, and the Fourth Jefferson Drainage District the sum of \$25,459.99.

Begun on October 19, 1938, this project calls for the improvement of existing drainage canals and reconstruction of Pumping Station No. 1. To date several miles of our sixty-odd miles of canals have been cleaned, the excavation at the pumping plant has been completed, coffer dam and single sheet dam have been placed on both sides of the plant, the concrete flooring has been poured, and piling for intake side and interlocking steel sheet piling have been driven.

The balance of work at Plant No. 1 will include the driving of wood piling in floor basin for discharge side, a row of interlocking steel sheet piling, pouring of concrete slab for basin, the four wing walls for the intake and discharge basins, the building of bridge and screen on intake side, the removal of dams on both ends of the plant, cleaning the remaining canals and topping levee. The completion of this project will place the pumping plant in the rear of Metairie in first class condition, and assure the free flowing of all our large drainage canals.

On October 5th, 1937, State Project No. 20003 was put into operation, the Works Progress Administration advancing the sum of \$31,619.44, and the Fourth Jefferson Drainage District the sum of \$8,866.20, for clearing, grubbing, excavat-

# Second Jefferson Drainage District

ERNEST M. CONZELMANN

President

That part of Harvey lying on the west bank of Harvey Canal and the lower part of Marrero, 3000 acres in all, forms the Second Jefferson Drainage District. Included in this area are some of the largest manufacturing plants in the South, as well as many acres of fertile truck farms.

In this district, the past year has seen the completion of a WPA project in the amount of \$58,950.45, of which the WPA spent \$32,916.63, the Drainage Board \$26,033.82. Under this project, all existing canals were enlarged, all lateral canals were cleaned, and a shell road was built along First St. in Harvey, from U. S. Hwy. 90 to the Two-Mile Canal.

The pumping plant, at the confluence of Two-Mile Canal and Harvey Canal, has been enlarged. In addition to improvements to the building, new equipment has been added. A 54 inch Woods pump, driven by a 225 horse-power Fairbanks-Morse engine, has increased the plant's pumping capacity from last year's 130,000 gallons per minute to 195,000 per minute.

Since the large engines driving the water pumps must be started with air, the plant is also equipped with two Fairbanks-Morse 6 horse-power engines and compressors to pump air to start the engines. The air compressed by these engines is stored in tanks, so that the plant can begin operating as soon as possible in case of an emergency. Should such an emergency arise, the pumps can be started within seven minutes. The plant is manned twenty-four hours a day, the engineer and his assistant living in a house near the pumping plant.

The members of the board are: Ernest M. Conzelmann, President; D. H. Roussel, Secretary and Engineer. The commissioners are: Louis C. Fos, Onezphar Bernard and Evans Folse.

---

ing to the proper grade, and bringing to true cross-section all large drainage ditches in the district, and filling of the coffer dam at Pumping Plant No. 1. This project was completed February 13, 1939.

State Project No. 30427, amounting to \$46,964.00, the Works Progress Administration advancing the sum of \$40,114.00, and the Fourth Jefferson Drainage District the sum of \$6,850.00, for continuing surface drainage, is now in WPA headquarters in Washington, being reviewed for approval.

At the present time the total bonded indebtedness of the Fourth Jefferson Drainage District is as follows:

Sub-Drainage District No. 1	\$33,950.00 bearing 2 per cent interest
Sub-Drainage District No. 2	8,300.00 bearing 5 per cent interest
Sub-Drainage District No. 3	685,800.00 bearing 2 per cent interest
	2,010,960.00 bearing no interest
Sub-Drainage District No. 4	25,600.00 bearing 5 per cent interest

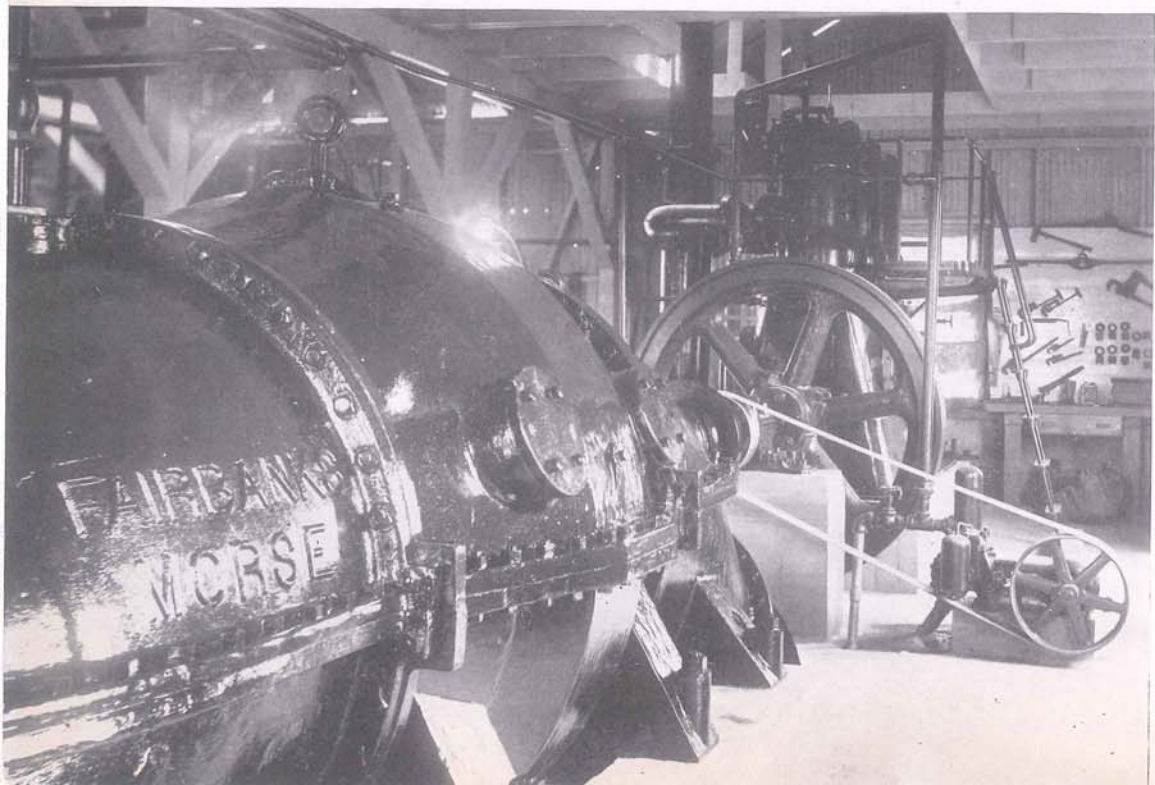
This makes a total sum of \$2,764,610.00 in current bonds, as compared with last year's total of \$2,788,110.00, a reduction of \$23,500 in interest bearing bonds.



Pumping plant of Second Jefferson Drainage District, draining Harvey and Marrero.



Type of engine used to drive water pumps at Second Jefferson Drainage District plant on Harvey Canal.





Facing across Bayou  
Barataria from Isle  
Bonne. On the other  
side of the bayou is  
Berthoud Cemetery,  
built on an Indian  
shell-mound.

# Table of Contents

	Page
Frontispiece .....	2
Foreword .....	3
Jefferson Parish Police Jury—Members and Officers.....	4
Police Jury Finances.....	5
W. R. TOLEDANO, President, Jefferson Parish Police Jury	
Officials .....	11
Jefferson Parish—Industrial Bright Spot.....	13
DON S. ELLIOTT, C. E., in Collaboration with E. S. PENNEBAKER, Manager, TP-MP Terminal Railroad of New Orleans	
Officials .....	37
Officials .....	39
Pictorial Section.....	41
Tropical Trappers' Fur Frontier.....	57
MEIGS O. FROST, International Writer	
Traditional and Romantic Jefferson.....	93
LYLE SAXON	
Progress in Education.....	105
LEM HIGGINS, B. A., M. A., Assistant Superintendent of Schools in Collaboration with EDWARD M. COMISKEY, President of the School Board	
Jefferson Parish School Board—Members and Officers.....	107
Officials .....	121
Lafitte Oil Field.....	123
R. C. STEWARD, Manager Louisiana Division, Producing Department, The Texas Company	

	Page
A Brief History of Jefferson Parish..... The Historical Records Survey	127
Metairie Steps Forward..... JAMES A. WOBBE, Newspaper Writer	185
East Jefferson Waterworks District No. 1..... JOHN W. HODGSON, President	199
Jefferson Parish Waterworks District No. 2..... ED. E. FEITEL, President	203
Fourth Jefferson Drainage District—Sub-Drainage Districts 1-2-3-4..... JUSTIN F. BORDENAVE, Secretary-Treasurer	205
Second Jefferson Drainage District..... ERNEST M. CONZELMANN, President	207
Index of Advertisers.....	212
Information .....	216



# Index of Advertisers

	Page		Page
<b>A</b>			
A. & P. Food Stores.....	118	Carey, Dr. M. O.....	196
Abdo's Drug Store.....	196	Carter, Perrin & Brian.....	188
Abele Brothers, Florists.....	172	Celotex Corp., The.....	28
Acme Marble & Granite Co.....	116	Central Finance Co.....	188
Alto Tourist Court.....	122	Chalmette Petroleum Corp.....	186
American Bakeries Co.....	182	Chase Brass & Copper Co., Inc.....	172
American Beverage Co., Inc.....	128	City Ice Co., The.....	164
American Coffee Co., Inc.....	182	Claren's Pharmacy.....	194
American Creosote Works, Inc.....	96	Clerc Lumber Co., Inc.....	152
American Distilling Co., Inc.....	122	Collins, J. C., Agent.....	152
American Heating & Plumbing Co., Inc.....	132	Colonial Golf & Country Club.....	148
American Iron & Machine Works Co.....	126	Comet Inn, Inc.....	192
American LaFrance & Foamite Pro- tection.....	172	Comiskey, James E., Co.....	168
American Printing Co., Ltd.....	8	Commercial Solvents Corp.....	178
Anti-Rust Paint Co.....	186	Concrete Products Co.....	92
Arctic Pure Ice Co.....	164	Continental Can Co., Inc.....	204
Armour Fertilizer Works.....	188	Cottam, H. T., & Co., Inc.....	128
Auto Painting & Repairing Co., Inc....	90	Coyle, W. G., & Co., Inc.....	192
<b>B</b>		Crane's Clothing Co.....	168
Baldwin, A., & Co., Inc.....	140	Crescent City Engraving Co.....	126
Barataria Tavern.....	38	Crescent Typewriter Exchange, Inc....	172
Bartlett Chemicals, Inc.....	186	Cutcher Canning Co.....	198
Beekman's.....	134	<b>D</b>	
Bell Distributing Co.....	138	Davison-Pick Fertilizers, Inc.....	128
Betz Service Station.....	164	DeSalvo, Frank, Grocery, Bar and Res- taurant.....	152
Bienville Meat Market.....	98	Ditta, Carlo.....	176
Billionaire Inn.....	176	Dixie Sales Co.....	142
Bishop-Edell Machine Works, Inc....	158	Dixie Tourist Court.....	120
Bleakley's.....	134	Drainage Construction Co.....	62
Bloodworth, Grasser & Dessauer, Inc..	182	Dufour Bros., Mctle.....	180
Blue Horseshoe Tourist Court.....	144	Duncan, Jacob L., Realtor.....	124
Blue Light Inn.....	190	Dunlap Sporting Goods Co., Inc.....	184
Blue Plate Foods, Inc.....	176	Durham's Feed Store & Hatchery.....	184
Boland Machine & Manufacturing Co., Inc.....	166	<b>E</b>	
Boulevard Garage & Beer Parlor....	154	Eble, Charles, Florist.....	144
Boulevard Hardware Store.....	178	Eighth Ward Democratic Club of Jef- ferson Parish.....	164
Bowers Feed Store, Inc.....	194	Ellzey Stores.....	196
Boyle & Oustalet.....	90	<b>F</b>	
Bridge Circle Inn.....	194	Fairbanks, Morse & Co.....	148
Brillo Manufacturing Co., Inc.....	164	Falcone, Jake, Grocery.....	192
Bronson & Scranton, Inc.....	146	Farnham Co.....	96
Brook Tarpaulin Co.....	158	Feitel, Ed. E., General Department Store.....	110
Brooklyn Land Co.....	184	Feitel, M., House Wrecking Co., Inc...	158
Brown's Restaurant and Cafe.....	176	Firestone Auto Supply & Service Stores.....	160
Brunies' Restaurant.....	192	First National Bank of Jefferson Par- ish, The.....	190
Butirich, Martin, Restaurant & Black Marble Cafe.....	190	Fisher, E. B., Agent.....	82
<b>C</b>		Fisher Shrimp Co., Inc.....	68
Cambias Office Equipment Co.....	186	Fisher's Store.....	162
Canal Oil Co., Inc.....	184		
Carey & Helwick.....	174		

	Page
Fitzgerald's .....	190
Fleming Canal Store.....	180
Foundation Finance Co., Inc.....	184
Franz Bros. ....	184
Freeport Sulphur Co.....	88
Freiberg Mahogany Co., The.....	150
Frey, L. A., & Sons, Inc.....	168

## G

Gauthier, Sidney, Grocery.....	178
Gendron, Leon, Grocery, Cafe and Barber Shop .....	108
General American Tank Storage Terminals .....	114
General Baking Co. ....	186
General Outdoor Adv. Co.....	116
Godchaux's .....	215
Godchaux's Sugars, Inc.....	132
Gonzales Motors, Inc.....	10
Grand Isle Chamber of Commerce.....	118
Great Atlantic & Pacific Tea Co., The.....	118
Great Southern Box Co., Inc.....	34
Great Southern Novelty Co. ....	160
Gretna Furniture Co., Inc.....	192
Gretna Hardware Co. ....	176
Gretna Industries, Inc. ....	188
Grover's Place .....	188
Gruber, Louis E.....	16
Gulf Coast Oil Co., Inc.....	146
Gulf Refining Co. ....	102
Gulf & Valley Cotton Oil Co., Inc.....	176

## H

Hansell, F. F., & Bro., Ltd.....	172
Harahan Service Station.....	196
Harvey Canal Ship Yard & Machine Shop .....	108
Harvey Lumber & Supply Co., Inc....	26
Harvey Lumber Yard .....	192
Heebe's Bakery .....	106
Hercules Powder Co., Paper Makers Chemical Division .....	114
Higgins Industries, Inc.....	170
Hill, H. G., Stores, Inc.....	86
Hiotane Sales, Inc.....	30
Hollywood Theatre .....	190
Hooper, C. O., Industrial Engineer....	84
Hope Haven Dairy.....	178
Hotard, Alvin E.....	164
Hotel Heidelberg .....	12
Humble Oil & Refining Co.....	138
Hurwitz-Mintz Furniture Co.....	166
Hyatt, A. W., Stationery Mfg. Co., Ltd. ....	148

## I

International Harvester Co., Inc.....	146
International Lubricant Corp. ....	150
Interstate Electric Co.....	170

## J

Jahncke Service, Inc.....	92
Jai Alai Club.....	84
Jefferson Bottling Co., Inc.....	164
Jefferson Cleaners .....	160
Jefferson Democrat .....	66
Jefferson Inn .....	80
Jefferson Parish Developers, Inc.....	174
Johns-Manville Products Corp.....	36

## K

Karger & Kerner.....	78
Kearny, J. Watts, & Sons.....	148
Kenner Chevrolet Co.....	194
Kennington, A. S. "Firechief".....	106
Kessels, Jack J. H.....	138
Ketchum & Smith.....	184
Klauser's, E., New Beer Garden & Bar.	196
Klotz Cracker Factory, Ltd.....	136
Kostmayer, M. D., Agency.....	170
Kress, S. H., & Co.....	158
Krower, Leonard, & Son, Inc.....	184

## L

LaBruyere's Quality Stores.....	178
Latter & Blum, Inc., Agents.....	188
Lawyers Title Insurance Corp.....	170
Leach & Johnson, Agents.....	96
Lee, Frank A.....	164
Leitz-Egan Funeral Home, Inc.....	160
Leson Chevrolet .....	64
Levy, Chas. ....	162
Lipton, Thomas J., Inc.....	186
Loose-Wiles Biscuit Co.....	130
Loubat Glassware & Cork Co., The....	156
Louisiana Coca-Cola Bottling Co.....	140
Louisiana Ice Service, Inc.....	168
Louisiana Power and Light Co.....	Outside Back Cover
Louisiana, State of .....	6
Louisiana State University .....	86
Lyons, I. L., & Co., Ltd.....	160

## M

Mackie, F. W.....	188
Marine Paint & Varnish Co., Inc.....	136
Marrero Land & Improvement Assn., Ltd. ....	112
Martin-Owsley, Inc. ....	72
Masset's Tavern .....	198
Matthews, Geo. B., & Sons, Inc.....	182
Mayronne Lumber & Supply Co., Inc..	154
Melling Cement Block Works.....	198
Messina's Suburban Inn.....	198
Metairie Bakery & Delicatessen.....	194
Metairie Hardware & Paint Store.....	166
Metairie Market .....	194
Metairie Ridge Ice Co., Inc.....	164



	Page		Page
Tichenor, Dr. G. H., Antiseptic Co.....	184	<b>W</b>	
Trico Coffee Co., Inc.....	168	W. W. L. Development Co.....	82
Tropical Radio Telegraph Co.....	116	Waterman, J. S., & Co., Inc.....	166
Trucker's Ice & Cold Storage Co.,		We-Go-Inn .....	198
Ltd., The .....	174	Weiner's Furniture Co.....	190
<b>U</b>		Western Union Telegraph Co.....	182
U. S. Industrial Chemicals, Inc.....	100	Whitney National Bank.....	144
United Gas Pipe Line Co.....	40	Williams, W. Horace, Co., Inc.....	170
United Liquors, Inc. ....	156	Wisser's Cafe & Grocery.....	198
Unity Plan Finance Co., Inc.....	182	Woodward, Wight & Co., Ltd.....	134
<b>V</b>		<b>Z</b>	
Villars, F. J., & Sons.....	204	Zetz 7 Up Bottling Co., Inc.....	142
Vonder Haar, Frank A.....	118		



## GODCHAUX'S

FIRST IN FASHION SINCE 1840

FINE APPAREL FOR MEN, WOMEN AND CHILDREN

GREASE GUNS  
REPAIRED

HEADLIGHTS  
ADJUSTED

## O. W. SUHREN

BATTERY—ELECTRICAL SPECIALIST

708 JULIA ST.

RA. 1035

NEW ORLEANS, LA.

SPARTON HORNS  
CHAMPION SPARK PLUGS

EXIDE BATTERIES  
BOSCH MAGNETOS



JUSTIN F. BORDENAVE  
Editor and Publisher

ANNIE LAURA HOWARD  
Associate Editor

JOSEPH H. MONIES  
Business Manager

Circulation of the

**OFFICIAL PUBLICATION OF THE POLICE JURY OF  
JEFFERSON PARISH**

1937—5,000 Copies

1938—10,000 Copies

This, the 1939 Issue—15,000 Copies

This book manufactured in its entirety by Union Labor

**THE AMERICAN PRINTING COMPANY, LIMITED**

One Color Engravings by  
**CRESCENT CITY ENGRAVING CO.**

Front Cover Plates by  
**JAHN & OLLIER ENGRAVING CO.**

Color Photograph for Cover taken with  
Eastman's Kodakrome by  
**F. A. McDANIELS**

## INFORMATION

of any kind regarding opportunities in Jefferson Parish may be obtained from the men whose names appear below. The establishment of industries is aided in every way by the Police Jury. To those interested in locating within its boundaries, Jefferson Parish offers every inducement. To industries it offers extremely low transportation costs, easy access to raw materials, an excellent point of distribution, and ten years' tax exemption. To farmers it offers rich, alluvial soil, mild climate and a close and ready market. To homeseekers it offers clean, pure air and sunshine, and the neighborly spirit not found in cities.

We invite all who are seeking a broader, better life and more and wider opportunities to make full use of Jefferson Parish's natural resources and spirit of friendly co-operation.

Weaver R. Toledano, President  
Police Jury  
Kenner, Louisiana  
Kenner 2791

Justin F. Bordenave  
Kenner, Louisiana  
CEdar 1897  
Kenner 2191

Wm. Hepting, Secretary  
Police Jury, Courthouse  
Gretna, Louisiana  
ALgiers 2116

# Congratulations To Our Neighbor



Jefferson Parish has made great strides during the last decade . . . the magnificent Huey P. Long Bridge, which spans the mighty Mississippi, has united the Westbank and Eastbank of this progressive parish . . . miles of concrete roads stretch from one end of the parish to the other, with many more miles now under construction . . . a modern school system has been established . . . sidewalk paving has been completed . . . up-to-date sewerage is being laid . . . the endless bayous and marshes find motor-driven vehicles and motor boats carrying on all classes of trade; fishing, trapping, hunting . . . large industrial plants dot the whole parish . . . the Intracoastal Canal, the seafood industry, the modern truck farms and dairies—all contribute to the growth and development of Jefferson.

This company, which furnishes the City of New Orleans with electrical, gas and transportation services, extends best wishes to Jefferson Parish for continued growth and development.

## **NEW ORLEANS PUBLIC SERVICE INC.**

# FORWARD! JEFFERSON PARISH!

Jefferson Parish faces the greatest era of progress in its history — that prosperity in which every family can share. Our Company is prepared now to service Jefferson Parish industries for their greater efficiency and expansion. And we are working always to bring the *magic of Cheap* electricity to more and more families. Thus with greater prosperity they can make fuller use of all helpful electric appliances.

These interesting figures show how Cheap Electricity and gas have brought hours of happiness to more and more Jefferson Parish homes.

In Jefferson Parish in 1928 there were 52 miles of electric line.



In 1938 there were 200 miles of electric line.



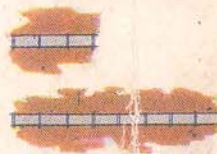
An increase of 285%.

Similarly, the number of electric customers has grown in ten years from 3,026 to 8,794.

Thus, 5,768 additional families can enjoy the benefits of Cheap Electricity.



The number of miles of gas lines has increased in ten years from 37 miles to 86 miles.



An increase of 132%.

At the same time 3,358 more families have been able to use gas and helpful gas appliances.



**LOUISIANA POWER  
& LIGHT COMPANY**

"Helping Build



Louisiana"