



Shrimp boat, trawling in the waters of Barataria Bay... These boats bring shrimp to market for immediate consumption and to canneries and drying platforms.



Fresh caught shrimp, well-iced, arrive in boatloads from the Barataria Bay section. Pictured is the Southern Shell Fish cannery at Harvey, the largest and most modern shrimp-packing plant in the United States. This photograph shows, left to right, the screened unloading wharf, behind it the shelling room, the packing house, the receiving station, the ice manufacturing plant and, behind it, the warehouse.

EUG. J. BENDER, President

ROBERT ANDERSON, Vice-President

**PETER P. ROWAN CO., Ltd.**

JOBBER

WAGON MATERIALS, AUTO TOP SUPPLIES, MOULDINGS, IRON  
AND STEEL PRODUCTS, HARDWARE SPECIALTIES, PIPE  
FITTINGS, ELECTRICAL SUPPLIES

RAYMOND 4346

908 to 920 Perdido St.

New Orleans

**Fairbanks-Morse Products**

Fill the Needs of the Nations

Diesels - Motors Pumps - Scales - Farm Machinery

Air Conditioning - Home Appliances

STOP AT

**BLEAKLEY'S**

New Orleans-Baton Rouge Airline

HALF-WAY STOP

**Colonial Country Club**

HARAHAN, LA.

C. O. ROOME,  
President

ARTHUR G. HILL,  
General Manager



United States come from Louisiana waters. Its progress in this branch of industry is indicated by the following figures:

1933—34,872,115 pounds, valued at	_____	\$1,220,525.07
1934—47,580,960      "      "      "	_____	1,665,333.60
1935—53,126,064      "      "      "	_____	1,859,412.25
1936—60,217,388      "      "      "	_____	2,107,608.58
1937—76,217,825      "      "      "	_____	2,667,623.87

Jefferson Parish is Louisiana's leading parish in the production of shrimp. Within its boundaries lies the greater portion of the Barataria Bay section, one of the world's most productive shrimping areas. Its coastal waters are dotted with the boats of several hundred fishermen, who bring their catch to the canners, packers and drying platforms. The processing, packing and shipping employ hundreds of men and women. The largest and most modern shrimp-packing plant in the world is located at Harvey, and many other packing and processing plants and a number of drying platforms are located in the parish.

This industry is under the supervision of the Fisheries Division of the Department of Conservation. The canneries are under the direct supervision of the U. S. Food and Drug Administration, which maintains a corps of inspectors to examine the raw shrimp before peeling, to check the processing time and the sanitary condition of the plants. By subscribing to this inspection service, the canners are per-

The shrimp enter the plant through an ingenious, under-water, fly-proof door. The unloading platform is thoroughly screened. A conveyor belt carries the shrimp to the first inspection.





## PONTCHARTRAIN LUMBER CO., Inc.

Office, Plant and Yard  
Shrewsbury Road and I. C. Crossing

RED CYPRESS AND YELLOW PINE  
MILLWORK

Paint and Building Materials

P. O. Box 47

METAIRIE, LA.

CEdar 1224

## International Lubricant Corporation

MANUFACTURERS OF THE HIGHEST QUALITY

Automotive and Industrial Lubricants

OFFER

**International and Friction-Free  
Motor Oils**

IN SEALED CANS

GUARANTEED LUBRICANTS New Orleans, U. S. A.



## Blue Horseshoe Tourist Court

ALL MODERN

500 Feet Above Protection Levee

Raised Cabins, Garages Below

Mills and Litloff

R. Mullen, Manager

## Pullman Standard Car Manufacturing Co.

NEW ORLEANS CAR WHEEL PLANT

Manufacturers of Chilled Tread Wheels for Freight, Street Car  
and Industrial Service

Post Office Address, P. O. Box 4086, Station F

New Orleans





This is a shelling room. Skilled fingers leave the plump shrimp-meat whole and perfect. A large, airy room in summer and overhead unit heaters in winter keep the workers comfortable at all times.



A shelling room at night, bright and spotless, ready for a clean start next morning.





Preferred  
to the  
Costliest  
Shortenings



## Penick & Ford, Ltd., Inc.

Packers of  
**BRER RABBIT Syrups and Molasses**

R. W. MAYRONNE, President

O. H. MAYRONNE, Sec.-Treas.

### MAYRONNE LUMBER & SUPPLY CO., Inc.

LUMBER, MILLWORK, ROOFING, BUILDING MATERIAL,  
CEMENT, BRICK AND LIME; FEED AND COAL

Distributors of  
JOHNS-MANVILLE RIGID ASBESTOS SHINGLES

UPtown 8645, 8646

MARRERO



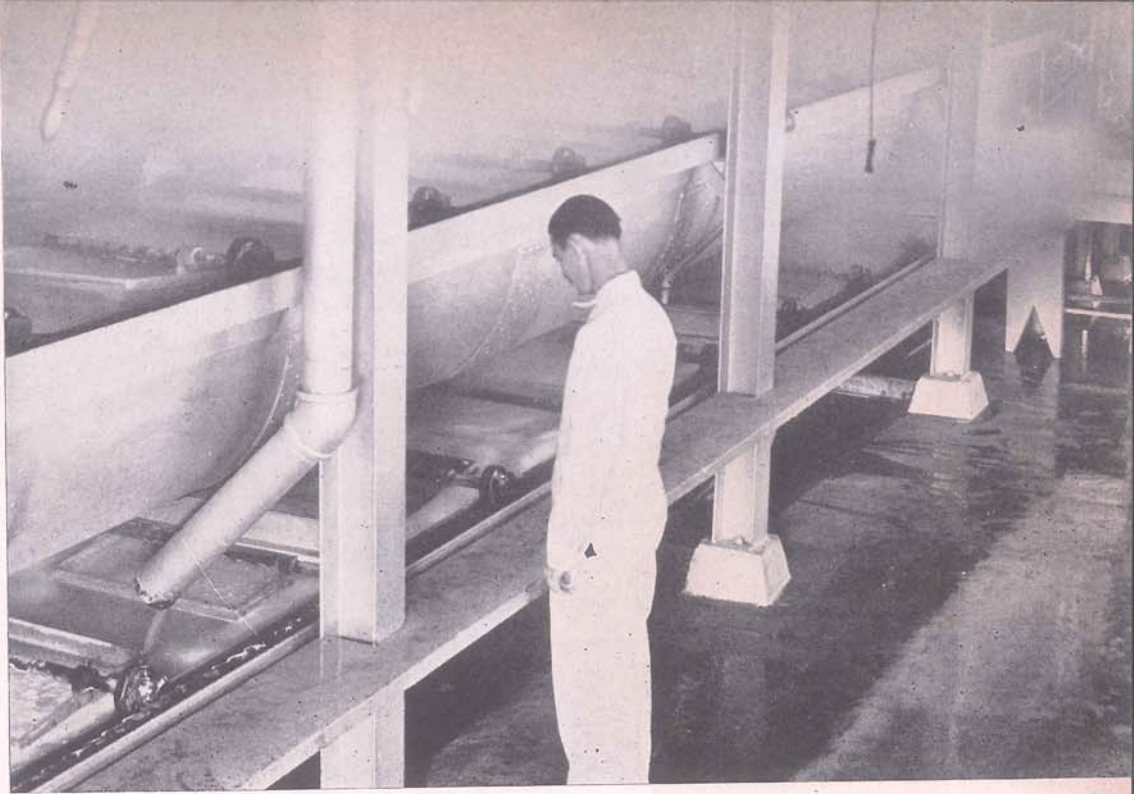
### FRANK DeSALVO'S

*Grocery, Bar  
and Restaurant*

Main Highway  
Harvey, La.

UPtown 9384





The "cooking" process. The automatically controlled time and temperature cooker is an exclusive feature of the Southern Shell Fish plant.

mitted to label their packages in accordance with the provisions of the U. S. Food and Drug Administration.

Inasmuch as the life span of the shrimp is shorter than that of any other animal of economic importance, the industry must lack the stability shown by others, for example, the halibut industry, where fish of from seven to twenty years appear in the catch, and the entire failure of the young in any one year would not seriously reduce the total output.

The extended breeding season of the common shrimp, which lasts for at least four and a half months, in the spring and summer, and the vast number of eggs produced are favorable factors, since they render the failure of an entire breeding season almost impossible. This spawning occurs in the outside waters. Unlike the river shrimp, crab and crayfish, these shrimp do not carry their eggs, but deposit them directly in the water, where they are carried with the currents. On hatching, the young shrimp are about one seventy-fifth of an inch in length, and are quite helpless. The young shrimp eventually reach the shallow inside waters, which serve as a nursery ground. They grow rapidly, and as they grow tend to seek larger bodies of water, eventually reaching the waters of the Gulf. By August they begin to appear in the commercial catch, and by the end of September the young shrimp dominate the catch of the entire fishery. Because of this, there is a constant differentiation in the sizes of the outside and inside shrimp, the larger shrimp occurring on the outside.

With the approach of cold weather the shrimp move into the deeper and warmer waters of the Gulf, with the result that in mid-



**Excellent Fishing, Hunting and Hotel  
Accommodations**

## **FORNEST MILLIET**

**BAYOU RIGAUD**

**GRAND ISLE, LA.**

**J. C. COLLINS, Agent**

**SINCLAIR REFINING COMPANY**

**Distributor**

Gasoline, Greases, Oil, Insecticides and other Sinclair Products

**ALSO GOODYEAR TIRES AND BATTERIES**

P. O. Box 22—Westwego, La.

**Walnut 4759**

**The North American Trading & Import Co.**

**"NATICO" BLACKSTRAP MOLASSES**

**Publicker Commercial Alcohol Co.**

**Westwego, Louisiana**

**Gulf Coast Oil Co., Inc.**

Operating in Louisiana, Mississippi and Alabama

**WHOLESALE AND RETAIL**

**Featuring Gulf Coast Anti-Knock 65-Plus  
Gasoline**

**Main Office 3331 St. Charles Ave.**

**New Orleans**



winter only the smaller shrimp are to be found in the inner waters. As the water becomes warmer in spring, the shrimp show an increased growth rate. Spawning occurs, and the adult shrimp disappear with the appearance of the young, thus completing their life cycle.

The shrimp fishing areas of Jefferson Parish rarely extend far from shore, embracing the inner waters of bays, bayous and lakes, and a coastal strip within ten miles of the shore.

Our shrimp fishermen are mostly of French extraction, native to this region for many years. The crew of a trawling craft may consist of two men, captain and mate, or more. Along the coast a trawler usually fishes from a single port and for only one handling plant throughout the season; consequently, the fishing grounds are those areas which can be reached within a reasonable length of time by the trawler or the "ice" boat transporting the catch to port.

Great care is exercised in handling shrimp to insure their reaching the markets and processing plants in good condition. Since they are naturally a highly perishable seafood, and rendered even more susceptible to spoilage by the warm climate, handling must be expedited and proper icing is essential. For this reason, trawlers carry ice unless the catch can be landed at the plants within a few hours or transferred to ice boats. After the trawl is drawn in and emptied on deck, the catch is culled by the crew, the small shrimp, other fish and debris thrown overboard. The marketable shrimp are then stored in

Immediately after shelling, the shrimp are conveyed by crystal-clear water to the second inspection station. Here trained inspectors discover and remove bits of shell or broken shrimp.





**Boulevard Garage & Beer Parlor****MARRERO**

Beer, Wine and Whiskies

**Gas—Everything—Oil  
For Cars**

UPtown 9350

**Chickasaw Wood Products Co.**

GRETNA, LA.

**BARRELS, KEGS AND SHOOKS**

ALgiers 1786

**CLERC LUMBER CO., Inc.**

BUILDING MATERIAL

**"LONG LEAF PINE"**

Governor Hall and First Streets

ALgiers 2159

GRETNA

---

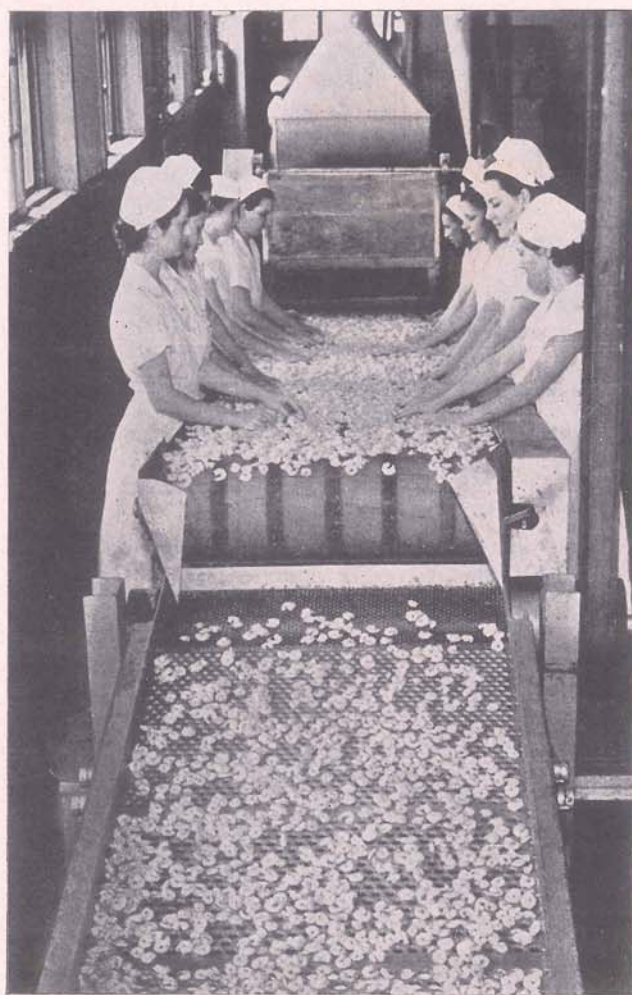
---

**LEO W. McCUNE**GRETNA

---

---





The third inspection occurs after the pre-cooked shrimp have cooled. From the conveyor belt the shrimp drop to the automatic grader. Many, many delicious dishes will be made from the shrimp right in this picture.

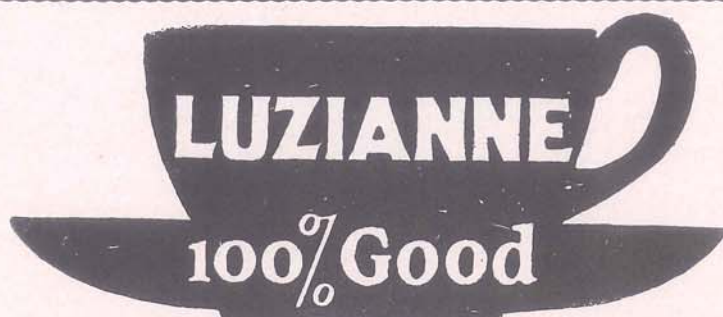
the hold between layers of ice or transferred to "ice" boats, to be iced and taken to the plants.

Shrimp in Jefferson Parish are prepared for market in six different ways, namely, fresh whole, fresh headless, fresh cooked, frozen, canned and dried.

Fresh whole shrimp are delivered to the local markets for immediate consumption. These shrimp are iced for preservation, but require no other handling. The people of New Orleans and southern Louisiana prefer to buy their shrimp whole—that is, with the heads on.

For shipment to inland localities and the Atlantic seaboard, the heads are removed, and the shrimp packed in boxes, in ice. A con-





Day and Night Service

**Bishop-Edell Machine Works, Inc.**

"GENERAL MACHINE REPAIRS"

Marine and Industrial

"DIESEL ENGINE SPECIALISTS"

Cylinder, Crankshaft and Surface Grinding—Gear Cutting, Forging, Boiler  
Repairing—Welding and Portable Equipment of All Kinds

Phones: RA. 5221-5222

1008-18 Magazine St.

Nights and Holidays Call: JA. 1478, AL. 1176-W, GA. 3583 New Orleans, La.

## *LAWYERS TITLE INSURANCE CORPORATION*

2nd Floor Baronne Building

NEW ORLEANS, LA.

## **Orleans Material & Equipment Co.**

REINFORCING MATERIALS—STEEL PILING, NEW AND USED  
CASTING—EXPANSION JOINTS

2730 Clio Street

P. O. Box 87

RAYmond 9538

NEW ORLEANS, LOUISIANA

## **FISHER'S STORE**

CHARLES LEVY, Prop.

GENERAL MERCHANDISE

Phone Us for Arrangements for Fishing Trips

PHONE LAFITTE 5103

LAFITTE, LA.



siderable quantity of this product, known as fresh headless, is shipped from Westwego.

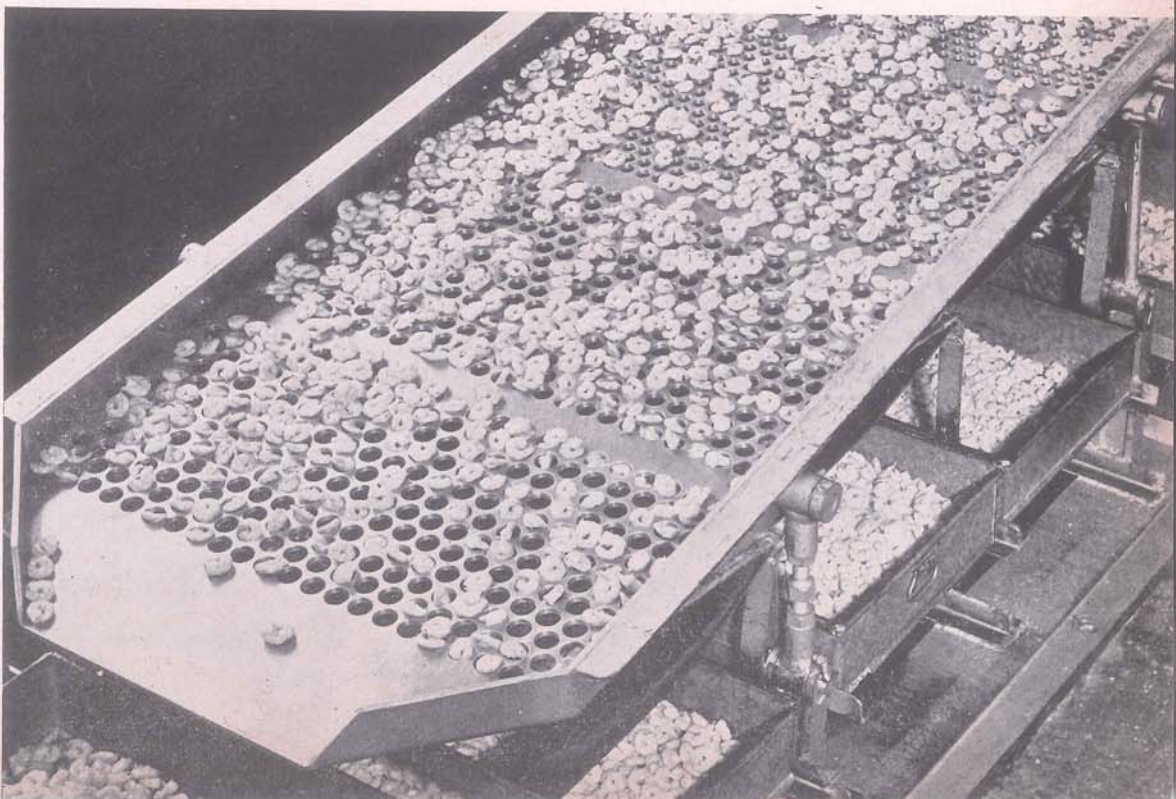
Shrimp to be sold as fresh cooked are first headed and peeled. The meats are washed and boiled in brine, and the cooked meats packed in tins, to be shipped on ice to the consumers.

Frozen shrimp require the preliminary handling of heading and washing. They are then packed on trays and frozen rapidly at a temperature of 40 degrees below zero. They are then dipped in cold water and frozen again, wrapping each shrimp in a coat of ice, and assuring more protection. Most of the frozen shrimp is exported to the Orient, though a great deal is shipped to northern and eastern markets, especially when their seasons are closed.

It is estimated that approximately one-half of the shrimp catch is utilized in canning. The canning of shrimp was first attempted in the establishment of G. W. Dunbar Sons in 1867, but it was not until the bag lining for cans was devised by this concern, in 1875, that canning met with success.

In canning, the raw shrimp are carried in baskets or on conveyor belts from the storage bins or ice boats, and dumped on the pickers' tables. The pickers remove the head and peel the shrimp, separating meat and hull in one deft motion. While there have been reports of successful operation of mechanical shrimp pickers, throughout Jefferson it is entirely a hand operation.

The shrimp are automatically and unerringly graded for size. The largest and plumpest reach the end of the line, while the other sizes find their respective places.







Exclusive Distributors of Schenley Products

## UNITED LIQUORS

INCORPORATED

WHOLESALE ONLY

232 Canal

New Orleans

Jos. B. David, Pres.

H. E. Brister, Gen.-Mgr.

## S. H. KRESS

5c, 10c and 25c Store

923 CANAL STREET

NEW ORLEANS, LA.

MRS. R. M. MILLER  
Proprietor

C. A. O'NEILL  
Field Service Man

## MILLER'S FEED STORE

DISTRIBUTORS OF

STAF-O-LIFE QUALITY FEEDS

HAY - STRAW - OATS - CORN

We deliver to Jefferson Parish Daily

700 S. Broad Street

Phone GA. 7401

New Orleans, La.

## The Loubat Glassware & Cork Co.

Cooking and Serving Equipment and Supplies

For Hotels, Restaurants, Bars, Cafeterias, Clubs,  
Hospitals and Institutions

NEW ORLEANS

LOUISIANA

PROGRESSING WITH JEFFERSON PARISH

## GREAT SOUTHERN NOVELTY CO.

409 S. Rampart St.

"Buster" Clesi, Manager

Magnolia 3634





In just a short time after the start, the shrimp are packed into glass jars (foregorund) or into enameled cans.

The meats are than washed thoroughly preparatory to blanching, or boiling in brine. The most commonly employed method is the use of wooden tanks, usually cypress, at the bottom of which are steam coils for heating the brine. The strength of this brine and the length of time for cooking may vary, depending on the size of the shrimp, weather conditions, or whether wet or dry pack is being prepared. Variations may also result from the requests of buyers of canned shrimp seeking a product of light or heavy salt content.

Before blanching, the meats are white in color, but they emerge from the boiling in brine with the bright red markings so distinctive of the product. After blanching, the meats are either dumped into trays having wire netting bottoms for cooling, or into conveyors equipped with blowers to cool and dry the meats and blow out any remaining bits of hull or foreign matter.

After cooling, the shrimp meats are repicked for final elimination of refuse matter, then graded. This may be done by hand or by mechanical graders. These mechanical graders consist of plates, usually aluminum, in which are holes of from three to five sizes; the smaller holes nearer the conveyor, the sizes progressively increasing. The plate is inclined downward from the conveyor, and when in operation is shaken with considerable force, so that the smaller shrimp pass through the small holes to containers placed immediately underneath, the next size through slightly larger holes farther down the line, and so on, the larger shrimp passing out over the end of the grader into a container there.



## **Firestone Auto Supply & Service Stores**

**A Complete Line of Tires, Batteries, Brake  
Lining and Auto Supplies**

RAYmond 0366-7-8

557 N. Rampart St.

## **Chase Brass & Copper Co., Inc.**

**Copper Tubes and Fittings—Copper Roofing Material  
Bronze and Copper Screen Cloth, Copper Nails, Etc.**

WALTER E. EVANS, District Manager

429 CAMP STREET

NEW ORLEANS

**FOR INSECT RIDDANCE**

Spray with

## **LYONS' LIQUID INSECT SPRAY**

**THE NEW AND BETTER INSECTICIDE**

**Pint Bottles 25c**

**at your Drug Store**

## **M. FEITEL HOUSE WRECKING CO., Inc.**

Established 1888

**Building Materials**

3900-3922 Tulane Ave.

Phones GALvez 1178-1179

NEW ORLEANS

**FOR AWNINGS, TARPAULINS  
VENETIAN BLINDS**

## **Brook Tarpaulin Co.**

J. A. O'CONNOR, President  
1730 Tchoupitoulas St.

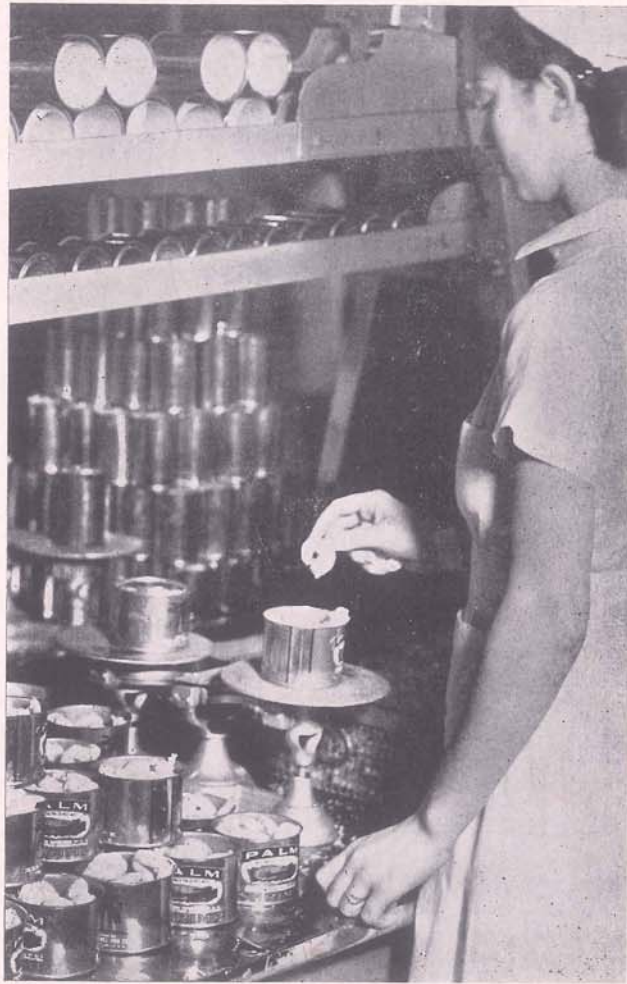
357 Vincent Ave., Metairie

CEdar 1368

RAYmond 4169

**Best Quality—Low Prices—Club Plan**





One more shrimp is added—and net weight is exactly correct on the scale.

Grades of canned shrimp may vary with different canneries, and in the same cannery may vary according to specifications of the buyer. Typical sizes of packs may be indicated as "small", "medium", "large" and "jumbo". Very small shrimp may be packed as "baby" shrimp, and pieces are known as "salad" shrimp.

The last handling of the meats occurs with the packing of the shrimp in cans or glass containers. If intended for wet pack, the cans are further filled with brine before sealing, and then conveyed to the sealer, where lids are attached. The glass pack is sealed under vacuum, and part of the dry pack is similarly handled.

Having been sealed, the cans are placed in metal baskets directly from the sealer, and are raised with cranes and lowered into the retorts for cooking. Wet pack shrimp are processed in the retorts at

**For SALE or RENT***Large and Small Factory Buildings***Gretna Industries, Inc. Holdings**

Gretna, La.

**Latter & Blum, Inc., Agents**

919 Gravier St.

RA. 1311

**H. SLIFSGARD, Distributor****Gulf Refining Company Products****That Good Gulf Gas**

Phone ALgiers 1828

Gretna, La.

**JEFFERSON CLEANERS**

L. S. HOPKINS, Proprietor

**CLEANING AND ALTERATIONS—HATS BLOCKED  
(MONITE MOTH PROOF CLEANING)**

Phone ALgiers 2201

930 Derbigny St.

GRETN, LA.

**ROOF GARDEN CLUB****McDONOGHVILLE**

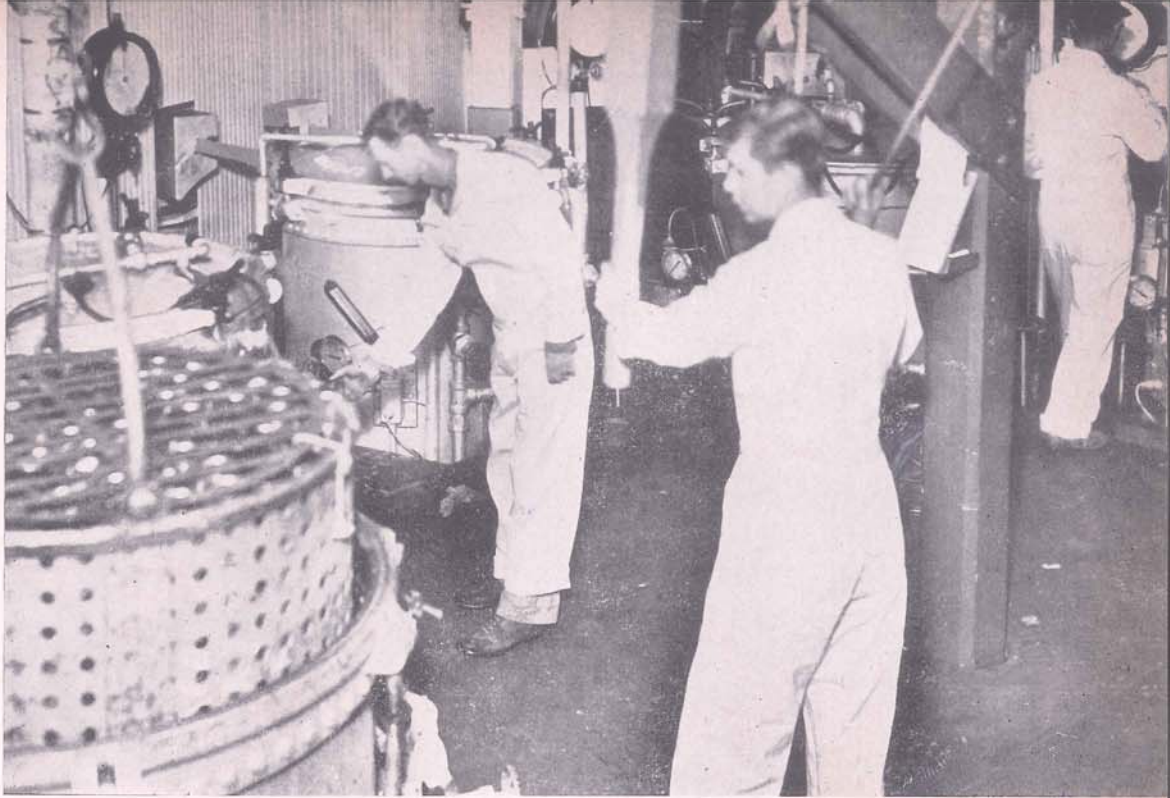
ALgiers 9110

**ALVIN E. HOTARD****CIVIL ENGINEER**

Phone ALgiers 1017

GRETN, LA.





The shrimp are cooked again, in their own individual containers. This is "pressure" cooking—the final step in insuring fine flavor.

250 degrees Fahrenheit for ten minutes, and dry pack are processed at 250 degrees Fahrenheit for longer periods. After processing, the cans are cooled, to be labeled ten days later, in order that any swells, leaks or other defects that may develop during this period can be eliminated before shipping. Once labeled, the cans are ready for shipment to any part of the world.

It is figured that about twelve per cent of the total catch in the Gulf and South Atlantic states is utilized for sun-dried shrimp, this phase of the industry being restricted to Louisiana, where the sun-drying of shrimp dates from 1873, when the first Chinese camps were started in the Barataria Bay region, at Manila Village in Jefferson Parish. Sun-dried shrimp represent about 11 to 13 per cent of the weight of the whole fresh shrimp. China is the greatest consumer of this product, but recently there has been a slight lessening in demand, owing to internal difficulties in that country and the decline of silver there.

The drying platforms utilize the smaller shrimp, even the little sea bob, which is always refused by the canners. In preparation for drying, the shrimp are landed at the drying platforms and transferred to the boiling vat, where the whole shrimp is boiled in brine fifteen minutes. After boiling, the shrimp are dipped from the vats and spread out on the drying platforms, in a thickness of from two to three inches. At intervals of two or three hours laborers turn the shrimp with wooden rakes to effect uniform drying. In summer drying is usually completed in three or four days, but in winter five to ten days



**MILAM'S FEEDS**

MILLED AND MIXED FRESH DAILY

SOLD BY

**SHREWSBURY ICE & FEED CO., INC.**Shrewsbury Road and Airline Highway  
CEdar 11102001 Gentilly Ave.  
FRanklin 2115**AVENUE FEED STORE, INC.**

5590 Canal Boulevard

GAlvez 2711

**METAIRIE RIDGE ICE CO., INC.**  
**JEFFERSON BOTTLING CO., INC.****THE CITY ICE CO.**

CEdar 1126

DRINK—

DOUBLE COLA

BIG SHOT ROOT BEER

TOM COLLINS JR.

**BRILLO****CLEANS ALUMINUM QUICKLY****2 EASY WAYS****CLEANSER**  
**5 PADS & SOAP**  
**SEPARATE****SOAP PADS**  
**5 SOAP-FILLED**  
**PADS****Shorten Your Work Day**

Do your housekeeping faster, better and easier with BRILLO—the modern cleanser. No messy rags, brushes or powders—just the big, square BRILLO soft metal fiber pads and special formula BRILLO soap—world's fastest cleanser. Try BRILLO today!

**BRILLO MFG. CO.**

Brooklyn, N. Y.

**FRANK A. LEE**

Louisiana and Texas District Manager

**Betz Service Station****TIRES, TUBES AND ACCESSORIES**

Gulf Products—Road Service

*Fred W. Betz, Prop.*

Phone CEdar 9105

Metairie Road

**LEITZ-EAGAN FUNERAL HOME, INC.**

GRETNA and NEW ORLEANS



may be required. The drying platforms are erected on posts, permitting free passage of air underneath to facilitate drying, and are built with gently undulating surfaces in order that the shrimp may be raked into piles on the crests of the undulations and covered with tarpaulin when rain or inclement weather threatens.

When the shrimp are completely dried, the heads and hulls are removed. A few years ago this process was known as "dancing the shrimp". The workers would gather the shrimp in piles, wrap their feet in burlap and then tread on the shrimp until the shells were broken off. Today, however, mechanical appliances resembling large hoppers are used, automatically removing the hulls from the shrimp. The dried shrimp are then sent through a blower to remove any fine particles of shell that might remain. After the blower they are ready for the crates.

Large quantities of waste result from the preparation of the various shrimp products for market. Approximately 44 per cent of the weight of raw shrimp consists of such waste in the form of heads, hulls and appendages. This vast tonnage of waste, supplemented by some quantities of soft and discolored whole shrimp, is now largely discarded. Its more complete use for conversion into meal for feed-stuff and fertilizer and other uses promises additional revenue in the shrimp industry. In the past year or so, this waste has been found to contain certain chemical ingredients that make it useful in the manufacture of paint.

This spacious warehouse with no posts, makes for speedy and efficient handling. From here, shrimp leave to bring gustatory enjoyment from coast to coast.





## MULLEN SHIP YARD

Builders, Designers and Repairs Crafts—Of All Description  
Engines Repaired and Rebuilt

Distributor of Gulf Products—Marine Bulk Plant

On Intracoastal Canal

AUdubon 1472

Harvey, Louisiana

## Commercial Solvents Corporation

DISTILLERS OF FINE ALCOHOL

TERRE HAUTE, INDIANA

Executive Offices: 230 Park Avenue, New York, N. Y.

## RYKOSKI, INC.

DISTRIBUTORS OF

Kerrick Kleaners - Ingersoll-Rand Compressors - Lincoln Lubrication  
Equipment - Exide Batteries - Timken Roller Bearings  
SKF Ball Bearings

Phones RA. 2296-7-8

New Orleans, La.

920 Julia Street

Paul Abele

Otto Abele

## ABELE BROTHERS

Florists and Nurserymen

MEMBER FLORISTS' TELEGRAPH DELIVERY

JOSEPH STREET, CORNER LAUREL

UPtown 1533-1534

New Orleans

Nursery—Richland Gardens—Jefferson Parish

## CLEM PERRIN

PUMPING STATION

LAFITTE

*Motor and Speed Boats, Skiffs and Canoes*

*For Rent—Fishing Equipment*





Manila Village, in the Barataria Bay region. The sun-drying of shrimp in the United States originated in this village on stilts, and this phase of the industry is still confined to the state of Louisiana.

Shrimp meal or "bran" may consist of the particles of hulls and waste accumulated from the drying of shrimp. It may also be prepared from the waste of shrimp picking operations, usually at canneries. This latter material is dried in a tube drier. The heads and hulls, if not given a preliminary crushing before drying, may be ground after. The product thus prepared is sold for mixed foods, Germany being our principal foreign market for this by-product.

Since the products of the shrimp industry have more than doubled in value in the past five years, while most industries have suffered losses, it is highly probable that in the not too distant future the now discarded waste products of the shrimp will be converted into useful articles of commerce, giving added prestige to an already important industry.



**The H. Sophie Newcomb Memorial College for Women**  
Ideally situated in the South's Greatest City

Offers full courses in:

Arts and Sciences, B. A.  
Applied Science, B. S.

Fine Arts and Crafts, B. F. A.  
Music: B. Mus.

For catalogue and further particulars

Address

**REGISTRAR, NEWCOMB COLLEGE**

New Orleans, La.

COME TO THE RECOGNIZED AUTHORITY

*A. G. Spalding & Bros.*

134 Carondelet St., New Orleans

**Install Fire Protection Equipment**

BEFORE YOUR FIRE!

AVOID DISASTER!

**American-LaFrance & Foamite Protection**

C. E. GILMORE

400 N. Peters St., New Orleans

RAYmond 4677

Always Buy

**SNOW FLAKE BISCUITS**

A Complete Line of Cakes and Crackers

Manufactured by

**PELICAN CRACKER FACTORY, Inc.**

New Orleans

RA. 6159

**CRESCENT TYPEWRITER EXCHANGE**

407 St. Charles Street

New Orleans, Louisiana

General Agents for

**L. C. SMITH AND CORONA TYPEWRITERS**

All Makes TYPEWRITERS Sold, Rented, Repaired

New and Used Portable Typewriters of All Makes. Rebuilt Standard

Machines of All Makes. Rebuilt Cash Registers Bought and Sold.

RAYmond 3741

Established 1894

**CAREY & HELWICK**

**HARDWARE AND SPORTING GOODS**

120 CAMP STREET

RAYmond 5426, 7281

PAINTS, STOVES, PLOWS, HARROWS, COLEMAN LAMPS,

IRONS, STOVES, ALADDIN MANTLE LAMPS

WE CARRY PARTS AND REPAIR COLEMAN PRODUCTS



## Progress in Education

LEM HIGGINS, B. A.

*Asst. Superintendent of Schools.*

*In Collaboration with Edward M. Comiskey,  
President of the School Board*

It should be of interest to the people of Jefferson Parish, who are always proud of the achievements of their parish, to know that there have always been schools in Jefferson for the education of her children. The earliest record of the schools is found in a time-yellowed document in the archives of the Cabildo which shows that schools were in operation as far back as 1831. Although the parish was actually created by legislative act in 1825, the fact that the few records that were kept have been lost leads to the belief that there were probably schools in the parish from the very beginning.

These were not public schools in the true sense as we know them today. Real public schools did not exist at that time anywhere in the state. But it is a matter of record that true "free public schools" were projected by the Jefferson Parish school authorities before they existed



Jefferson High School—Jefferson Parish's Basketball Champions. Front row, left to right—Edward M. Comiskey, President of the Jefferson Parish School Board and member from ward in which school is located; Emile Lochbaum, coach, and J. V. Fairchild, Principal.

Second row—Charles Putfark, Williams Daniels, Marvin Lindsay, John Ernst, Peter Petrie, and Lucien Bergeron.

Third row—Walter Whittington, Durelle Couey, Walter Catoire, and Merwin Victory.



A perfect blend of Choice Meats and Spices Makes

***Favorite Sausages***

"The Preferred Kind"

Made  
by

**L. A. Frey and Sons, Inc.**

NEW ORLEANS

Makers of Good Sausage for over 50 Years

ASK FOR

**OLD COMISKEY**

KENTUCKY'S FINEST BOURBON WHISKEY

**JAMES E. COMISKEY CO.**

RAYmond 9411—9412—9413

**DIBOLL-BOETTNER and KESSELS**

Architects and Associated Engineers

NEW ORLEANS

**M. D. KOSTMAYER, Agency**

GENERAL INSURANCE

RAYmond 6151

New Orleans

709 United Fruit Bldg.

*"Everything For Your Office"*

**DAMERON-PIERSON CO., Ltd.**

MANUFACTURING STATIONERS, OFFICE OUTFITTERS

400 CAMP ST.

NEW ORLEANS

**J. S. WATERMAN & CO., INC.**

426 S. PETERS ST.

Flour, Bakers' Supplies and Bakers' Machinery





Jefferson Parish's school band, composed of 125 boys and girls from various schools throughout the parish, is State Champion, Parish Band Division, Class F, and was the largest band in the contest held at Baton Rouge. This band has played an Honor Concert at the Coliseum, in Baton Rouge, and has been invited as Honor Demonstration Band to the National Contest at Louisville, Kentucky, May 27-28.



"You're there with a Crosley"

**Crosley Radios and Shelvador  
Electric Refrigerators**

**INTERSTATE ELECTRIC CO.**

643 MAGAZINE

Southern Distributors

NEW ORLEANS

**GENERAL OUTDOOR ADV. CO.**

NEW ORLEANS

**Crane's Clothing Co.**

1218 CANAL STREET

**F. F. HANSELL & BRO., Ltd.**

OFFICE AND SCHOOL FURNITURE

BOOKSELLERS AND STATIONERS

131-133 Carondelet Street

New Orleans, La.

Magnolia 5616

**Salcedo Distributing Company, Inc.**

**PETROLEUM PRODUCTS**

MOTOR OILS, GASOLINE, KEROSENE, FUEL OILS,  
NAPHTHA, GREASES

1101-1113 S. Salcedo St.

New Orleans

**VICTOR E. KARNES**

Consulting Geophysicist

Whitney Building

New Orleans, La.





Gretna High School—Jefferson Parish's Volley Ball Champions. Standing, left to right: Ola Toups, Alice Dauenhauer, Helen Delcuze, Hon. Alvin T. Stumpf, State Representative; Miss Helen Cox, Principal; Miss Becky Beck, Coach; Dorothy Perrin, Lorraine Perrin, Shirley Gremillion, Eunice Bateman, Vivian Bartels and Edith Daul. Cheerleaders: Shirley Thomassie, William Schurb and Alice Clapp.

in any other parish in the state. The origin of the modern system of free public schools is found in an ordinance passed by the Council of the City of Lafayette, at that time the parish seat of Jefferson Parish, now part of the city of New Orleans, on November 4, 1841.

From that period on, the schools of the parish have forged ahead, and now, under the capable leadership of Mr. J. C. Ellis, Superintendent, and the fourteen elected members of the school board, they rank equally with any other schools in the state.

A word of well-earned praise is due here to those fourteen members of the school board who have given unstintingly of their time and advice to aid the cause of our public schools. When it is remembered that no monetary reward comes their way, and that their only recompense is the knowledge that they have developed a school system worthy of the people whose representatives they are, then can we truly acknowledge our gratitude to them.

It has always been the policy of the Jefferson Parish School Board to carry on an extensive building program. In the past thirteen years over a million dollars has been spent for school buildings. At present there are six senior high schools, five of which have elementary



**J. BURROWS JOHNSON**

339 Carondelet St.

**REALTOR****DEVELOPER****W. HORACE WILLIAMS CO., INC.****ENGINEERS—GENERAL CONTRACTORS**

SOUTHERN BLDG.

833 HOWARD AVE.

**MARSHALL J. SMITH & CO., LTD.**

Established 1868

**INSURANCE AND UNDERWRITERS AGENTS**W. J. Hardin, President - W. L. Ferguson, Vice-President - J. P. Casey, Vice-President  
Geo. P. Moreno, Secretary - Joseph J. Ryan, Manager, Fire Department

339 CARONDELET STREET

RAYmond 7106

New Orleans

**SCHAYER-BADINGER****Automotive Service****ESTIMATES ON REQUEST**

724 South Saratoga St.

RAYmond 1281-1282

Night Service—WALnut 6866

**LINCOLN OIL CO., INC.****PRODUCERS****CRUDE OIL**

912 WHITNEY BLDG.

NEW ORLEANS

**BOATS—ENGINES—PROPELLERS**

Steel Tugs and Work Boats

**HIGGINS INDUSTRIES INC.**

1755 St. Charles Ave.

New Orleans, La.

**DISTRIBUTORS—CHRIS-CRAFT BOATS**  
**EVINRUDE AND ELTO OUTBOARD MOTORS**  
High Pressure Pump—For Exploration—Oil Drilling





The sewing department of Westwego High School.



The Cooking Department at Westwego High School



## BROWN'S RESTAURANT & CAFE

For Over 20 Years The Best Place To Eat

FINE WINES AND LIQUORS

At Jackson Ferry Landing

GRETNA, LA.



## Gulf & Valley Cotton Oil Division

Manufacturers of

COTTONSEED SHORTENINGS AND OILS

**BLUE PLATE FOODS INC.**

Manufacturers of Delicious Blue Plate Food Dressings

## The First National Bank

OF

Jefferson Parish

## JOSEPH RIBAU

TRANSFER AND GROCERY

DRAYAGE OF ALL KINDS

Hauling When and Where You Want It

We Solve Your Trucking Problem

714 Fourth St.

ALgiers 2135

GRETNA

ALgiers 2183

## GRETNA HARDWARE CO.

125 HUEY P. LONG AVE.

CLIMATIC PAINTS

PHILCO RADIOS

LEONARD REFRIGERATORS

## BILLIONAIRE INN

LEWIS AND FINK PLACE

221 Huey P. Long Ave.

Phones ALgiers 1432, 1317 and 1711

GRETNA



departments; one junior high school, and nineteen elementary schools. Even schools for the colored children have been constructed. With modest pride we state that all of our schools have met, and in some cases surpassed, the standards set by the Southern Association of Colleges and Secondary Schools, and that they are approved by the Louisiana State Board of Education.

In the past year several additions and improvements have been instituted. Notably, Paul Solis, a graduate of Loyola University, has been made supervisor of elementary education, and the work in those schools is improving visibly under his earnest direction. Another noteworthy achievement, perhaps unequalled by the schools of any other parish, is the use of visual education. This very modern method of curricular and extra-curricular instruction is utilized in every school in the parish. All of our schools have the very finest 16MM projectors obtainable, and we are thus enabled to take advantage of the numerous free educational films on a variety of topics which are obtainable by the schools. An unusual addition to our curriculum, and one which is in keeping with the most modern trends in education, is the classes in safe driving. This subject, so important in these times when almost every family owns an automobile which is more often driven by the children than by the parents, is taught in all six of our high schools. Another important change has been in the type of school bus used. Believing that the safety of its charges is of prime importance, the school board has purchased a new type of all-steel safety bus to be used



The commercial department, Kenner High School.



The 3 Most Desirable Features in Refrigeration Are:

- *PROPER HUMIDITY*—to keep your foods from drying up.
- *WASHED AIR*—to keep your foods fresh; each free from foreign taste.
- *CONSTANT TEMPERATURE*—no manipulation; the correct temperature at all times.

*Only Ice Provides All Three—Provides Them in The New Modern Air Conditioned Ice Refrigerator. Ask Your Local Ice Deliveryman.*

**Consumers Ice Delivery — Comptons Ice Service**

ALgiers 1042—ALgiers 1466—ALgiers 1521

## ROSENSTOCK'S

WESTWEGO, LA.

## Louisiana Ice & Coal Co., Inc.

C. H. FREE, Manager

Office:  
1127 Julia St.  
NEW ORLEANS  
RAYmond 0651

Plant:  
WAlnut 9147  
WESTWEGO

## ED. MARTIN SEA FOOD CO.

ED. MARTIN, JR., Proprietor

Packer of Crab Meat and Cooked Peeled Shrimp and Headless Shrimp

TRUCK SERVICE WEEKLY TO NEW YORK CITY

P. O. Box No. 1—Westwego—WAlnut 9271

## CARLO DITTA

COAL

Let Us Fill Your Lots With Mississippi River Sand

UPtown 2687

634 Manhattan Ave.

Harvey, La.

## SIDNEY GAUTHIER

*Fancy and Staple Groceries, Liquors, Beer, Soft Drinks,  
Notions, Dry Goods*

UPtown 9275

HARVEY





The Chemistry Department, Marrero High School.

in the transportation of students from out-lying sections, and for other necessary functions such as sending teams to the various athletic events.

In the field of athletics, Jefferson Parish schools are, as usual, proud of their achievements during the past year. All of our high schools have had teams entered in every athletic event—even the state high school golf tournament. The team from Jefferson High School won the Class B championship in baseball and also the parish basketball tournament. Although it was not a strictly high school affair, we take great pride in the fact that the boys from Jefferson High School largely made up the Stumpf American Legion team which made such a glorious record in Legion baseball.

Perhaps the most important athletic event of the past year was not the winning of some championship, but the fulfillment of our dream of a parish-wide athletic program which would embrace every child in our schools. This program was instituted two years ago and proved so beneficial that it has been broadened out to include every school in the parish. Walter Schneckenberger has been appointed athletic director for the parish and this program has been put under his direction. Approximately \$2500.00 has been spent for equipment, and it is expected that the extensive plan of supervised athletics in the high schools and supervised play in the elementary schools will produce worth-while benefits to the health and happiness of all our students.

Great progress has likewise been made in that other important extra-curricular activity—music. Dr. Edwards, music director for the schools, has been given two extremely capable assistants: Martin



## Metairie Hardware & Paint Store

Headquarters for Sherwin-Williams Paints and Products

603 Metairie Road

Phone CEdar 9127

LEARN WHAT FAIRNESS REALLY MEANS

Buy Your Next Car From

**Kenner Chevrolet Company**  
AND SAVE

L. P. Dominique

Phone Kenner 9113

## MOONLIGHT INN

*Large Parking Ground*

*Sandwiches and Drinks of All Kinds*

*24 Hour Service*

*3205 Jefferson Highway*

*Jefferson Parish*

## LAURICELLA & CO.

Subdivision Developers

Hyman Subdivision

Harahan City

CEdar 1005

## DAIRYMEN'S PROGRESSIVE ASSOCIATION

*Producers and Distributors of Raw Milk and  
High Class Dairy Products*

We Have \$4,000,000.00 Invested in Jefferson Parish

—We Spend Our Money in New Orleans and Jefferson Parish—

## EIGHTH WARD DEMOCRATIC CLUB OF JEFFERSON PARISH

*Metairie, Louisiana*

*John Bordes, Chairman*

*George Hein, Vice-Pres.*

*Louis E. Breaux, Treas.*

*Ernest Riviere, President*

*Dan W. Eastman, Vice-Pres.*

*Mrs. D. E. Eastman, Secty.*





Prep League Class B. Baseball Champions of 1937—Jefferson High School. Left to right: Fred Barocco, Durelle Couey, Edward Pepper, John Hodgson, Louis Daigle, Alex Barocco, Henry Hoover, James Roberts, Edward Munsch and Merwin Victory. Also shown are J. V. Fairchild, Principal, and Henry Bergland, Coach.



Metairie High School—Jefferson Parish's Football Champions. Standing from left to right: Hon. Alvin T. Stumpf, State Representative; W. J. Menzel, Principal; A. Reilly, Capt.; Joe Zito, Bill Boehmer, Co-Captain; P. J. Hubbell, Coach; George Walters; J. B. Delerno, and Tom Hanly. Kneeling from left to right: Dean Andrews, Eugene Tregre, Eddie Hanly, Louis Bienvenu, Folse Bertaut, Hubert Aucoin, Jerome Breau, Arthur Herbert, Whitney Buras, Tom Stanborough, Jimmie Lohmann, Dan Buechner, and Arthur Douglas.



1903

## LaBRUYERE'S QUALITY STORES

1938

35 YEARS CATERING TO THE PUBLIC  
3 BROTHERS 3 STORES

—One Policy—  
"THE BEST FOR LESS"

## BOULEVARD HARDWARE STORE

C. O. CHERBONNIER, Prop.

SHERWIN-WILLIAMS PAINTS

Barataria Blvd.

Uptown 7237

Marrero, La.

## Continental Can Co., Inc.

HARVEY, Jefferson Parish

NEW ORLEANS

Sales Office, Galvez 4145

## HOPE HAVEN DAIRY

Milk from National Honor Roll Herd

Uptown 8192

MARRERO, LA.

## BOLAND MACHINE & MFG. CO., Inc.

OF JEFFERSON PARISH  
LAFITTE, LA.

General Machinery Repairs, Boiler Repairs, Blacksmiths,  
Coppersmiths, Pattern Makers, Electric Welding, Engineers

Tel. Goose Bayou 5221

Clyde Bourgeois, Representative

## BARATARIA TAVERN

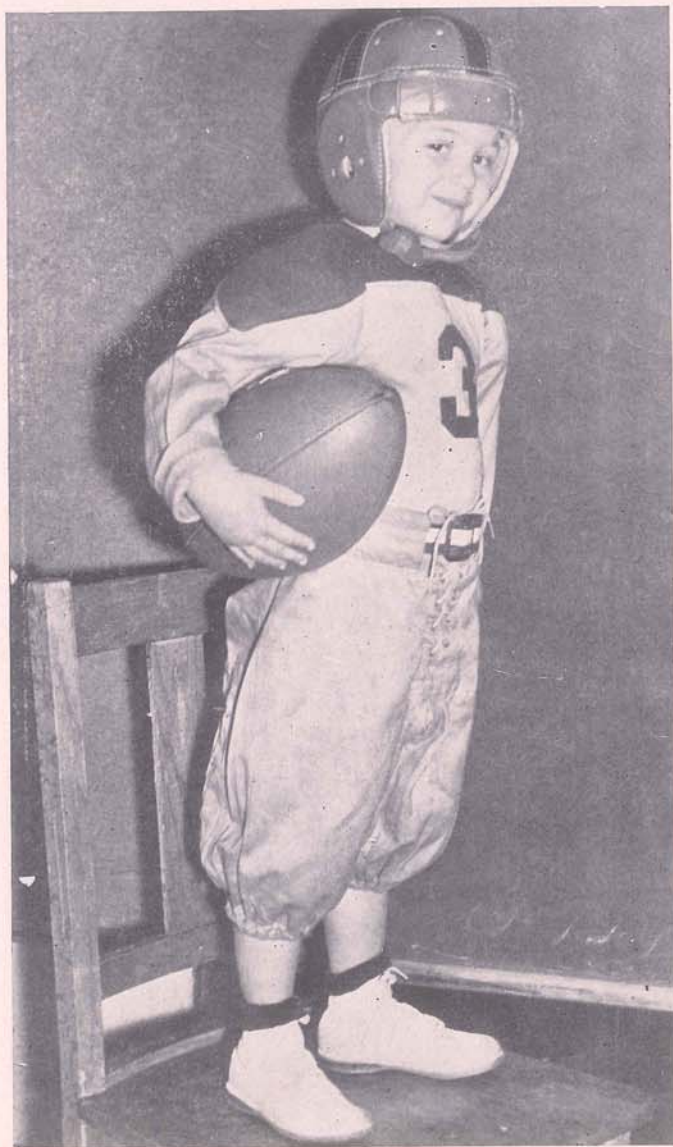
AT LAFITTE

SEA FOODS, PRIVATE DINING ROOMS, BOATS FOR HIRE

L. J. MAUS

L. D. GOOSE BAYOU 5221





Clancy Dupepe, mascot of the Jefferson Parish Athletic Association

Clancy, accompanist, and Lucille Hickman, graduate of the Louisiana State University School of Music, elementary vocal supervisor. The schools are proud of their joint achievements—especially of the 125 piece band which they have so excellently organized, and which was prominently featured in the 1938 Flower Show in New Orleans.

Judging from these high-lights of our accomplishments and progress during the past year, it should be obvious that we are proud of our school system. But we have dreams for the future that will make what we have already accomplished seem insignificant. We therefore earnestly solicit the aid and constructive criticism of our fellow citizens in order to make our dream come true.



**MEYER'S****LADIES', MEN'S AND CHILDREN'S READY TO WEAR****MARRERO, LA.****DUFOUR BROTHERS****MCTLE.****GENERAL MERCHANDISE****UPtown 9296****MARRERO, LA.****RITE-WAY SERVICE STATION****BOB FARRINGTON, Prop.****GULF PRODUCTS****Barataria Boulevard and Westwego Highway****Marrero, Louisiana****FLEMING CANAL STORE****FELIX T. FAVALORO, Prop.****GENERAL MERCHANDISE—FURS—ALLIGATOR HIDES****SEA FOODS—MOSS****Phone Barataria 7313****LEON NUNEZ'S DANCE HALL AND  
BARROOM****LEON NUNEZ, Prop.****DANCING EVERY SATURDAY NIGHT****LAFITTE****E. R. SCHIEFFLER****Buyer of Furs and Alligator Hides****SPEED BOATS FOR RENT****LAFITTE, LA.**





"Poppies"—one of the Jefferson Parish School floats in the New Orleans Flower Parade.



"Tulips"—another Jefferson Parish School float in the Flower Parade.



**GODCHAUX'S**

FIRST IN FASHION SINCE 1840

- Fine apparel for  
men, women  
and children

Marking Devices and Supplies  
Since 1867  
Badges—Bronze Tablets

**E.D. SMITH'S WORKS**  
**STENCIL** RA. 2129  
RUBBER STAMPS. STENCILS. SEALS  
426 CAMP NEAR POYDRAS

**PURINA FEEDS**

—in the—

**CHECKERBOARD BAG**  
Dairy Feed - Poultry Feed  
Baby Chicks - Supplies  
Fertilizer

**Durham's Feed Store  
& Hatchery**

501 N. Claiborne Phone GAlvez 3131  
We Deliver in Jefferson Parish

DRINK AND ENJOY

**"LIPTON TEA"**

"The Finest the World Produces"

THOMAS J. LIPTON, INC.

AWNINGS, WINDOW SHADES,  
VENETIAN BLINDS

Made in New Orleans by

**Fauria Awning &  
Shade Co.**

1216 Royal St. MAin 1778

"Use Our Club Plan"

**GEO. J. GLOVER  
COMPANY, Inc.**

BUILDING CONSTRUCTION

Whitney Building

New Orleans

**EMILE BIENVENU**

CERTIFIED  
PUBLIC ACCOUNTANT

New Orleans

—STOP AT—

**VICK AVEGNO'S**

124 EXCHANGE ALLEY



## A Shorter Road to Grand Isle

ALFRED D. DANZIGER

*Attorney*

At the southernmost tip of Jefferson Parish, within fifty miles of New Orleans, lies Grand Isle. Approximately four square miles in area, with a frontage of about eight miles on the Gulf of Mexico, Grand Isle offers the only surf bathing to be found in the vicinity of New Orleans. A favorite vacation spot, it may be reached either by boat, automobile or airplane. To most residents of Jefferson Parish and New Orleans, however, the present road to Grand Isle is longer than it need be, necessitating a trip of about 100 miles, through the parishes of Jefferson, St. Charles and Lafourche.

A new road has been proposed; the route has been surveyed and checked by the Louisiana Highway Commission and found to be thoroughly feasible both from an engineering and economic standpoint. The Federal, State and Parish authorities favor this project, and have



Mr. Donovan, chairman of the Tarpon Rodeo held at Grand Isle in the summer of 1937, checking some of the fish caught. Last year's catch was the largest ever taken. The boat is the Pat Marie 2nd, official yacht.



## **MERITA BREAD and CAKES**

Fresh at Your Grocer Daily

**AMERICAN  
BAKERIES CO.**

3101 Tulane Avenue  
Made in New Orleans

## **Foundation Finance Co., Inc.**

Various Loan Plans and Rates,  
Adjusted to Borrowers' Needs  
and Qualifications

411 Whitney Bldg.

RA. 5279

## **Cambias Office Equipment Company** SALES, RENTALS, SERVICE

Distributor  
Woodstock Typewriters  
Allen Adding Machines

RA. 0952

328 Carondelet St.

New Orleans, La.

For FRESH Cigarettes Buy  
Them from the

Cigarette Vending Machines

**N. O. CIGARETTE  
SERVICE CO.**

## **H. A. Thiberge Printing Co., Ltd.**

Stationers

Printers



County Record Books  
Office Supplies

510 Camp St.

New Orleans

## **BOND BREAD BAKERS**

RAymond 0475

CEdar 1598-M

## **Kammer-Delord, Inc.** INSURANCE

415 Carondelet Building

New Orleans, La.

MAURICE J. DELORD

122 Metairie Lawn Drive

Jefferson Parish, La.

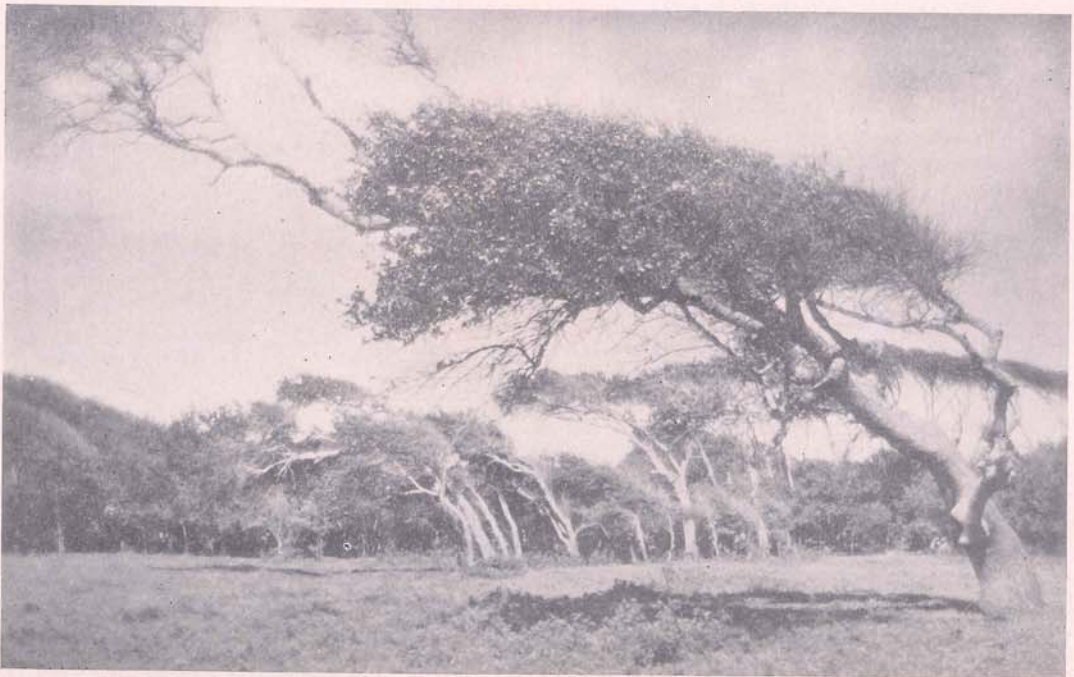
## **EDWARD BOURNE**

1107 MARITIME BLDG.





Grand Isle is famed not only for its surf and sports, but for its unique and picturesque beauty. In this lane, the interwoven oleanders form a fragrant and beautiful tunnel, at the end of which lies the blue Gulf of Mexico.



The constant pressure of the warm breezes from the Gulf has caused these trees to assume their wind-blown angles perpetually.



## Chalmette Petroleum Corporation

Refiners, Distributors and Exporters of

### Petroleum and Its Products

American Bank Building

Refinery and Export Station  
CHALMETTE, LA.

Cable Address: "CHAPETCO"

Code: BENTLEY'S

## COYLE LINES

Weekly Sailings

New Orleans to Houston

Via

Intracoastal Canal

ALgiers 1700 New Orleans

## SOULÉ COLLEGE

All Business Subjects Taught

Personal instruction. Day and Night Sessions. Open the Entire Year. You may enter at any time.

Placement Bureau assists graduates in getting located. Send for interesting additional information.

"Soulé Students Succeed"

The Logical Way to Banish Rust Is to Use "ARUSTCO" Paint

"ARUSTCO" Paint is more economical, as it will cover practically twice the surface of ordinary coatings.

Practical Tests Have Proven  
"ARUSTCO" Quality

### Anti-Rust Paint Co.

510 Felicity St. JACKSON 1129  
NEW ORLEANS

## BARTLETT CHEMICALS INCORPORATED

Industrial Chemicals  
Insecticides

923 Tchoupitoulas St.  
RAYmond 5144  
NEW ORLEANS, LA.

## Taylor-Seidenbach, Inc.

1401 Tchoupitoulas St.

Johns-Manville Products

DRINK

## Twin "L"

Manufactured by  
WORLD BOTTLING CO.  
LIMITED

FRanklin 2161

New Orleans

## Bronson & Scranton, Inc.

INVESTMENT SECURITIES

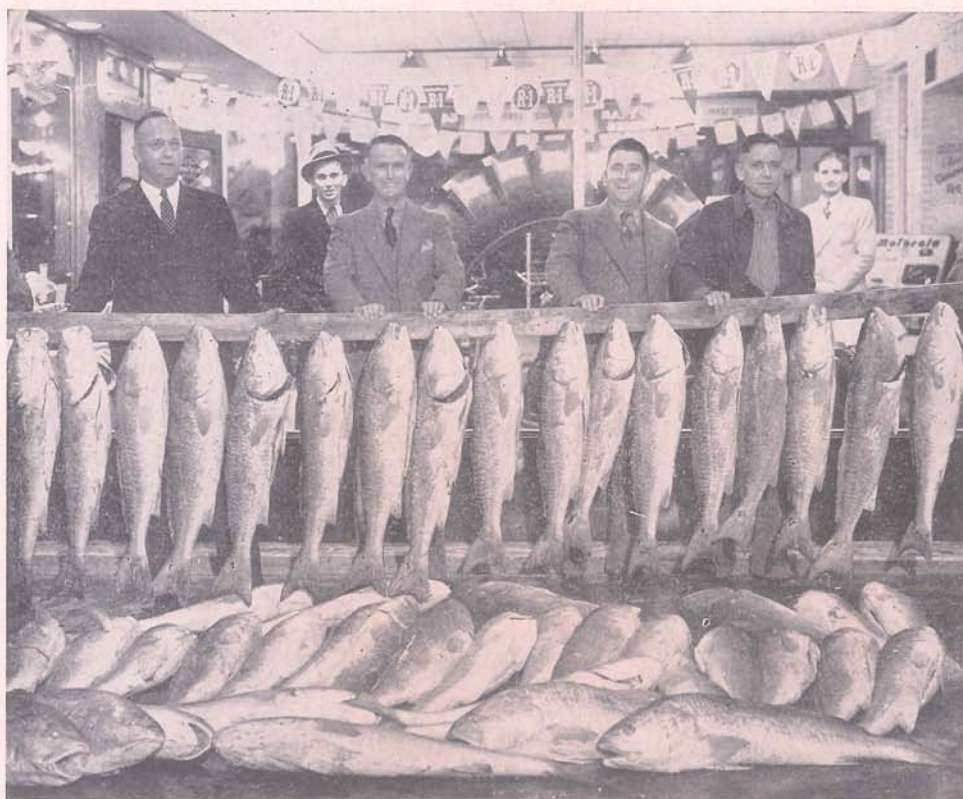
411 Carondelet Building

New Orleans, Louisiana

Telephone: RAYmond 2908

Teletype: N. O. 460





The result of a two-day fishing trip by four men at Grand Isle is shown above. From left to right: N. F. Hertzner, Branch Manager, Goodyear Tire & Rubber Co.; Tom A. Cheney, Local Manager, Goodyear Tire & Rubber Co.; Edward Guedon, Secretary, Service Drayage Co., and James B. Herrin, President Herrin Motor Lines. On this trip, October 15th and 16th, 1937, 44 fish were caught, the largest weighing 54 lbs., the smallest, 26 lbs. The total weight of the forty-four fish was 1300 lbs.

stated their willingness to co-operate. It is the settled policy of all governmental agencies to encourage projects aiming at increased recreational facilities for the people. It seems quite probable that this new road may soon become a reality.

Leaving Marrero, the proposed route proceeds to Lafitte. No road need be built here, since there is already a highway, which is about to be blacktopped. From Lafitte, a new road must be constructed, for a distance of thirty miles. As the proposal now stands, this road will closely parallel the route taken by boats to reach Grand Isle, following the bank of Dupré Cut to Bayou St. Denis, cutting across the marshland skirting Barataria Bay, and finally across a chain of little islands to Grand Isle. If a canal is dug from the vicinity of Lafitte to the Gulf of Mexico, the banks of the canal can be used as the foundation of the new road.

This road will offer magnificent recreational possibilities. Not only will it reduce the distance to Grand Isle by exactly half, but will



## Dunlap Sporting Goods Co., Inc.

138 Carondelet St.

New Orleans, La.

*"It Pays to Play"*

## KETCHUM & SMITH

For Better Optical Service

OPTICIANS

129 Baronne Street

RAYmond 8429

New Orleans

## Eugene Dietzgen Co.

Manufacturers

DRAFTING AND SURVEYING  
SUPPLIES

Blue Prints and Photostat Copies

318 Camp Street

RA. 7121, 7122, 7123 New Orleans

## Bloodworth, Grasser & Dessauer, Inc.

GENERAL INSURANCE

812 Union Street

Telephones:

RAYmond 0317, 0318

CEdar 1859 ALgiers 1176-W

David J. Dessauer Eug. A. Grasser

Jos. Thiebaud

## Kieckhefer Container Company

### The Eddy Paper Corporation

Manufacturers

Fibre and Corrugated Containers  
and Paperboard

640 S. Broad

New Orleans

## WESTERN UNION TELEGRAPH CO.

Don't Write—Telegraph

J. C. JACKSON

Superintendent

## Stauffer, Eshleman & Co., Ltd.

Wholesale Hardware

### Automobile Tires and Tubes

511 Canal St.

MAin 6771

## F. W. MACKIE

GROCER

Magazine and Gen. Pershing

UPtown 1604

New Orleans





A nice catch of speckled trout, caught in the bay waters of Grand Isle. The men in the picture are, left to right: R. E. Bridges, C. C. Clifton and W. H. Black.

in itself afford an interesting trip. It will greatly facilitate the transportation of oysters, fish, shrimp and crabs, as well as oil and other products of Jefferson Parish.

The present road from Marrero to Lafitte is already popular. Running twenty miles through a region abounding in game and fish of every kind, it attracts sportsmen the year around. The picnic-grounds and boating facilities so easily available draw thousands of people each summer. Its pictorial charms are many. Spring brings a wealth of color—purple, blue and copper iris vying with the tender green of new leaves and the flame of budding maple. In summer the glossy oak leaves form arches of grateful shade over the road and through gaps in the trees the cool bayou waters sparkle invitingly.

Below Lafitte, the country changes. The Marrero-Lafitte Road runs through comparatively high land, through farms and forests. The section below Lafitte will be built through low, marsh land, but on a firm foundation of sand. Even the trip across the marsh will be far



**FRIGIDAIRE**

Domestic—Commercial

**Tyler Display Cases****WANDS, INC.**

1530 St. Charles Avenue

RAYmond 0425

MERIT SELLS

**DR. TICHENOR'S  
ANTISEPTIC**Canal, Common, Fulton  
and Front

NEW ORLEANS

**HURWITZ-MINTZ  
FURNITURE CO.**

211 ROYAL STREET

RAYmond 1388 NEW ORLEANS

**Southern Seating &  
Supply Co., Inc.**School Equipment and  
Public Seating

115 Decatur St. New Orleans, La.

**New Orleans  
Barber Supply House**

S. A. Heitkamp

BARBER SUPPLIES

*Grinding Our Specialty*

228 DECATUR

MAin 3599

**Ozone Company, Inc.**Ozone and Abita Mountain Valley  
Mineral WatersPerfection Distilled Water  
Paper Cups

Press and Marais Streets

CRescent 1101 New Orleans, La.

**Neptune Supply Co.**

Marine and Mill Supplies

210 Decatur Street

**VICTOR'S CAFE***In The Heart of the Vieux Carre*

Expert Mixologists in Charge

*Chartres corner Toulouse Street*

MAin 9827





Three bull red fish caught in Grand Pass, between Grand Isle and Grand Terre. The men in the picture, reading from left to right: W. H. Black, R. E. Gunstrum and C. C. Clifton.



Fornet Millett's general store at Grand Isle, where boats visiting Grand Isle dock.



### Royal Beauty Supply Co., Inc.

138 CHARTRES and 308 ROYAL

MAin 3864

We Sell Everything in the Line of  
Barber and Beauty Supplies  
and Equipment

Your Patronage Will Be  
Appreciated

### Geo. B. Matthews and Sons, Inc.

NEW ORLEANS, LA.

Manufacturers of

Horse and Mule Feeds  
Dairy Feeds - Poultry Feeds  
and Mashers

Near Girod and South Liberty Streets  
RAYmond 6975

### Leonard Krower & Son, Inc.

IMPORTERS AND EXPORTERS  
WHOLESALE

*Diamonds, Watches, Jewelry,  
Clocks, Silverware, Art Goods,  
Novelties, Etc.*

NEW ORLEANS, U. S. A.

P. O. Box 330

### CENTRAL FINANCE COMPANY

640 ST. CHARLES ST.

RAYmond 8521 New Orleans

### O. W. SUHREN

BATTERY AND ELECTRICAL  
SPECIALIST

Batteries, Magnetos, Horns,  
Spark Plugs

*New and Used Grease Guns*

708 Julia St. RAYmond 1035

### JOS. T. OWIN

GOLD AND SILVER REFINER  
AND ASSAYER

Manufacturer of Plate, Wire and  
Solder for Jewelers and Dentists

Highest Cash Prices for Old Gold,  
Silver and Platinum

309 Bourbon St. RAYmond 2624  
New Orleans



*Fresh  
Meats,  
Sausage  
and  
Packing  
House  
Products*

ARABI, LA.

FRanklin  
1175

### N. J. NOLAN

ALL KINDS OF INSURANCE

518 Verret Street Algiers, La.

Phone ALgiers 1422





While Grand Isle is not noted for its deer, these fine bucks were killed in the vicinity, near the Jefferson-St. Charles Parish line. The men in the picture, reading from left to right: W. D. Tinney, Resident of St. Charles Parish; Frank Vonder Haar, State Fire Marshal; Leon C. Vial, Sheriff of St. Charles Parish, and Frank J. Ehret, deceased.

from monotonous, for it offers its own variety of beauty, in the lush grasses and flowers of the flat land and the huge live oaks growing on the higher ridges, or "chenieres". The road will pass directly through the Lafitte Field, one of the country's most promising oil districts.

At the end of the road lies Grand Isle, offering everything for a perfect vacation, delicious food, excellent fishing and hunting, and the best and safest surf bathing to be found anywhere.

Not only is Jefferson Parish a unit in desiring this new road, but petitions have been signed by thousands in Orleans Parish and other parishes adjoining Jefferson, asking that this road be built, and it is to be hoped that we will soon have our newer, shorter route to Grand Isle, all in Jefferson Parish.



**WEINER'S**

**Algiers' Leading Furniture  
Store**

137 DELARONDE STREET

ALgiers 2424

**DR. M. O. CAREY**

341 Bermuda St.

ALgiers 1212-W

ALGIERS

**SAMUEL BROS.**

**GRETNA**

Largest Department Store on  
West Bank of the River

*BEAUTIFUL*  
JEFFERSON PARISH

*Home of*  
**WDSU's**

TRANSMITTING PLANT

**WISSER'S CAFE AND  
GROCERY**

334 HUEY P. LONG AVE.

Phone ALg. 9185

GRETNA, LA.

**Neeb's Hardware  
Store**

**HARDWARE AND PAINT**

338 Lafayette Ave.

ALgiers 1988

GRETNA

**MELLING  
Cement Block Works**

ED. MELLING, Prop.

**BUILDING MATERIALS**

ALgiers 2191

GRETNA

**THE  
SEABOARD  
REFINING CO., LTD.**

•  
GRETNA



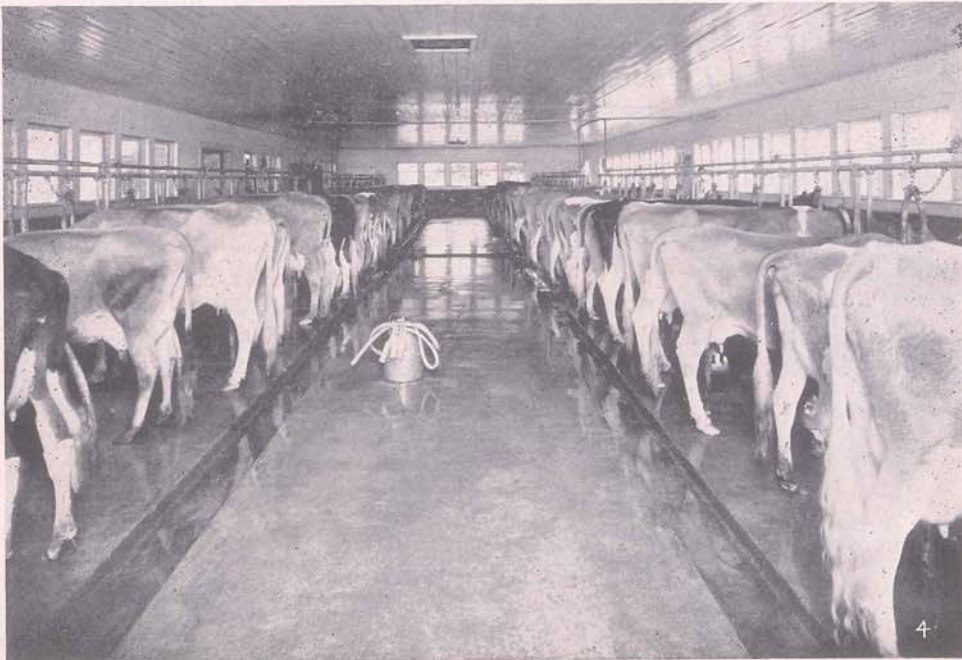
## Agricultural Activities

GEORGE T. GEIGER, JR.  
*County Agent*

The alluvial soil of Jefferson Parish is excellent for the production of vegetables and flowers, and at present more than four thousand acres are under cultivation for truck crops, with approximately 6000 of Jefferson's total population of 45,000 classed as rural. The main enterprises consist of growing of commercial vegetables; the production of dairy products, poultry and eggs; floral culture; cotton; cane and a constantly increasing production of swine.

The advisory board of Jefferson Parish is composed of fifteen farmers and business men, who are called on for advice in matters pertaining to agricultural development of the parish. These same men also serve on the Agricultural Program Planning Committee for Jefferson Parish.

The 273 dairy farms of Jefferson Parish produce approximately 2,500,000 gallons of milk annually, which is bottled, delivered and retailed from house to house in Jefferson Parish and New Orleans by the individual dairymen. These dairymen are classed as "Producer-Distributors" and represented in the Progressive Dairymen's Asso-



Norwood Dairy—one of Jefferson's finest. The cows shown above are an improved Guernsey herd.



**ELLZEY STORES**

E. J. BLANCHARD, Mgr.

Phone ALgiers 9112

601 Lavoisier St.

GRETNA, LA.

**Super Service Station**

S. S. CEMO, Prop.

**TEXACO PRODUCTS****MARFAK GREASING**Electrical Repairs  
Auto Accessories—Brake Linings  
Batteries**ALL WORK GUARANTEED**

4th and Delhondé Sts.

ALgiers 9194

GRETNA, LA.

For Any Form of  
INSURANCE

See

**LYNN M. RODGERS**

620 SECOND STREET

ALgiers 2134

GRETNA

**BERENSON'S  
Hollywood Theatre**

R. C. A.

High Fidelity Sound

ABE BERENSON, Mgr.

Newton and Third Sts.

Gretna

**Brunies' Restaurant**

Established 1897

Joseph Baricev, Prop.

Chicken Dinners, Western Meats,  
Sea Foods Our Specialty**LUNCHES DAILY**Accommodations for Banquets  
and Private Parties700 Second St. Phone AL. 9200  
Two Blocks from Gretna Ferry**JAKE FALCONE'S  
GROCERY**

J. FALCONE, Prop.

Fancy and Staple Groceries

417 Lafayette Ave.

GRETNA

STOP AT

**MIDWAY INN**For the Best in Foods, Liquors  
and Service—Dancing

3322 FOURTH ST.

UPtown 7491

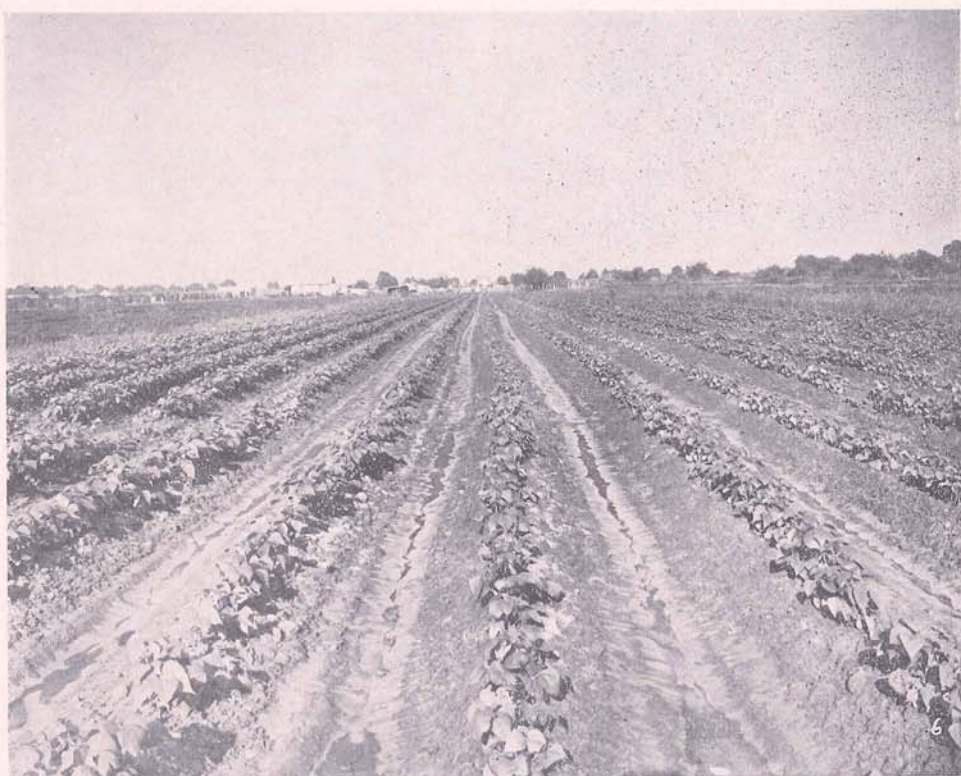
Harvey, La.

**Dave Meyer's Moss Gin**•  
*Dave Meyer, Prop.*  
•

P. O. Box 622

Marrero





An early crop of bush beans, produced on a farm near Waggaman, in Jefferson Parish.

ciation. This association aids greatly in furthering better methods of dairying and protects the dairy industry of the parish.

A Herd Improvement Association exists in the parish for assisting dairymen in the movement for better stock. Pure bred bulls of excellent type are constantly being brought into the parish for individual dairymen through the courtesy of the Louisiana State University. There has been great progress in the dairy industry due to this movement.

Practically 75 per cent of the dairymen are now raising their own stock. In combination with this project is that of growing soybeans for supplying hay to meet the needs of the individual dairymen, and growing and grinding corn for silage. The outcome of these practices has been the substitution of home-grown feed for commercial feed, resulting in an appreciable saving. Approximately 50 per cent of the dairymen in this area have adopted this practical and profitable method.

The Mississippi River Bridge, located in Jefferson Parish, has brought the rural people of the west bank in closer contact with the markets of New Orleans. As a result, there has been further development in the truck farming in that section. On the east bank, greater shipments have been made from Kenner, which is gradually regaining



## HARVEY LUMBER YARD

F. EBERHARDT, Owner

Uptown 4204

Harvey, La.

## Martin Butirich's RESTAURANT AND BLACK MARBLE CAFE

LUNCHES, SHORT ORDERS AND  
DRINKS OF ALL KINDS

Private Dining Rooms

129-131 HUEY P. LONG AVE.

Algiers 9103

GREINA

*DINE and DANCE*

## Bridge Circle Club

Foot of Huey P. Long Bridge  
Westside

*We never close*

## WE-GO-INN

Sam Gilardi, Prop.

Dance and Dine Every Night

Sandwiches and Drinks of All Kinds

Walnut 9209

On the Hill at Westwego Ferry

Landing, Westwego, La.

On The Hill At Westwego

## E. Klause's New Beer Garden and Bar

*Dancing Every Night: Free*

*Tasty Sandwiches, Hot Chilli and  
Ice Cold Drinks of all kinds*

*Come up and see us sometime*

Call Walnut 9225

## CHAS. PIZANI'S BEER GARDEN

*Cross Ferry and Look for Sign*

*On Right Hand Side of Road*

BARATARIA

DANCING

## Abdo's Drug Store

*Quality and Service*

*Jefferson Highway and Clay,*

*Kenner, La.*

Phones 207 and 9134

PETE FERRARA, Mgr.

## HARAHAN SERVICE STATION



HOOD

Tires and Tubes

Wrecker Service

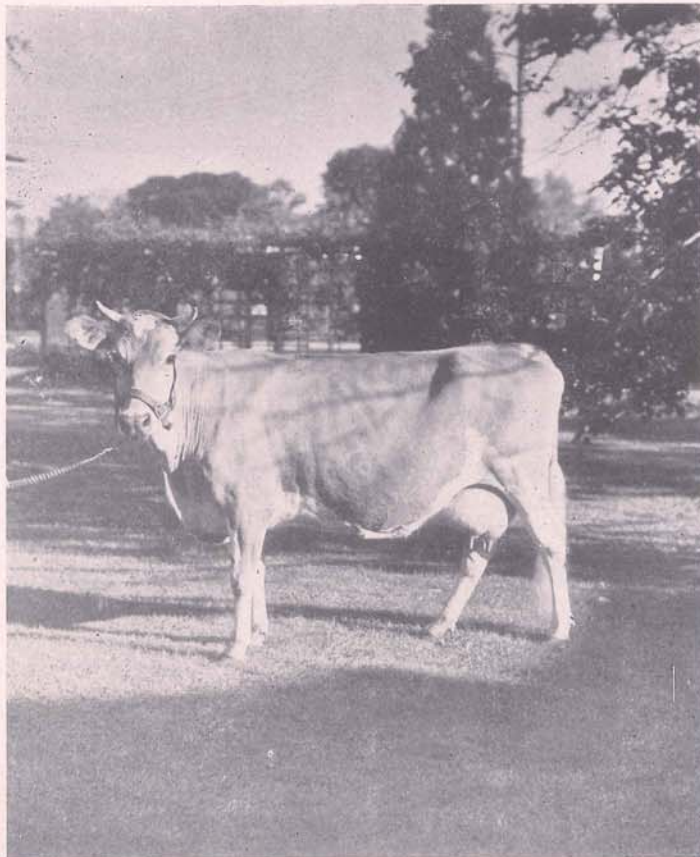
Kenner 9110



its former position as one of the leading vegetable shipping points in the south. The South Louisiana Vegetable Shippers' Association is composed of shippers organized to ship co-operatively the products grown in this area.

Considering its importance as a source of income, the raising of poultry can be placed third in comparison with the other agricultural enterprises of the parish. Like dairy products and truck crops, there is a ready market for all available poultry and eggs in the New Orleans markets. In order to elevate poultry raising to its proper place, raising of feed rather than the use of commercial feed is advocated, and is now a common practice of most of the poultry farms.

The raising of swine is an activity which is growing rapidly in our parish, especially since the farmer has realized that all the feed needed can be supplied by culled, inferior vegetables and by-products collected from different sources in New Orleans. Practically all hogs in the parish have been inoculated to prevent cholera, which has previously caused farmers great losses. Many pure-bred male and female hogs are being brought into the parish. Duroc-Jerseys are prevalent



This Guernsey cow, owned by Norwood Dairy, at Marrero, has produced 14,571 pounds of milk and 672 pounds of butter in 365 days for the state championship of 1937, in class DD (3 1-2 to 4 years olds).



**YOUR FRIEND**  
**Rose Petroleum Co.**

**We Sell for Less**  
**Jefferson Highway and**  
**L. & A. R.R. Crossing**

**Rene's Chicken Inn**

**Delicious Chicken Dinners**

1007 Jefferson Hy.  
CEdar 9190      Jefferson Parish

Peter Baldwin, Prop.  
**COMET INN, INC.**

**Sea Food Our Specialty**  
**WINES AND LIQUORS**  
**Popular Prices**  
**Large Parking Space in Rear**  
**Free Dancing      Phone CE. 9162**

**Bowers Feed Store, Inc.**

**COAL**

*S. Claiborne and Southport*  
Jefferson Parish

**FRANZ BROS.**

**COOPER TIRES**

1700-02 St. Charles Avenue  
600 N. Claiborne Avenue  
NEW ORLEANS  
Jefferson Highway      Southport

CEdar 9148

Auto and Dining Room Service

**Messina's Suburban Inn**

We Specialize in SPAGHETTI  
DINNERS and MUSSOLINI  
SANDWICHES  
JEFFERSON HIGHWAY  
JEFFERSON PARISH

**RAINBOW INN**

**LARGEST PARKING GROUND**  
**ON JEFFERSON HIGHWAY**

*We Serve the Best*  
*With the Best of Service*

**WE NEVER CLOSE**

**PINES INN**

Shrewsbury Road and Airline Highway

Sandwiches and Drinks of All Kinds  
**Large Parking Grounds**





Noon-day rest, on the river batture in Shrewsbury. Jefferson dairy herds are being constantly improved.

at this time, with Poland-Chinas not far behind. Through the courtesy of Sears-Roebuck Company, who realized the possibilities of hog production in Jefferson, ten pure-bred Poland-China Gilts and a boar, all of selected stock from Illinois, were placed with 4H Club Members in various sections of Jefferson Parish.

Rating among the higher agricultural enterprises of the parish is that of floral culture. Many florists are engaged in the production of flowers, some of which find a market in New Orleans, while others are shipped to points in the north. Along with this has come lily-bulb production, which has proved successful. Dr. Julian Miller, of Louisiana State University, has been working constantly during the past few years on the development of disease resistant varieties. In the course of time, Jefferson Parish will share in the three million dollar annual lily-bulb production now claimed by China.

The parish has taken a step forward in the welfare of its citizens in regard to beautification of home grounds and gardens by supplying spraying and dusting materials, implements and fertilizers for use under the direction of the County Agent, stimulating the movement toward rural and city beautification.

Due to mosaic disease, which affects sugar cane, Jefferson Parish, like other southern parishes, had suffered the loss of its leading staple crop. However, with the aid of experiment stations, mosaic resistant varieties of cane have been produced and introduced into the parish. As a result, we find cane again being grown on quite a large scale near the St. Charles-Jefferson Parish line, from whence it is trucked to a near-by mill in St. Charles Parish for grinding.



**METAIRIE MARKET**

Choice Western Meats, Fruits,  
Poultry, Vegetables and  
Italian Products

623 Metairie Road      CEdar 9139

**Lake to River Land Co.  
Harlem Realty, Inc.**

"Harlem Parkway"  
"Harlem Ave. Subdivision"  
"Claiborne Parkway"

R. F. BARLOW, Mgr.

810-A Maison Blanche Bldg.

**MASSET'S TAVERN**

*Sandwiches—Sea Foods*  
*Wines—Liquor*

We Deliver

Phone CE. 9161—825 Metairie Rd.

Metairie, La.

**FITZGERALD'S  
LAKE HOUSE**

Sea Foods a Specialty

—•—

East End

Jefferson Parish

**SWANSON  
RESTAURANT**

"Best Hard Crabs South"

•

WEST END OF  
WEST END PARK

**GROVER'S PLACE**

◆ ◆

SEA FOODS OF ALL KINDS

◆ ◆

EAST END  
JEFFERSON PARISH

Dry Goods  
Notions  
Ladies' and  
Children's  
Ready-to-Wear

SAVE A TRIP TO TOWN  
Buy What You Want In

**STEGER'S**

549 Metairie Road      CEdar 9145  
Men's Work Clothes

Shoes  
Toys  
Novelties  
School  
Supplies

**F. J. VILLARS & SONS**

ROOFING CONTRACTORS

"Villars Roofs Fool the Rain"

609 Metairie Road

Phones CEdar 1212—1250

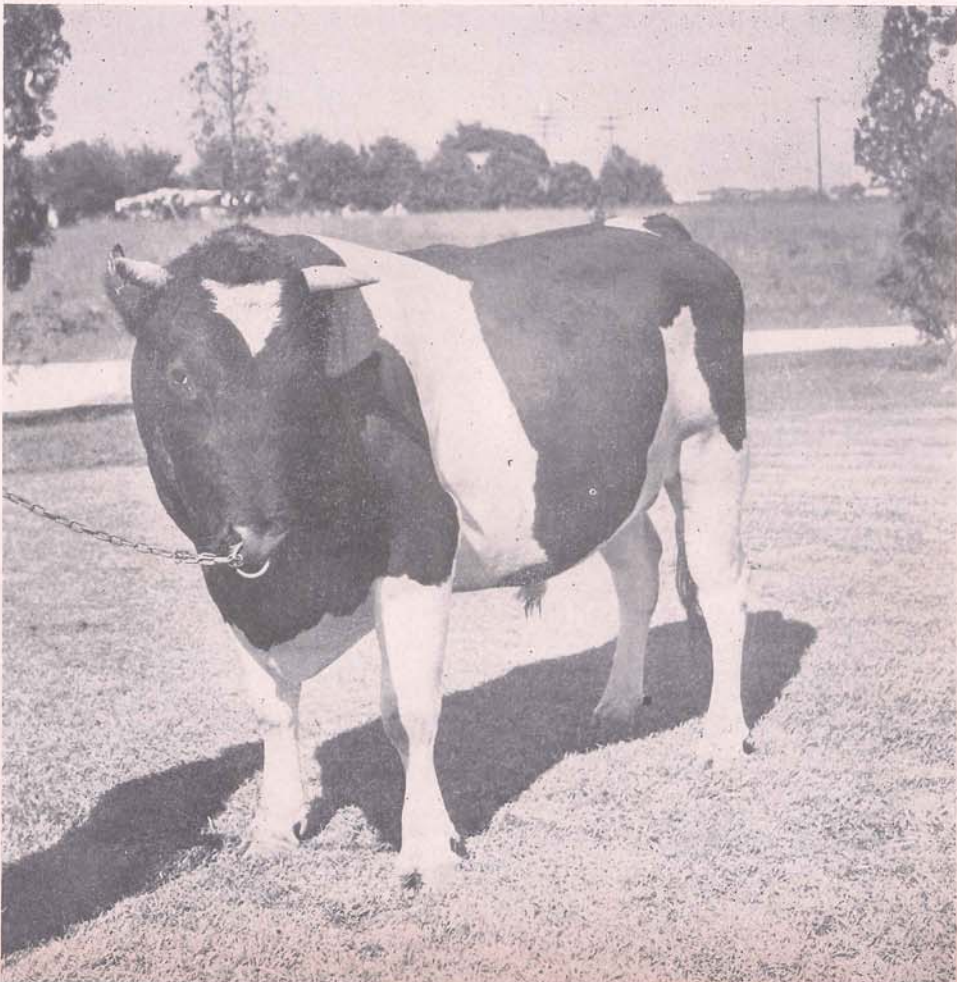


Although cotton is not grown on an extensive scale in the parish, our land seems most suitable. It is not uncommon to witness a production of a bale per acre or better on the recently drained areas in the parish.

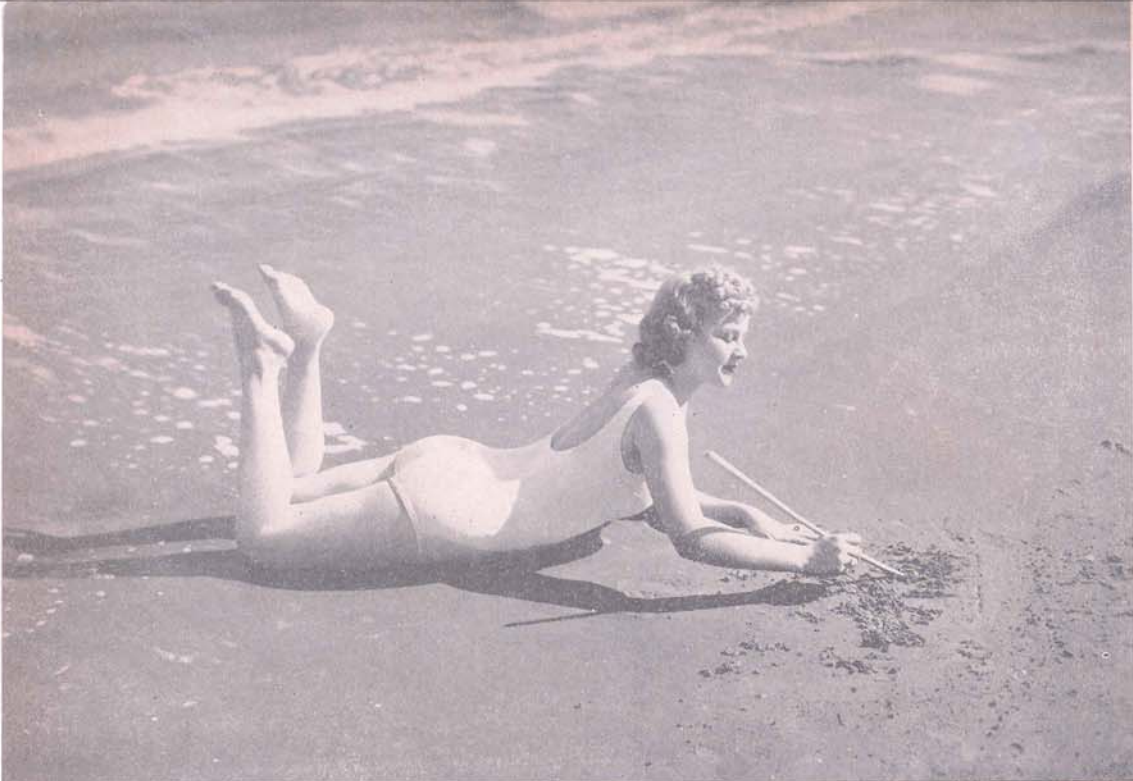
There are approximately 400 members enrolled in the Jefferson Parish 4H Clubs. Their projects consist of gardening, poultry raising, bee keeping, swine raising, dairying, sewing and canning. For the past three years there has been an annual Parish Achievement Day, conducted at Hope Haven during the spring, where members are given an opportunity to display their products and knowledge of agricultural activities. Contests are held and the winners are rewarded by competing later in the state contests at Baton Rouge. This 4H work is carried out in the schools with the help of men and women who are classed as local leaders, the majority of these being teachers in the schools.

Along with the Agricultural Adjustment Administration Program whereby farmers receive benefit payments in crop control programs, there is also in Jefferson Parish the Farm Security Administration, which affords farmers the opportunity of borrowing money from the government at a low rate of interest.

A Holstein bull calf from Louisiana State University, raised at Hope Haven.







Miss Rita Mae Gegenheimer, Miss New Orleans of 1937, one bathing beauty who isn't afraid of the water.

## Youth in Jefferson

ANNIE LAURA HOWARD

*Associate Editor*

### Miss New Orleans—Of Jefferson Parish

On July 16, 1937, at Pontchartrain Beach, there gathered some 50,000 people, the largest number ever assembled in New Orleans for any contest, including football and baseball. Their purpose in being there was to choose the loveliest lady in the Crescent City from the hundred contestants for that honor.

Past the judges' stand there passed blonds, brunettes and titians, pleasingly plump, delicately slender, divinely tall and charmingly small—one hundred examples of that pulchritude for which New Orleans is famed.

The applause rose and fell. The eight skilled judges gazed and pondered, and finally chose—a delightful bit of femininity five feet, three inches tall, a slender, blue-eyed blond—sixteen year old Rita Mae Gegenheimer, of Gretna, La.

Today finds Rita Mae untouched by her thrilling experience, poised and confident, but without the vainglorious self-love that is too often the result. A charming, thoroughly modern girl, she manages to contradict two ancient adages, for she is undoubtedly a smart blond, beautiful but not dumb.

So, say we, hats off to Miss New Orleans from Gretna—long may she reign!

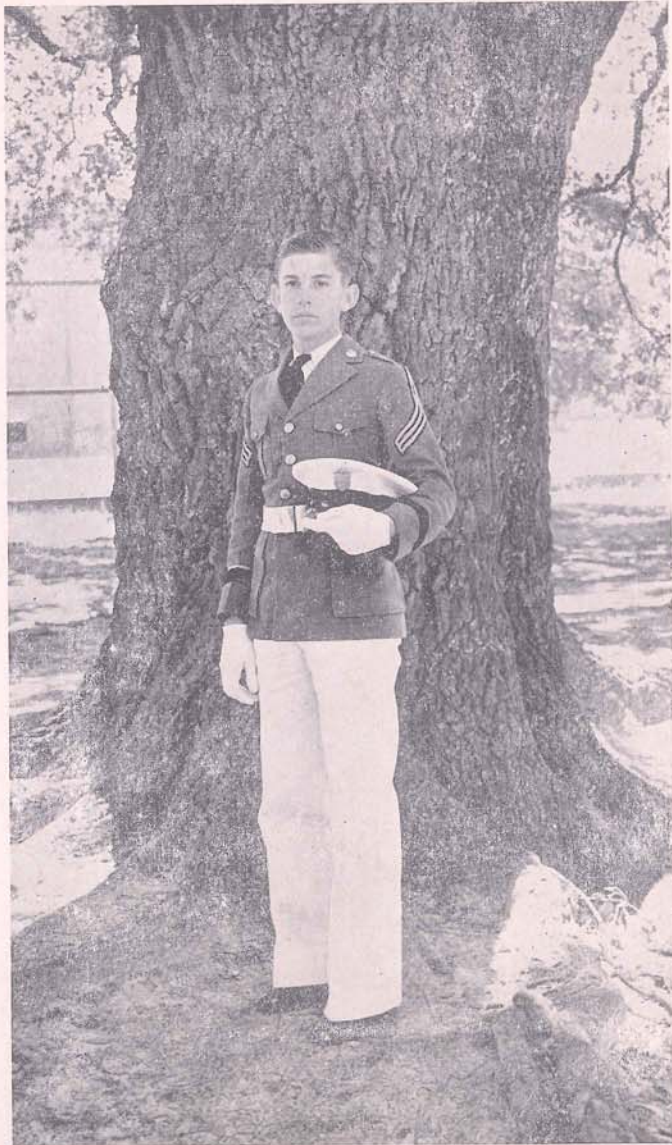


## CADET WEAVER TOLEDANO

Jefferson Parish, while not exactly what might be termed a military parish, takes pride in the achievements of one of its more soldierly sons, Weaver Toledano, of Kenner.

A member of the graduating class of the Gulf Coast Military Academy, the South's best military school, Cadet Toledano is a sergeant in Company C, of which he has been a member since his enrollment in the school.

While yet a sophomore, Weaver gained a signal honor. At Commencement in 1936, meeting sophomores, juniors and seniors in the



Cadet W. R. Toledano. Now a senior at Gulf Coast Military Academy, Cadet Toledano in his sophomore year won the gold medal as best-drilled cadet in the school.



individual competition for the Manual of Arms, he won the gold medal as the best drilled cadet in the whole Academy corps.

To quote a letter from the Gulf Coast Military Academy, "Cadet Toledano has risen through the grades from private to sergeant, and is a fine soldier." Which proves what we have always said, Jefferson produces fine youngsters, and Cadet Weaver Toledano is a splendid example.

### FREDDIE HAAS

A slender, bronzed Jefferson Parish youth who looks down upon you from an altitude several inches above six feet may be seen nearly every evening following a little white ball over the fairways of the Colonial Club near Harahan. From his modesty and disinclination to speak of himself, you may not realize that he is one of Louisiana's greatest contributions of all time to golfdom. But if you follow golf



Freddie Haas, Jr., one of the South's leading golfers, and another source of pride to Jefferson Parish.



news in the newspapers, you will probably recognize him as Fred Haas, Jr., aged twenty-two.

He has a large room full of trophies, huge, shining and splendid ones, but you won't learn that from close-mouthed Freddy, who like his father, Fred Haas, Sr., Colonial "pro" believes that golf should be played with clubs. But if you follow the papers, you already know that Freddy was nominated in January one of the eight members of the American Walker Cup team who will journey to Scotland this summer to engage the British team on the historic St. Andrew's course, June 3-4; and you also know he has won the Canadian Amateur, Southern Intercollegiate and National Intercollegiate championships and worn for two successive years the Southern Amateur and Western Junior crowns. He is also the only man to ever score a grand slam, winning the New Orleans and Louisiana State titles two years in succession, and is the youngest golfer, next to Bobby Jones, who did the trick at sixteen, to win the Dixie championship. Freddie was eighteen.

Freddie has played in something more than 250 tournaments, and won more titles than he remembers, but of all the honors he has won, his family are proudest of this telegram:

"Fred Haas,  
Colonial Country Club,  
New Orleans, La.

You should be a very happy man tonight for in addition to your son winning the premier golf honors of Canada he has won our hearts as well through his charming personality and outstanding sportsmanship (stop) On Tuesday we admired his golf (stop) On Wednesday we liked him (stop) On Thursday we realized what an expert he is (stop) On Friday we selected him for the finals (stop) Today the champion has endeared himself to everyone in Winnipeg with whom he came in contact (stop) Hearty congratulations.

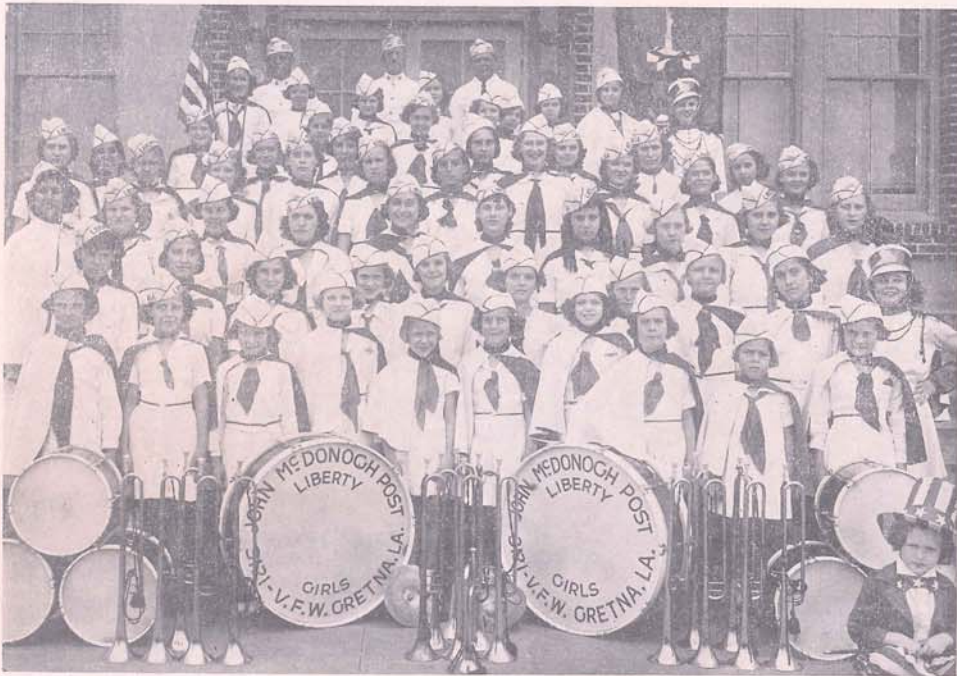
(Signed) The Tourist and Convention Bureau of Manitoba,  
H. G. Persse, President."

### THE LIBERTY GIRLS

The Liberty Girls, organized and sponsored by John McDonogh Post No. 3121, Veterans of Foreign Wars of the United States, on September 23, 1934, in the city of Gretna, ranks high among the many youth organizations sponsored by the Veterans of Foreign Wars in the United States.

The original membership was placed at forty-eight, or one girl for each state. Since then, this quota has been increased from time to time to take care of new members, the limit finally being fixed at two hundred. The present membership of two hundred girls between the





The Liberty Girls. An organization of 200 girls, it is the largest of its kind in the United States. Its drum and bugle corps is champion of the South.

ages of eight and sixteen makes this organization the largest of its kind in America.

There are no written rules or laws. Each girl is placed on her honor. The girls are taught many useful things, including first aid.

The Liberty Girls Drum and Bugle Corps of forty is the champion girls' drum and bugle corps of the south. Their activities are many, including participation in the annual Armistice Parade in New Orleans, the Westside Carnival Parade, Gretna School Parade, annual Kite Parade and many others.

#### ADAM VINCENT BILLIOT

When a man of the bayous paddles a pirogue it is an affair of grace and beauty. The tiny shell of a boat skims smoothly over the water, the paddle flashing. But when one not bred to the bayous first tries his luck! The pirogue is no longer a boat, but a cross-grained, cantankerous piece of wood, imbued with one flaming desire, to dump the luckless amateur into the very wet and watery bayou.

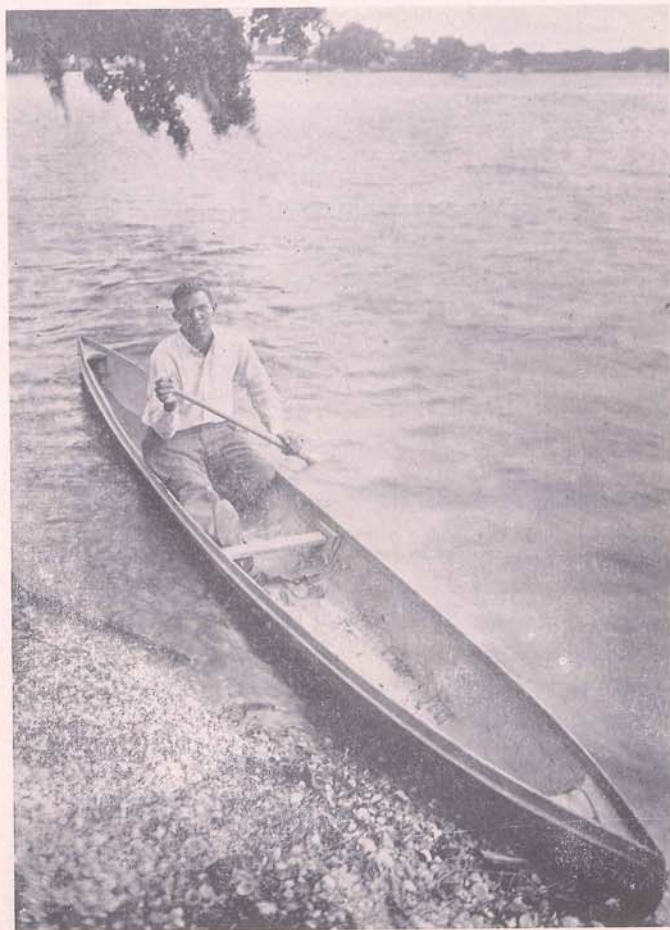
Of course, you may be able to paddle a pirogue. You may even be able to paddle a pirogue very creditably. But if you should say that you can paddle a pirogue at the rate of eight miles an hour, or an average of fifty strokes per minute, you are either a superman, a liar, or Adam Vincent Billiot. For that is exactly what this eighteen year old Baratarian can do.



For two years running, young Billiot has captured first prize in the annual pirogue race. In 1936, he finished the 4.7-mile course in forty-eight minutes and seven seconds. In 1937, he broke his own record, cutting his time to thirty-five minutes and nine seconds.

The 1937 race was particularly exciting. Taking the lead at the beginning of the race, at the third mile Billiot led the field by 350 yards. Here he stopped a moment, turned, and waved the others on. In the last mile he increased his speed, raising his paddling to fifty-six strokes per minute. At the finish his lead was nearly a quarter of a mile.

It is almost time for the 1938 pirogue race to be held. And in view of past performance, our money is down on Adam Vincent Billiot to again paddle off with first prize.



Adam Vincent Billiot—piroque paddling champion of the world.





1937 State Champions of Junior American Legion Baseball. Reading from left to right, standing: Gus Schwarz, 1st Vice-Commander, David W. Weidman Post No. 64, of Gretna; LeRoy L. Hall, Commander, Metairie Post No. 175; Ronald Fresh, Assistant Coach; S. J. Granjean, Edward Pepper, State Representative Alvin T. Stumpf, Sponsor; Leonard Sickinger, Thomas Flaherty, Co-Manager; Forest Fresh, Coach; H. L. Simoneaux, Past Commander Metairie Post; Jacob Huber, Past Commander Weidman Post. Middle row: Vincent Savona, Bat Boy; Warren Livaudais, Fred Barocco, Joe Ovella, Durelle Couey, P. J. Nagele ( of 1936 team); Jos. Mongogna, Harry Bush, Bat Boy. Sitting: John Hodgson, Tony Gennero, Captain; Blaise Danos, Louis Thibodeaux, Mascot; Louis Daigle, Louis Blanda and Sam Demma. Insets: Hon. J. J. Holtgreve, Sr., Past Commander, Metairie Post, Manager; and Pershing (Pete) Thomassie. Absent from picture: Second District Commander Fred Simonson; Louis Vicknair, Commander Weidman Post No. 64, and Alex Barocco.

### STUMPF JUNIOR AMERICAN LEGION TEAM

A list of Jefferson's champions must necessarily include the Stumpf Junior American Legion Baseball Team, State Champions for 1937. Although officially the best in the state, this team was prevented from going farther afield and securing still greater honor solely by a question of eligibility.

In the annual Junior American Legion Baseball League, a national affair covering every state in the Union, the State of Louisiana is divided into eight districts. The Stumpfs won their Second District Championship easily, defeating the Norco team in the first three of five games.



In the play-off for the First-Second District Championship, the Stumpfs defeated the First District Champions, the Zatarain Papooses of New Orleans, thus winning the right to continue to play for the State Title. At this point, the eligibility of Joseph Mongogna, of the Stumpfs, was questioned. Mr. Larry Fox, Louisiana State Chairman, ruled Mongogna eligible, whereupon the Zatarain officials went over Mr. Fox to the National Chairman, who ruled the player ineligible.

However, since Mr. Fox had the right to name the team to play further, he named the Stumpfs, who next met Baton Rouge, the winner of the Third-Sixth District Championship, in a three game series. The Stumpfs won the first two games, the first at Baton Rouge and the second at Hi-Way Park in Jefferson Parish.

There remained only Opelousas between the Jefferson team and the State Title. The first game was played at Hi-Way Park, and the Stumpfs won. The next was played in Opelousas. This game proved that our team had what it takes to make champions. Trailing by five runs in the eighth inning, and faced by the possibility of playing a third and final game in enemy territory, the boys pushed over seven runs to take the lead. In the last half of the inning, Opelousas scored again, to come within one run of tying the score. But Luck was against them, and the Stumpfs were State Champions.

They were, however, barred from further competition for the National Title by the National Chairman. The Zatarain Papooses were chosen to represent the state in the National games, only to lose to East Lynne, Massachusetts.

The Parish of Jefferson is grateful to Mr. Alvin T. Stumpf, through whose unflagging efforts and grim determination our boys were able to win at least the State Championship, and we hope that in 1938 our Jefferson boys will win not only another State Championship, but the National Championship as well. If they don't, we know they're good enough sports to take it on the chin and grin. And that goes for all our youngsters, big or little, girls or boys. In other words, we think they're swell. And don't contradict us unless you're looking for trouble.



CEdar 9159

Day and Night Service

**THE PINES SERVICE STATION****SHELL PRODUCTS EXCLUSIVELY  
TIRES TUBES ACCESSORIES**

Metairie, Shrewsbury and Airline Roads

N. H. LAZARONE, Prop.

Wrecker Service



## Harvey Canal Turns Day Dreams of Progress Into Reality

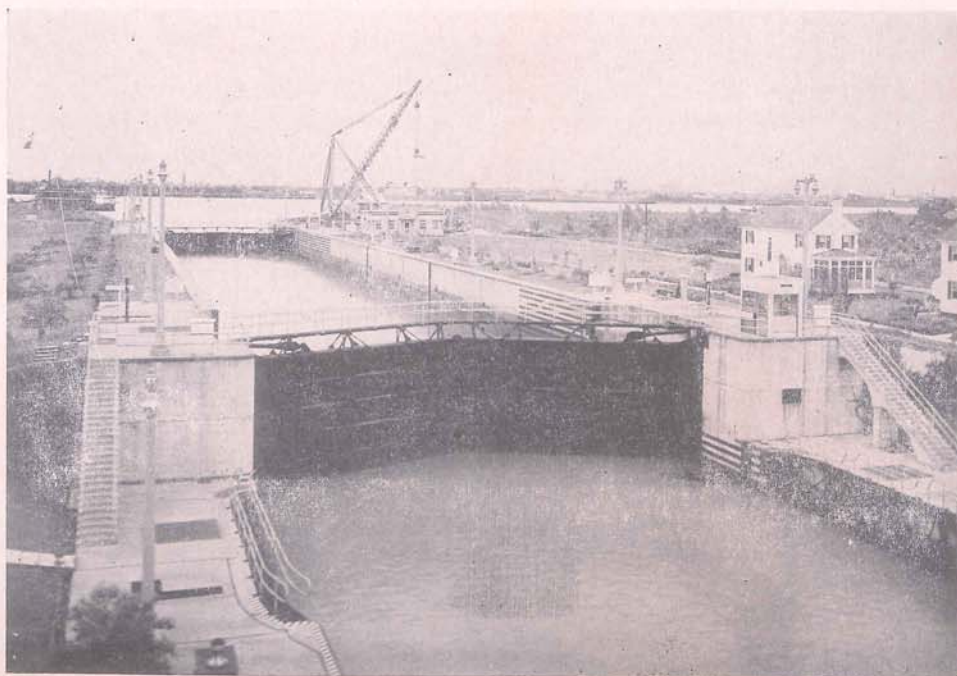
C. O. HOOPER

*Engineer and Builder*

From the Mississippi River at Harvey, Louisiana, to Galveston, Texas, a distance of approximately 365 miles, stretches the United States' Intracoastal Waterway, familiarly known to residents of Jefferson Parish as "Harvey's Canal."

A few years ago, it required approximately six hours to effect the transfer of a towboat and five barges from river to canal. Once within the canal, boat and barges proceeded cautiously down the narrow channel, often impeded by thick mats of water hyacinth. The only signs of human life were an occasional moss-picker's shack, or the moss-picker himself pausing on the banks to watch the towboat's slow progress.

With the United States' purchase of Harvey Canal as the Lower Harvey Route of the Intracoastal Waterway, all this was changed. In 1933 a modern double-gated lock was installed at the confluence of the Harvey Canal and the Mississippi, reducing the time needed to transfer towboat and barges from six hours to twenty minutes, and



The Harvey Lock, where the Intracoastal Canal joins the Mississippi.





An oil storage tank on the Intracoastal Canal in Harvey. The odd shape of this tank allows more volume.

the canal itself was widened and dredged to a uniform depth to accommodate the greatly increased traffic.

At one time, the only commerce the canal knew was an occasional boatload of moss or cordwood. The present finds it teeming with life undreamed of a scant ten years ago. Each day sees a varied and colorful fleet move through the canal — shrimping fleets about their business, great trawls hanging limp from their masts; towboats and barges bound for Texas; pleasure craft speeding toward the fishing grounds of the Gulf. From Texas come barges laden with oil from refineries for bulk plants in the parishes of Jefferson and Orleans, while Galveston sends barges heaped high with golden mountains of sulphur, bound for the markets of the middle west and Chicago. Scores of other boats pass, some with a rush and a swirl of foam, others chugging along slowly, each absorbed in its individual pursuit, whether business or pleasure.

The commerce through Harvey Lock has been greatly increased by the major oil companies operating and developing the fields at Lafitte and Leeville. These oil fields have also aided in bringing the land bordering the canal into prominence as an ideal location for businesses and industries supplying materials used in the development of oil producers, as is illustrated by the recent acquisition of Harvey property by dealers in heavy timber, piles, cement and derrick assemblies, and the rapid building activities now under way along the



east bank of the waterway, which is adequately served with electric power, railroad facilities and a parish highway.

The canal offers unsurpassed advantages to companies dealing in clam shells. The Intracoastal Canal gives easy access to the numerous shell reefs located throughout the region of lower Jefferson. Shells may be mined from these reefs and transported by barge to any point along the canal, from New Orleans to Texas, to be used in building and repairing roads. Dealers in shell find the east bank of the canal adjacent to Harvey particularly convenient. Here the shell may be stored for future use; shipped directly by barge through the Harvey Lock into the Mississippi, and so to all that part of the United States through which the river and its tributaries flow; or loaded into trains and trucks, to be transported overland.

Industries which have grown up through the increased activity surrounding the canal at Harvey are now operating on this stream, adding their quota toward making Jefferson Parish a greater industrial center. More men are employed and families established, increasing the buying power in the immediate vicinity. Such development naturally results in increased prosperity within the parish at large.

To those of us who have worked toward this new industrial center, its growth from the comparatively useless cow pasture of ten years ago to the industrial position it now occupies is indeed gratifying—day dreams turning into reality before our eyes.

—o—

### **Jefferson—The Parish With a Future**

(Continued from Page 11)

romantic spots in Jefferson Parish. With its completion the people of Jefferson Parish and the surrounding territory will be able to drive to Grand Isle in an hour and a half, to enjoy the best and safest surf bathing in America.

Because we believe it to be the most efficient and shortest channel to the balance of America, we are sponsoring the proposed Inland Port of Jefferson. With the completion of this canal, a ship can be unloaded and loaded at the Inland Port of Jefferson at a great saving.

It should not be forgotten that the Jefferson Parish Police Jury aided materially in the building of the Intracoastal Canal, furnishing the United States government with \$30,000.00 rights-of-way free of charge. Although no such amount has been budgeted or arranged for, the Police Jury went ahead and met all government demands out of the general fund, without asking the people to vote a bond issue to cover the cost of these rights-of-way.

The policy of the Police Jury has always been progressive, and with the continued co-operation of our people and our industrialists, we hope to see Jefferson grow even more prosperous and prominent than it is today.



## Jefferson Homes and Gardens

---

HARRY PAPWORTH  
*Nurseryman and Florist*

Jefferson Parish has always been proud of its homes and gardens. Today, more than ever, there is reason for that pride. For today finds Jefferson with more beautiful homes than ever before.

Many of the old plantation homes remain, reminders of the splendors of ante-bellum days. One of these is the old Zeringue home above Westwego, and another is Elmwood, just below Harahan, situated in a grove of thirty-two magnificent live oaks.

In the restricted residential sections in Metairie, we find scores of beautiful homes, beautifully landscaped. One of the loveliest of these is the Newman home in Metairie Club Gardens. In the springtime especially, this garden delights the flower lover. The huge azaleas blaze with color, not a leaf or twig to be seen—camellias bear their wealth of waxen blossoms among their glossy leaves, and scatter the ground beneath with brilliant splashes of fallen petals—bridal wreath and dogwood gleam in snowy splendor. In the rear of the house stretches a lawn, at the end of which is an iris-fringed pool, banked with camellias and azaleas. The Marechal Neil which climbs in golden



Azaleas and cypress trees form a background for the iris-fringed pool of Mrs. Harold W. Newman, in Metairie.





A silver pheasant one of the many beautiful birds included in the collection of Mr. R. T. O'Dwyer, in Southport.

glory to the second story of the house fills the air with its sweet, spicy scent.

In Southport, we find two of the most unusual gardens in Jefferson. One is that of Mr. Robert Otterman. Here is a vegetable garden where corn and beans vie with roses and azaleas.

The other is that of Mr. R. T. O'Dwyer. To enter the O'Dwyer garden, one passes up a driveway, thickly and beautifully bordered with Japanese azaleas of every color. At the end of the driveway is a huge rustic fountain, at night illumined by colored lights. Immediately back of this fountain is the feature which makes Mr. O'Dwyer's garden unique—a collection of fifteen hundred birds of more than a hundred varieties, the largest private collection in the United States. Here are birds from all over the world, from Europe, Africa, the Orient and the continents of North and South America. Mr. O'Dwyer takes great pride in his birds, and every step is taken to insure their well being, even to the raising of special worms and grubs for a part of their diet. This aviary is also under the supervision of the United States Biology Survey and the Louisiana State Department of Conservation, with Mr. O'Dwyer as custodian.

The possibilities for gardening in Jefferson are almost unlimited. Whether your pocketbook is a millionaire's or just an average workingman's, your garden can be a source of pleasure and beauty.





Farnham Place, a residential subdivision of Metairie. The homes in this section are among the most beautiful in New Orleans and its vicinity.

Flowering shrubs and trees add greatly to the beauty of any garden. Azaleas need an acid soil. A good soil for them can be obtained



Parakeets of every imaginable color are found by the dozen in Mr. O'Dwyer's remarkable aviary.



by mixing three parts of German peat moss to one of good white sand, and adding 1 oz. yellow meal to each gallon of soil. During the summer sulphate of aluminum can be applied to them at the rate of about 5 oz. to the square yard, well watered in, the first time about April and again about July.

Camellias will thrive in a soil composed of two parts German peat moss to one of good top soil or river sand.

Hibiscus, plumbago and all the magnolia family thrive here, together with innumerable annuals and perennials.

To city dwellers, accustomed to living in homes with tiny garden plots, or apartments with no garden space at all, Jefferson Parish holds a great attraction, for here is the opportunity for the home and garden of one's heart's desire, within easy reach of the city and within easy reach of the average man.

—o—

### Kaleidoscopic Jefferson

(Continued from Page 103)

Mississippi, as part of the second port of the United States, and the terminus of the Intracoastal Canal is located within its boundaries.

Statistics attest to the fact that there are 273 dairies within its borders, producing approximately 2,500,000 gallons of milk annually. It is also said that seventy-five per cent of the local nursery stock and flowers sold in the New Orleans floral shops are grown in Jefferson Parish.

Statistics, however, do not have a genuine appeal for the average person, and no amount of mere figures could show the real progress that is being made in Jefferson at this time. More and more are its citizens becoming cognizant of the wealth of resource about them. Rapidly are they learning to make the most of the gifts which Nature has bestowed.

Encouraged by the ten-year tax exemption plan inaugurated by Governor Richard W. Leche as a part of the industrial program of the state, new industries are rapidly coming into prominence, with an increase in business activities as the immediate result. Among the industries which have expanded within the last few months are: Johns-Manville Products Corporation, Great Southern Box Company, Inc., Hercules Powder Company, American Distilling Company, International Lubricant Corporation, Southern Shell Fish Company, Continental Can Company, American Creosote Works and others.

It is not difficult to realize that Jefferson is well on its way to greater heights in industrial progress. Further success and greater wealth seem inevitable. But we are sure that no matter how industrialized it may become, Jefferson will remain much the same as always, picturesque and friendly, with happy memories of the past and bright hopes for the future.



## Fourth Jefferson Drainage District

*Sub-Drainage Districts 1-2-3-4*

JUSTIN F. BORDENAVE

*Secretary-Treasurer*

That part of Jefferson Parish on the east bank of the Mississippi River, extending from the Orleans Parish line to the St. Charles Parish line, bounded on the north by Lake Pontchartrain, has an area of 28,000 acres. However, up to the year 1913, only about 8000 acres was under control for homesites, industry and agriculture, the balance of 20,000 acres being taken up by undergrowth, trees and marsh—useless wasteland.

Several civic-minded gentlemen viewed this spectacle with mingled awe and horror, and thought up ways and means of utilizing this land, which if drained and cleared would be ideal for farming, fertile, virgin soil. Thus, in the year 1913, Sub-Drainage District No. 1 of the Fourth Jefferson Drainage District was created, comprising about 2400 of those 20,000 idle acres. This District was located in the rear of the town of Kenner, at that time known as a large vegetable center, shipping as many as twenty cars of mixed vegetables daily to the eastern and northern markets.

With the creation of this sub-drainage district, five per cent bonds in the amount of \$112,000.00 were issued and sold, to be paid over a period of forty years from a forced acreage tax of \$2.60. This district operated successfully for about five years, putting into cultivation about 1000 additional acres, but defaulted during 1918. In 1924, when the Fourth Jefferson Drainage District was reorganized, the bonds of Sub-Drainage District No. 1 were revived and reduced to \$97,000.00, when they again defaulted, during 1932. On September 1st, 1937, they were again refunded and refinanced, the outstanding principal reduced to \$33,950.00 with two per cent interest coupons attached, to be paid over a forty-year period, from 1940 through 1977. This refinancing and refunding has saved the taxpayers 65 per cent in principal and 3 per cent in interest, and this sub-district is today functioning perfectly.

In 1915, the same civic-minded gentlemen, not satisfied with the thought of reclaiming 2400 acres out of 20,000, branched out further, and created Sub-Drainage District No. 2, a gravity drained district comprising 2000 acres in the Southport area. This district, once useless land, now boasts industrial factories and residences of beauty. Issuing \$40,000.00 bonds with five per cent interest coupons attached, this district has operated with success continually, and there remains an outstanding amount of \$10,200.00 bonds, which will be paid off by 1944. Every acre in this district is now utilized. The new Airline



Highway between New Orleans and Baton Rouge, composed of two forty-foot concrete roadways separated by a fifteen-foot neutral ground, will cross this district, still further enhancing the value of the land embraced in its area.

Further reclaiming of land continued in 1915, when Sub-Drainage District No. 4 was created, embracing all of that land north of the Metairie Road from the Orleans Parish line to the upper line of Bonnabel Place, an additional 1800 acres, of which about half has been used for homesites and farming. This district issued \$60,000.00 bonds with five per cent interest coupons, defaulting during 1919, again revived when the Fourth Jefferson Drainage District was reorganized in 1924, at which time payments on bonds and interest were resumed, there being an outstanding \$30,700.00 bonds with five per cent interest coupons, and the district being in perfect operating condition, with a balance in its Sinking Fund for use in redeeming bonds and interest coupons.

The year 1924 saw a general reorganization of the Fourth Jefferson Drainage District, which was reorganized under Act 85 of the Legislature of 1921, at which time Sub-Drainage District No. 3 was created, thereby reclaiming the entire 28,000 acres on the east bank of Jefferson Parish. In the creation of Sub-Drainage District No. 3, the 2400 acres in Sub-Drainage District No. 1 and the 1800 acres in Sub-Drainage District No. 4 were included in Sub-Drainage District No. 3, which district issued bonds in the amount of \$2,500,000.00, at six per cent interest, payable over a period of forty years.

With this money, the Lakeshore levee was constructed as a protection against the waters of Lake Pontchartrain. It is upon this levee that the Lakeshore Highway is now constructed, which highway is included in the Louisiana Highway Commission's program of paving and revetting as a protection against the lake waters.

Four pumping plants were constructed on this lakeshore levee, about two miles apart, the first placed in the rear of Metairie and the last in the rear of Kenner. These plants are equipped with two Worthington Diesel engines, each connected with a lift pump. Each plant has a capacity of 125,000 gallons of water per minute. The plants are constructed of concrete and steel, with tile roofs, in order to insure permanency. Each plant has a six-room residence in connection, so that the engineer of the plant may reside on the grounds, in order that someone may be in attendance at all hours. The construction of these four pumping plants made possible the elimination of the obsolete, old plants of Sub-Districts Nos. 1 and 4, constructed in the years 1913 and 1915 respectively.

In 1924, sixty miles of large drainage canals were constructed, in a criss-cross pattern, in order that each of the four plants would be in a position to draw its share of the rainfall, and causing all of the sur-



plus water to drain quickly from the front section of the district into these sixty miles of catch basins.

After the completion of this drainage project, quite a large area of the land being drained was sold in small acreage by real estate dealers, thereby creating numerous owners over the entire district, which was very promising; but after the land slump, several thousand acres of land reverted to the State of Louisiana for non-payment of taxes. The acreage reverted figured in the amount of approximately 19,000 acres, leaving only 9,000 acres from which taxes could be derived, as the acreage in the hands of the state paid no taxes whatsoever. Naturally, this crippled the drainage district financially, for while the obligations of the district continued, the funds with which to meet them dwindled to almost nothing.

It was therefore necessary during the beginning years of the reorganized district to levy the following taxes:

Sub-Drainage District No. 1.....	\$10.50 per acre.
Sub-Drainage District No. 2.....	.50 per acre plus 2 mill ad- valorem.
Sub-Drainage District No. 3.....	8.00 per acre—C zone. ----- 10.00 per acre—B zone. ----- 12.00 per acre—A zone.
Sub-Drainage District No. 4.....	10.50 per acre.

Due to these taxation rates and the amount of acreage reverted to the state, the bonds of Sub-Drainage Districts No. 1 and No. 3 defaulted. The Board of Commissioners of the Fourth Jefferson Drainage District then decided that the only solution was for the bondholders of Sub-Drainage Districts Nos. 1 and 3 to get together and scale down the principal and interest of those bonds.

After due deliberation and conference, the Bondholders Protective Committee of Sub-Drainage District No. 3 was created, and this committee agreed with the Board of Commissioners to the following revisions of bonds, which was handled through United States District Court of New Orleans under provisions 78, 79 and 80 of the Bankruptcy Act of the United States as added by Act of Congress, May 24th, 1934 (U. S. C. A. Title 11 Chapter 9 Sections 301-302-303):

“For the \$2,394,000.00 bonds at 6 per cent interest outstanding, that \$718,200.00 bonds in the amount of \$300.00 each be issued with 2 per cent interest coupons attached, and \$2,010,960.00 bonds of \$800.00 each be issued, being non-interest bearing, and to be paid over a period of forty years.

“It being agreed that the tax lien of \$6,099,720.00 on all acreage in the Drainage District be scaled down to \$3,200,000.00, a saving of 52 per cent to all property owners in the district.

“It being further agreed that an average acreage tax of \$2.85 be levied in lieu of an average tax of \$7.00 per acre as



heretofore levied, thereby creating a saving to the property owners.

"It being further agreed that at no time is the Board of Commissioners to levy more than \$80,000.00 per year on the entire acreage in Sub-Drainage District No. 3 for the payment of bonds and interest, and further, that out of the first \$30,000 collected each year for these bonds and interest, the 2 per cent interest will be paid, and the difference of the interest and the amount of \$30,000.00 be used to call over interest bearing bonds in their order. Any amount collected over the \$30,000.00 will be pro-rated equally over the non-interest bonds. In the event the amount of \$30,000.00 is not collected each year, then the difference between the amount collected and the \$30,000.00 will be allowed in the following year."

For the years of 1936 and 1937, the two years that this plan has been in operation, the following collections have been made: 1936—\$24,824.72, of which \$14,364.00 interest was paid and \$7500.00 bonds called; 1937—\$23,940.00, of which \$14,214.00 interest was paid and \$8400.00 bonds called. As you will note from the two years' collections we have an override of about \$11,000.00 before paying non-interest bearing bonds, and this set-up runs for forty years only.

Due to the refunding and refinancing plan put into effect on September 1st, 1937, the acreage tax rate for Sub-Drainage District No. 1 was reduced from \$2.50 per acre to \$1.25, thereby creating a saving to the property owner.

At the present time the total bonded indebtedness of the Fourth Jefferson Drainage District is as follows:

Sub-Drainage District No. 1.....	\$33,950.00 with 2% interest.
Sub-Drainage District No. 2.....	10,200.00 with 5% interest.
Sub-Drainage District No. 3.....	702,300.00 with 2% interest.
Sub-Drainage District No. 3.....	2,010,960.00 with no interest
Sub-Drainage District No. 4.....	30,700.00 with 5% interest.

all of which are in current condition.

In order to maintain their four pumping plants and clean ditches and canals, the drainage district is forced to secure funds from an acreage tax, known as a "maintenance tax". During the inception of the drainage district, in 1924, this tax was levied at \$2.00 per acre, giving the district \$56,000.00 to maintain drainage, which was an adequate amount. Since such a large block of acreage has reverted to the State it has become necessary to increase this maintenance tax to \$3.00 per acre, which at this time yields only about \$33,000.00 annually as against the \$48,000.00 collected at the beginning of the district.

We have been successful in securing a project with the Works



Progress Administration in the amount of \$31,000.00, to clean and dig all large drainage ditches. This project covers all large drains over the entire district, and has now been under operation for the past three months and is progressing very nicely.

Due to erosion of the soil on the discharge side of Pumping Plant No. 1, a leak has sprung beneath the foundation. For this reason, we have also prepared and ready for submission to the Works Progress Administration a project for the construction of concrete aprons on the intake and discharge sides of the plant foundation. When completed, this project will leave the foundation in perfect condition. Also included in this project, which should be under way very shortly, is the cleaning of all large drainage canals in the district.

In closing, the Fourth Jefferson Drainage District has been successful in coming through some bad periods. At present, we are using every means possible to place its operating system in first class condition, and we feel confident that this will soon be accomplished.

### **New Orleans Stamp & Stencil Co., Inc.**

GUS. W. SEIFFERT, President and Manager  
Rubber Stamps, Stencils, Marking Devices of All Kinds  
330 CAMP ST. RAYMOND 2960 NEW ORLEANS  
Ask For Descriptive Catalog

## **THE FRIEBERG MAHOGANY CO.**

MANUFACTURERS AND IMPORTERS

OF

**MAHOGANY LUMBER AND VENEERS**

JEFFERSON PARISH

## **Bisso Ferry Company, Inc.**

Operating

JACKSON, LOUISIANA, WALNUT, LULING,  
DONALDSONVILLE

"Pioneers of River Progress"



## City of Gretna

EDWARD J. STREHLE

*Mayor*

The City of Gretna, incorporated under Act 136 of 1898, has a population of 12,000 and is the parish seat of Jefferson. Situated on the left descending bank of the Mississippi River, it is connected with New Orleans by two ferries, operating on a twelve-minute schedule.

Gretna's transportation facilities are excellent. It is well served by rail, forming the terminal of the Texas and Pacific and Missouri Pacific Lines, and traversed by the Southern Pacific and the New Orleans and Lower Coast. It is connected with all parts of the state and nation by concrete highways; the Intracoastal Canal is only one mile away, and the city possesses an extensive river frontage.

Gretna is justly proud of its public works. It boasts a modern water filtration plant and sewerage system and a municipal garbage incinerator. A new \$50,000.00 Post Office has just been completed.



Seated, left to right: Frank Bessler, Alderman; John T. Gegenheimer, Alderman; Edward J. Strehle, Mayor; Henry F. Bender, Alderman, and Beauregard Miller, Chief of Police.

Standing, left to right: Wm. E. Strehle, Tax Collector and Superintendent of Waterworks; Jack J. H. Kessels, Architect; N. B. Knight, Treasurer; Heinke Trapp, Plumbing Inspector; Julius F. Hotard, Clerk, and Dr. Floyd Hindelang, President of the Board of Health.

Insets, left to right: Eugene Gehring, Alderman, and Andrew H. Thalheim, Attorney.



There is at present under consideration a proposal for the construction of the Hero-Hackett Bridge across the Mississippi River from Race Street in New Orleans to the City of Gretna. If plans for this bridge mature, there will be erected a \$9,000,000.00 bi-helical bridge, unique in this country.

Twenty-four hour police and fire protection is furnished. The fire losses during 1937 were very small, comparing favorably with the lowest in the country. The city is well drained, and the streets kept in good condition.

Churches of all denominations are located in the city. There are many schools, both public and parochial. One of the largest and finest high schools in the state is located in Gretna.

Gretna operates under the aldermanic form, governed by a mayor and a board of aldermen. It is the policy of the city officials to co-operate in every way possible with manufacturing and business interests. The people of Gretna make the stranger welcome and at home; and we believe that this neighborly spirit makes Gretna an excellent place to locate either an industry or a home.

LAKE FOOD AT ITS BEST  
**ORIGINAL BRUNING'S RESTAURANT**

ON LAKE PONTCHARTRAIN

East End  
Jefferson Parish

West End Park  
New Orleans

**The Truckers Ice & Cold Storage Co., Ltd.**

*DAY AND NIGHT SERVICE*

KENNER

Telephone Kenner 175

**"SERVICE DIRECT TO YOUR HOME"**

**TRICO**  
**COFFEE COMPANY**



# The Metairie Golf Club

NELSON M. WHITNEY

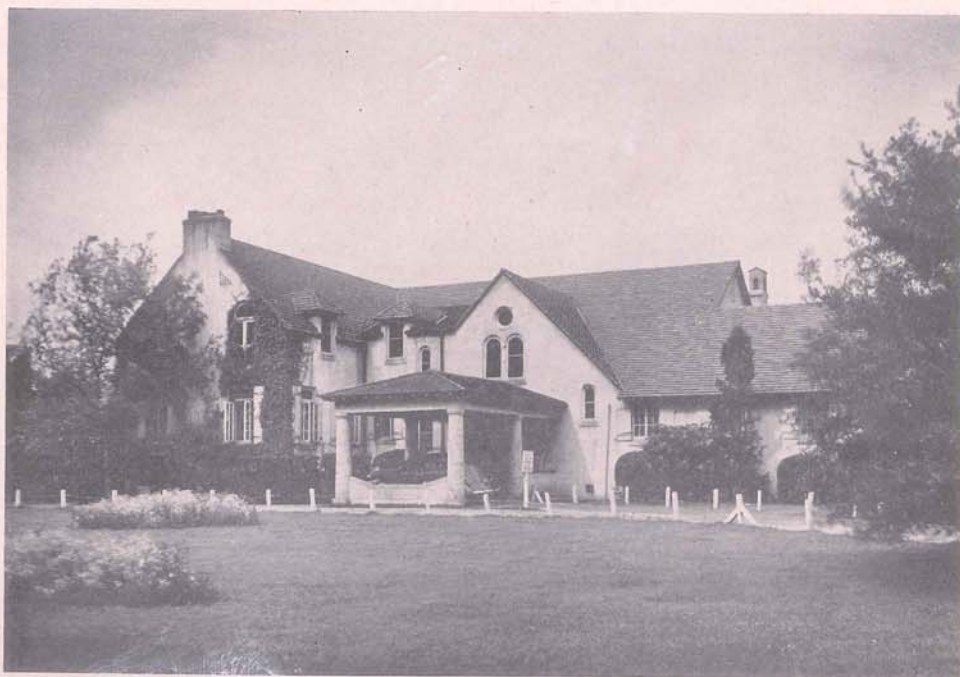
*Banker and Sportsman*

The picture at the Metairie Golf Club has changed materially during the past year. The membership has increased to such an extent that adequate funds are now readily available for all budgets to maintain the course and the club house in first class condition.

Construction work is still going along at full speed and special work is now being done on the fairways of the last nine. The construction work that was started a year ago on the first nine is now practically completed. It is not only a vast improvement, but it is exceedingly pleasing to the eye. The large rolling traps surrounding the greens are so well blended with the surrounding scenery that they do not look artificial at all, and, indeed, make a beautiful picture.

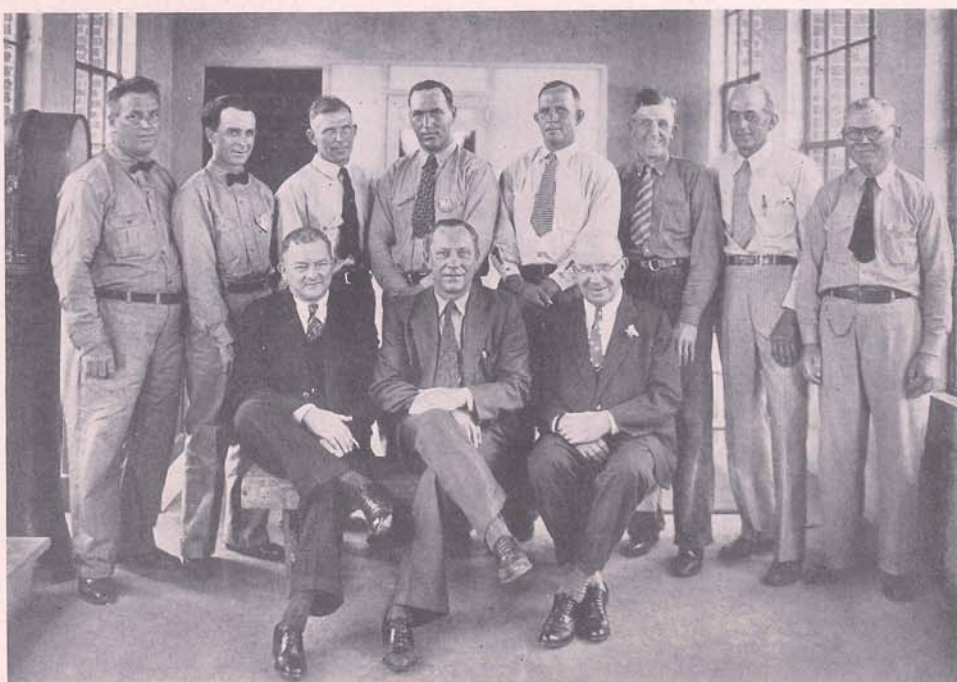
The first nine is what one might call "open," allowing the players to keep moving and eliminating congestion as much as possible; also giving one a chance to hit the ball, as the fairways on the first nine are large and there is little surrounding woodland. This is a splendid idea, as it has been pretty

(Continued on Page 198)



Metairie Golf Club House





The Jefferson Waterworks District No. 2's employees and President of the Board, Hon. Ed. E. Feitel, seated at right.

## Jefferson Parish Waterworks District No. 2

ED. E. FEITEL

*President*

Located in the Fourth Ward of the Parish of Jefferson, in the Village of Marrero, is the Jefferson Parish Waterworks District No. 2, which serves that area between the city limits of Gretna and Westwego. This area enjoys the privileges of a city without incorporation. We have pure water, electricity, gas, paved highways and black topped streets. It is also the greatest manufacturing center in Jefferson Parish, furnishing employment to approximately 5000 people.

Besides furnishing water to residents and industries located in the vicinity, this waterworks also supplies the oil field at Lafitte. Barges are towed to our pipe line at Harvey, on the banks of the Intra-coastal Canal, where they are loaded with water, and from there towed to the oil fields.

The personnel of the Board of Commissioners is: Ed. E. Feitel, President; Louis C. Fos, Vice-President; Joseph L. Sartis; Charles E. Boyd; Jacob Hecker, Sr.; A. J. Grefer, Secretary-Treasurer and Ernest M. Conzelmann, Legal Adviser. All are business men of the parish, who conduct the affairs of the district in the most economical manner, thereby keeping the cost of production down and making our selling price for water one of the lowest in the United States.



## Town of Westwego

VIC. A. PITRE

*Mayor*

The town of Westwego, located on the west bank of the Mississippi River, was incorporated as a village during the administration of Governor Pleasant, with a population of 1583, according to the census of 1918. From a village, Westwego has grown to a city of almost 5000 inhabitants.

Westwego is governed by a mayor and a board of aldermen. Various other bodies, as the Westwego Fire Company, Board of Health and others, are all very active, co-operating to the fullest extent with the town officials for the protection and well being of the people.

Its water plant is modern. Westwego ranks as a first-class city in fire risk, our basic rate being forty cents per hundred dollars.

Practically every street is paved, and sub-surface drainage and curbing have been installed on the main thoroughfares throughout the town. Some 23,000 feet of pavement have just been completed through the outlying sections through the co-operation of the United States Government, and just a short time ago the town received a grant through the U. S. Government in the amount of \$40,000.00, in order to improve the drainage system of the community. A survey is now

(Continued on Page 204)



Reading from left to right, Standing: Henry Verheugen, Secretary; L. J. Bernard, Alderman; W. H. White, Town Marshal; Eddie Bye, Alderman, and Vincent St. Blanc, Treasurer.

Seated: L. Guidry, Alderman; Vic. A. Pitre, Mayor; E. M. Gordon, Alderman, and J. Gasenberger, Alderman.



## Louisiana 'Lasses

JAMES R. GREER

*Superintendent, Penick & Ford, Ltd.*

Louisiana is the source of many table delicacies, one of the most famous of which is molasses. Nowhere else in this country except in certain "sugar houses" along the Mississippi River and its tributary bayous in Louisiana, has the art of producing this table delicacy been so zealously guarded, passed from generation to generation.

It is not surprising, therefore, that the world's largest cannery of pure molasses and syrup of cane juice is located in Jefferson Parish. Back in 1898, the firm of Penick & Ford, then a partnership, was founded. These men knew that molasses could be packed in cans to make it possible for the housewife throughout the length and breadth of our land to secure a uniform grade of molasses in a sanitary package for use whenever wanted on her table or in her kitchen.

From a small beginning, the sale of canned molasses grew rapidly. Today, the molasses barrel is rarely seen in food stores. Mrs. Consumer knows that she will find all of the goodness and "real old plantation flavor" in the canned molasses on the grocer's shelf.

Each year during Louisiana's "grinding season", when the sugar cane is harvested, Penick & Ford have their agents select the finest high grade molasses produced in the Sugar Bowl. Incidentally, they are by far the largest buyers of Louisiana's high grade molasses, during the past season handling over one-third of the entire output. The molasses skillfully produced at the sugar house is brought to



The largest cane syrup canning plant in the world—that of Penick and Ford, the home of "Brer Rabbit" syrup and molasses.



Marrero in tank cars. Each tank lot is analyzed, tested by experts on flavor and color, and submitted to rigid baking tests. Lots which come up to standard are immediately placed in cold storage; for molasses is produced only during the grinding season, which generally lasts from the first cool days in October to the Christmas holidays.

During each season, the various lots are skillfully blended for canning during the year so that everyone, from Maine to California, may enjoy its deliciousness any day of the year, just as well as the plantation owner can in the midst of his producing season.

All of the molasses packed by Penick & Ford is purchased from Louisiana plantations, and packed by grades to suit the consumer's needs. The highest quality is light in color and is used for fancy cooking and table use. The other grades are darker in color and stronger in flavor, and used chiefly for cooking purposes.

Penick & Ford's products are distributed in every state in the Union. For many years this company has spent large sums in advertising to constantly remind the American housewife of the many delicious ways of serving molasses, with waffles and pancakes, and in cakes and candies. Today, you can get out the old family cook book and enjoy again those tempting dishes. Down in Louisiana they are still making molasses as luscious and full-flavored as the best that ever came from the old-time kettles. Packed under ideal conditions, this molasses has even greater purity and evenness of flavor than was possible in the "old days".



## **The Metairie Golf Club**

(Continued from Page 194)

well agreed by championship courses that to have the first few holes as open as possible will keep the players moving right along. The picture on the second nine changes greatly, tending to keep the course from becoming monotonous. One can play the Metairie week in and week out and always have the urge to give it another try. The last nine is out through the woods and these extremely large greens bring it right up to the standard of a championship course.

The professional duties at the club have been taken over by Mr. John Camet. The committee is to be congratulated upon having secured his services.

The activities of the club during the past year have tended to draw the members of the club continuously. The schedule of entertainments has been a success and the new improvements to the club house have added to the attractiveness of Metairie. The membership is still growing and Metairie in the very near future will not only be a good golf course, but one that the parish can be proud to offer as a championship course.



# East Jefferson Waterworks District No. 1

---

A. J. WEGMANN

*Treasurer and General Manager*

Located on the east bank of the Mississippi river, in the Seventh Ward of Jefferson Parish, the East Jefferson Waterworks District No. 1 serves the Seventh, Eighth and Ninth Wards of the parish.

Though an infant industry in the parish, the waterworks has attained an enviable position. It is entirely self-supporting and financially able to adequately serve its large area. Organized in 1929, to fill the need of a thickly populated section not served with pure, filtered water for domestic and industrial uses, it has grown and branched out to reach and serve all consumers. In 1935 it acquired the system of the Jefferson Water Company, Inc., a private corporation. At that time serving eight hundred customers, it now serves twenty-six hundred. No service is too large or too small for it to handle.

In addition to providing pure, safe water, it offers protection against fire to all buildings and industrial plants throughout the area served, without charge. For this very important service it receives no compensation from any source. A constant pressure of sixty pounds is maintained twenty-four hours a day. In addition to normal service pumps, it is equipped with two large fire pumps, capable of serving 6000 gallons of water per minute, each with a pressure of 125 pounds. We also maintain and hold in readiness a Diesel engine with a rated capacity of 6000 gallons per minute, for any emergency which might arise. This unit is operated independently and uses fuel oil for its operations. It can be turned into the service mains within sixty seconds, and develops an immediate pressure of eighty pounds.

Beginning at the plant outlet with a twenty-inch service main, the water system branches out in every direction for a total of 110 miles. The smallest service main in the system is six inches. Fire hydrants are spaced in proportion to congested development and improved property. More than 600 of these hydrants are always ready to function immediately when called into service. Most of these hydrants are of the steamer type, having a 4-inch pumper nozzle and two 2½-inch hose nozzles. All of the remainder have two 2½-inch hose nozzles. The entire system is correctly and proportionately valved for shut-downs in case of emergency or repair. Many feeds are arranged so as to reduce to a minimum the area so affected. Any break or interruption in service is immediately repaired, during any part of the day or night. Unnecessary delays are not tolerated. An efficient maintenance crew is always ready to cope with any situation which may



arise. All employees are carefully trained in their respective duties. Each man has his particular task to perform, and he knows how and when to do it. Courtesy and efficiency is our standard and must be constantly maintained. Our maximum capacity is three times the present demand. We are built for the future and welcome expansion.

We are presently engaged in an expansion program of great importance. When completed our plant and system will be thorough and distinctly modern. The sum total of the expenditure in this instance amounts to \$313,000.00. An entire new pump house and intake line has been built, and the intake line extended into the river for a distance of 120 feet from the old location. New pumps and motors have been installed, the most modern equipment of its kind. An inexhaustible water supply is thereby assured. We are now erecting a 500,000-gallon modern steel tank in the rear of our plant. The completion of this handsome structure will insure maximum pressure at all times and reduce operation costs during the peak hours. We are also extending our pipe line system by some twelve miles of additional mains. All isolated sections are now being tied in and looped. When these additional mains are completed, the system will be one continuous loop of circulating pure water, available for all uses. Fifty additional hydrants are being placed on new as well as old lines. When completed, all improved sections of the district will have ample and adequate fire protection. Through this medium we expect to extend our services to more than three hundred additional customers. A new administration building, garage, storeroom and work shop will be erected on our property at the corner of Arnoult Road. This building will be modern and in keeping with the present architecture. In addition, all buildings will be cleaned and refinished. All equipment will be thoroughly gone over, cleaned, and repaired where necessary. When this work has been completed, the plant and system will represent the finest and most complete waterworks in the south.

We invite anyone interested to visit our plant. Visitors are always welcome.

The members of the Board of Commissioners are: John W. Hodgson, Bruno Prager, Chas. A. Boutall, Paul D'Gerolamo and Eugene J. Bender.

The officers are: John W. Hodgson, President; Bruno Prager, Vice-President; Chas. A. Boutall, Chairman Finance Committee; F. V. Draube, Secretary, and A. J. Wegmann, Treasurer and General Manager.



## Lafourche Basin Levee District

T. M. McCARROLL

*Assistant State Engineer*

Composed of those parts of the Parishes of Ascension, St. James, St. John, St. Charles, Jefferson and Plaquemines lying on the right or west bank of the Mississippi River from Donaldsonville to the lower line of Riceland Plantation, and of the Parishes of Ascension, Assumption and Lafourche lying on the left bank of Bayou Lafourche from Donaldsonville to Chere Ami Canal, the Lafourche Basin Levee District contains some 1,044,000 acres of the richest alluvial soil in Louisiana.

This District is fortunate in being so situated geographically and topographically as to be virtually independent of flood conditions in other levee districts within the state; and, as long as the Mississippi River levee line along its own front is held intact, any chance breaches elsewhere could have no adverse effect. Its head is at Donaldsonville, where Bayou Lafourche departs from the Mississippi River and gradually widens the space between the Mississippi and itself in such a way as to gain the advantage of having natural relatively high land borders on the northern, eastern and western segments of its perimeter.

Until a dam was constructed across the head of Bayou Lafourche, in 1904, flood water from the Mississippi found its way down the Bayou, and it was necessary for the District to maintain a levee system along the latter's bank. However, when the dam was constructed at Donaldsonville, this rear or interior levee line was abandoned and drainage canals were cut, in places, through the levee and the bayou bank, thus introducing gaps in the District's otherwise natural northern and western barrier; which gaps can be closed, however, in case of need. Any flood water escaping from the Mississippi above Donaldsonville will therefore be deflected toward the Gulf of Mexico and away from the District.

The adopted plan of flood control for the Mississippi River provides what is universally regarded as an adequate and reliable system of levees, supplemented by such diversion units as are deemed necessary to jointly furnish protection against a superflood 20 per cent greater in volume than the greatest flood of all time, namely, that of 1927.

The levee system is most carefully built in conformity with the best and most scientific practice. The foundation is explored by means of "muck" or key ditches, and any foreign matter found therein is thoroughly removed. Furthermore, the soil within the limits of the base of the levee is scarified to insure a perfect bond between the new and the old earth and the embankment is brought up to required grade



and section in such way as to avoid the possibility of sloughs or slides. The earth fill is necessarily obtained from adjacent borrow pits where it is practical to reject all foreign matter, but not always possible to select soil of any specially favorable character. To compensate for this lack of opportunity for selectivity, the following formula for net cross sections was adopted and embodied in the Flood Control Act of 1928, which formula governs the construction of all levees:

Section	Crown Feet	Riverside Slope	Landside Slope to Contain Seepage Line of	Governing Material
A	10	1 on 3	1 on 6	75% or more buckshot
B	10	1 on 3½	1 on 6½	Loam
C	12	1 on 5	1 on 8	75% or more of sand

A net grade was prescribed, having not less than one foot above the predetermined maximum possible flood, contemplating the proposed floodways and spillways to be in operation.

Special inspectors are placed by the United States Corps of Engineers on each levee project during its construction. The Levee District Inspector also makes regular inspections, and both the United States Engineer and the State Engineer in Charge supervise construction to insure faithful compliance with the plans and specifications.

Along the commercial front of the District, opposite the city of New Orleans, where the foreshore is narrow and the levee is subjected to wave action, the levee is protected with substantial creosoted wooden bulkheads; and from New Orleans downstream to the lower limits of the District and well on beyond, the levee line is also protected against wave action due to storms and frequent passing of ocean going steamships, since the foreshore is likewise narrow and the river bank comparatively low. Some of this frontage is protected with untreated timber bulkhead; but, for the past four years, a better and more durable type of levee revetment has been constructed that consists of a layer of sand asphalt mixture two inches thick, laid directly on the surface of the riverside slope of the embankment, that in addition to serving as a protection against the damages of wave action also serves to make the levee watertight.

Along the Mississippi, the District's total length of levee line, upon which it depends for protection against overflow, is 133.5 miles, of which 81.7 miles is between Donaldsonville and New Orleans, 13.8 miles is within the city limits of New Orleans, and 38.0 miles is between New Orleans and the lower limits of the Lafourche Basin Levee District. Further, the levee on the right bank of the Mississippi continues downstream to "the Jump" which is far below the lower limits of the District, thus insuring complete safety for all the area within the District.



## Town of Kenner

VIC D'GEROLAMO

*Mayor*

Kenner, situated only ten miles from New Orleans, on the east bank of the Mississippi, is the oldest town in Jefferson Parish. Its historical background dates back before the Civil War. On a map dated May, 1858, there is shown Coleman's Mill, where cannon and cannon balls were manufactured during the Civil War. This foundry was located just off the present Williams Street, but has since been taken into the river, no traces remaining.

Before the Civil War, and long after, the cultivation of sugar cane was the most important industry of this section. Conditions after the war forced the sugar planters to divide their huge plantations into smaller tracts in order to save them from complete ruin and abandonment. Two of the largest plantations were owned by the Kenner brothers, and it was through the division of their plantations into lots to be sold to settlers coming in that the town became known as "Kenner." Previous to that time, this section was known as "Cannes Brules" or "Burnt Cane."

The first settlers were of Irish and German descent, but after the Cotton Exposition in New Orleans, many Italian families settled



Reading from left to right, Standing: Joseph Viola, Alderman; Pierre Larroux, Alderman; Frank Peronne, Alderman; Martin Clancy, Alderman; V. J. Carona, Marshal, and John Maggiore, Alderman.

Seated: Miss Philomene Paasch, Secty.-Treas.; V. D'Gerolamo, Mayor, and Miss Marie Neidhardt, Tax Collector.



here. It was during this period that truck farming came into prominence. The growing and shipping of vegetables is still one of the chief industries. Served by three railroads and two highways, Kenner is able to ship vegetables north, east and west, and reach northern consumers with truck produce in early spring and late fall, when their own markets are not producing.

Since many of the early settlers were Italian immigrants, the Italian feast of St. Rosalie is one of the major events of the year, usually celebrated on the first Sunday in September. On that day, several hundred members of St. Rosalie's Society march through the streets in a religious procession nearly two miles long, with banners and music, carrying the statue of their patron, St. Rosalie. The day usually ends at the church and is climaxed by the lighting of a large fireworks display picturing St. Rosalie.

Kenner's incorporation as a town dates back to 1855. Due to political trouble in later years, its charter was taken away. However, on December 26, 1913, a proclamation was issued by the late Governor Luther E. Hall, granting the charter's return, and Kenner once more functioned as a town. Kenner has always been a most progressive town and we feel certain that its future is assured.

—o—

### **Town of Westwego**

(Continued from Page 196)

under way, anticipating further co-operation from the Federal government for the installation of a sewerage system throughout the town.

Our ferry service and the use of the Huey P. Long Bridge across the Mississippi puts us within twenty minutes of Canal Street department stores. We enjoy all the conveniences of the city, plus the conveniences of the country.

We invite merchants, homeseekers and corporations to locate within our community, and promise to co-operate with them and aid them in every possible way.



MR. HEARD



# Colonial Country Club

ARTHUR G. HILL

*General Business Manager*

Few rural parishes or counties anywhere, so dedicated to industry as is Jefferson Parish, can boast of the recreational facilities available to residents and visitors.

Among these many facilities is the Colonial Country Club, located in the heart of the most populous district of the parish and easily approached by good roads from all directions. This club, its rolling fairways and tufted greens nestling behind the protective levee of the Mississippi River's east bank in the village of Harahan, combines all the advantages of a rustic setting with those of a modern, "big city" club, where sportsmen gather for one purpose, recreation.



Colonial is unique in that it is a "playing club," where the members' interest above all else is golf; one that has developed several outstanding players. The links was laid out and opened to the playing public in 1925 at a cost of \$40,000.00, the course having been designed by Seifried and Tweger, Chicago landscape architects, under the direction of Harry Schobell, then club professional. A group of far-sighted and golf-conscious New Orleans businessmen had chosen the site for its quiet and lovely setting and for its easy accessibility from New Orleans and the Jefferson communities. They purchased two hundred acres of the old Tchoupitoulas plantation, ancestral home of the Chevalier Joseph Soniat Dufossat, and began the work of remodeling the ante bellum mansion to fit the needs of a golf club, adding a wing at each end of the colonnaded veranda and installing locker rooms, lounges and a grill.

Fred Haas, a leading amateur and fine golfer, came to the Colonial greens as professional in 1934. Since 1936, the club membership has jumped from 96 to 380, one of the largest in the New Orleans area.

The name of Haas brought the Jefferson parish club its first fame in 1934 when Fred, Jr., then eighteen years old, became Southern Golf champion. Subsequently, the names of young Haas and Colonial have been linked in papers all over the country. This year still greater attention was focused on the remodeled plantation house at Harahan when Freddie was named a member of the American Walker Cup team.

Haas, Sr., has repeatedly striven to develop new talent, and at the moment has under his wing two youngsters still in their teens,

(Continued on Page 208)



## Village of Harahan

FRANK H. MAYO

*Mayor*

Ten miles above New Orleans, on the east bank of the Mississippi River, lies the village of Harahan.

Incorporated in 1920, Harahan has grown steadily, and now offers all the conveniences of both city and country. There are available railroad and trucking facilities and frontage on the river for manufacturers and residential subdivisions for builders.

It is no longer necessary for people to remain in the crowded city, where they are forced to live in apartments or houses so close together that there is little or no room for a garden, and where the children must play in the streets or not at all. Harahan offers spacious suburban homes, where the cost of living is appreciably less than in the city, and where life itself is much more pleasant.

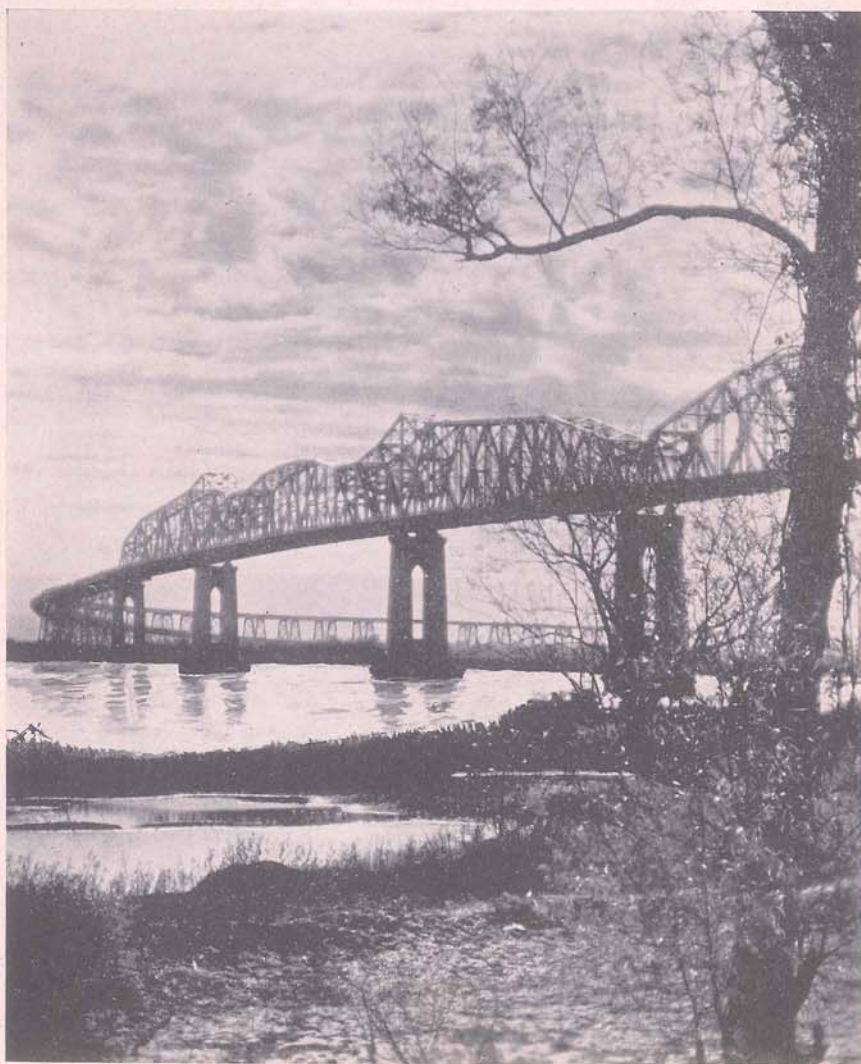
Harahan's nearness to New Orleans is an added inducement to build here. Residents of Harahan can reach the business district of New Orleans as quickly as those people living in the outlying sections of that city.

(Continued on Page 208)



Reading from left to right: Joseph Crochet, Alderman; John Contrado, Marshal and Chief of Volunteer Fire Department; Frank H. Mayo, Mayor; Ernest Barron, Alderman, and Philip Boudreaux, Alderman.





The Huey P. Long Bridge across the Mississippi River. Both approaches of this bridge are located in Jefferson Parish.

## Avondale

P. J. KROLL

*General Manager, Southport Petroleum Company (Avondale Terminal)*

One of Jefferson's newest industrial districts is the vicinity of Avondale and Waggaman. Long known to sportsmen for its unexcelled hunting and fishing, this section attained new prominence when the Huey P. Long Bridge was located there, bringing greatly increased traffic through this region.

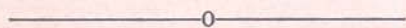
The location of the Southport Petroleum Company at Avondale has been another important factor in its development. The progress



made by this company is indicative of the industrial possibilities of the parish. In the two years since operations were begun, a distribution of over 2,000,000 gallons of motor oil and kindred products per month has been developed, and its staff of employees has grown from three to forty men.

The Southport Transit Company, a subsidiary of the Southport Petroleum Company, owns its own water transportation, barges and tugs used in the transportation of its products from the Texas refineries to Avondale, where the material is stored in million-gallon tanks and reshipped to the entire southeast territory.

Recently the Southport Petroleum Company has leased a portion of its property at Avondale to the Marine Welding, Scaling and Sales Company for use as a shipyard in the building and repairing of barges and tugs. It is expected that this venture will in time add still more to this progressive parish.

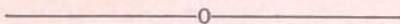


### **Colonial Country Club**

(Continued from Page 205)

Gene Fogarty and Norwood Hingle, Jr., both frequent par-breakers, who give evidence of going places in golfdom.

But Colonial activities are not confined to the fairways alone. The strains of popular music now are heard from the old ballroom with even greater regularity than were the waltzes of old Dufossat's slave orchestras, and carefree social groups are always to be found gathered about the tables of the grill, taking advantage of the rare recreational facilities offered.



### **Village of Harahan**

(Continued from Page 206)

On the outskirts of Harahan is the Colonial Country Club, upon whose links many tournaments are played. Game and fish in the surrounding wooded areas offer recreation in hunting and fishing.

Harahan is located in the heart of fertile lands, suitable for truck farming, dairying, stock and poultry raising, and this section supplies New Orleans with a large amount of dairy and farm produce annually.

We feel that to live in Harahan is to enjoy a fuller, better life.



## Second Jefferson Drainage District

---

ERNEST M. CONZELMANN

*President*

The Second Jefferson Drainage District, organized in 1909, takes in the farming area comprising that part of Harvey on the west bank of the Harvey Canal and the lower part of Marrero, 3000 acres in all.

It is drained by two large outfall canals and a number of lateral canals. The drainage station is equipped with three Fairbanks engines using crude oil as fuel. At present another Diesel engine is being installed, a 225 horse-power Fairbanks-Morse with 54 inch Woods pump.

All of the main drainage canals are being enlarged with the help of the Works Progress Administration.

This district operates under an ad valorem tax, and is said to be the only drainage district in the state so operating.

While this district was originally a strictly farming area, today some of the largest manufacturing plants in the South are located here.

The members of the board are: Ernest M. Conzelmann, President; D. H. Roussel, Secretary and Engineer. The commissioners are: Louis C. Fos, Onezphar Bernard, Jacob Hecker, Sr., and Evans Folse.

---

## INFORMATION

of any kind regarding opportunities in Jefferson Parish may be obtained from the men whose names appear below. The establishment of industries is aided in every way by the Police Jury. To those interested in locating within its boundaries, Jefferson Parish offers every inducement. To industries it offers extremely low transportation costs, easy access to raw materials, an excellent point of distribution, and ten years' tax exemption. To farmers it offers rich, alluvial soil, mild climate and a close and ready market. To homeseekers it offers clean, pure air and sunshine, and the neighborly spirit not found in cities.

We invite all who are seeking a broader, better life and more and wider opportunities to make full use of Jefferson Parish's natural resources and spirit of friendly co-operation.

Weaver R. Toledano, President  
Police Jury  
Kenner, Louisiana  
Kenner 279

Justin F. Bordenave  
Kenner, Louisiana  
CEdar 1897  
Kenner 219

Wm. Hepting, Secretary  
Police Jury, Courthouse  
Gretna, Louisiana  
ALgiers 2116

---



# Table of Contents

Frontispiece .....	2
Foreword .....	3
Jefferson Parish Police Jury—Members and Officers.....	4
Jefferson—The Parish with a Future.....	5
W. R. TOLEDANO, President, Jefferson Parish Police Jury	
Officials .....	13
Buccaneers in the Bayous.....	15
CECIL B. DE MILLE	
Officials .....	35
Why We Are in Jefferson Parish.....	37
C. G. MUENCH, Vice-President, The Celotex Corporation	
Officials .....	51
Jefferson Parish—Always Original—Revolutionizes U. S. Seafood Industry When Two Women Dip "Seria" Bush in Bayou.....	53
MEIGS O. FROST, International Writer	
Jefferson Parish School Board Members and Officers.....	75
Lafitte Oil Field.....	77
(Part One) The Record Breaking Oil Pool in Jefferson Parish O. S. KNISELY, President of the Parish Petroleum Corp. and the Parish Drilling Corp.	
Lafitte Oil Field.....	85
(Part Two) Activities of The Texas Co. at Lafitte R. C. STEWARD, Manager Louisiana Division, Production Department, The Texas Company	
Kaleidoscopic Jefferson .....	87
AGATHINE H. GOLDSTEIN, Executive Department, State of Louisiana	
Officials .....	105
Shrimp—An Important Industry of Jefferson Parish.....	107
J. B. DAUENHAUER, JR., Director, Division of Fisheries, Louisiana Department of Conservation	
Progress in Education.....	133
LEM HIGGINS, B. A., Assistant Superintendent of Schools in Collaboration with Edward M. Comiskey, President of the School Board	
A Shorter Road to Grand Isle.....	151
ALFRED D. DANZIGER, Attorney	



## TABLE OF CONTENTS (Continued)

Agricultural Activities .....	163
G. T. GEIGER, JR., County Agent	
Youth in Jefferson.....	172
ANNIE LAURA HOWARD, Associate Editor	
Harvey Canal Turns Day Dreams of Progress Into Reality.....	180
C. O. HOOPER, Engineer and Builder	
Jefferson Homes and Gardens.....	183
HARRY PAPWORTH, Nurseryman and Florist	
Fourth Jefferson Drainage District—Sub-Drainage Districts 1-2-3-4.....	187
JUSTIN F. BORDENAVE, Secretary-Treasurer	
City of Gretna.....	192
EDWARD J. STREHLE, Mayor	
The Metairie Golf Club.....	194
NELSON M. WHITNEY, Banker and Sportsman	
Jefferson Parish Waterworks District No. 2.....	195
ED. E. FEITEL, President	
Town of Westwego.....	196
VIC A. PITRE, Mayor	
Louisiana 'Lasses .....	197
JAMES R. GREER, Superintendent, Penick & Ford, Ltd.	
East Jefferson Waterworks District No. 1.....	199
A. J. WEGMANN, Treasurer and General Manager	
Lafourche Basin Levee District.....	201
T. M. MCCARROLL, Assistant State Engineer	
Town of Kenner.....	203
VIC D'GEROLAMO, Mayor	
Colonial Country Club.....	205
ARTHUR G. HILL, General Business Manager	
Village of Harahan.....	206
FRANK H. MAYO, Mayor	
Avondale .....	207
P. J. KROLL, General Manager, Southport Petroleum Co. (Avondale Terminal)	
Second Jefferson Drainage District.....	209
ERNEST M. CONZELMANN, President	
Information .....	209
Index of Advertisers.....	212



# Index of Advertisers

• •

A	Page
A. & P. Food Stores.....	52
Abdo's Drug Store.....	166
Abele Brothers, Florists.....	130
Acme Marble & Granite Co.....	80
Alto Tourist Court.....	84
American Bakeries Co.....	152
American Beverage Co., Inc.....	96
American Brewing Co.....	78
American Coffee Co., Inc.....	92
American Creosote Works, Inc.....	60
American Distilling Co., Inc.....	86
American Heating & Plumbing Co., Inc. ....	96
American LaFrance & Foamite Pro- tection .....	132
American Printing Co., Ltd.....	216
Anti-Rust Paint Co.....	154
Auto Painting & Repairing Co., Inc.	94
Avegno, Vick .....	150
Avenue Feed Store, Inc.....	128

B	Page
Baldwin, A., & Co., Inc.....	108
Barataria Tavern .....	146
Bartlett Chemicals, Inc.....	154
Beekman's .....	98
Bell Distributing Co.....	102
Betz Service Station.....	128
Bienvenu, Emile .....	150
Bienville Meat Market.....	54
Billionaire Inn .....	140
Bishop-Edell Machine Works, Inc....	120
Bisso Ferry Co., Inc.....	191
Bleakley's .....	110
Bloodworth, Grasser & Dessauer, Inc. ....	156
Blue Horseshoe Tourist Court.....	112
Blue Plate Foods, Inc.....	140
Boland Machine & Manufacturing Co., Inc. ....	146
Borden-Aicklen Auto Supply Co., Inc. ....	106
Boulevard Garage & Beer Parlor.....	118
Boulevard Hardware Store.....	146
Bourne, Edward .....	152
Bowers Feed Store, Inc.....	168
Bradley & Courrage.....	58
Bridge Circle Club.....	166
Brillo Manufacturing Co., Inc.....	128
Bronson & Scranton, Inc.....	154
Brook Tarpaulin Co.....	124
Brooklyn Land Co.....	98
Brown's Restaurant and Cafe.....	140
Brunies Big Corner Restaurant.....	164
Butirich, Martin, Restaurant & Black Marble Cafe.....	166

C	Page
Cambias Office Equipment Co.....	152
Carey & Helwick.....	132
Carey, Dr. M. O.....	162
Celotex Corp., The.....	22
Central Finance Co.....	160
Chalmette Petroleum Corp.....	154
Chase Brass & Copper Co., Inc.....	124
Chickasaw Wood Products Co.....	118
City Ice Co., The.....	128
Clerc Lumber Co., Inc.....	118
Collins, J. C., Agent.....	116
Colonial Country Club.....	110
Comet Inn, Inc.....	168
Comiskey, James E., Co.....	134
Commercial Solvents Corp.....	130
Compton's Ice Service.....	142
Concrete Products Co.....	56
Consumers' Ice Delivery, Inc.....	142
Continental Can Co., Inc.....	146
Cooney Petroleum Co., Inc.....	12
Cottam, H. T., & Co., Inc.....	100
Coyle, W. G., & Co., Inc.....	154
Crane's Clothing Co.....	136
Crescent City Engraving Co.....	88
Crescent Typewriter Exchange, Inc.	132

D	Page
Dairymen's Progressive Ass'n.....	144
Dameron-Pierson Co., Ltd.....	134
Davison-Pick Fertilizers, Inc.....	104
DeSalvo, Frank, Grocery, Bar and Restaurant .....	114
Diboll, Boettner & Kessels.....	134
Dietzgen, Eugene, Co.....	156
Ditta, Carlo .....	142
Dixie Packing Co., Inc.....	160
Dixie Sales Co.....	98
Dixie Tourist Court.....	82
Dufour Bros., Mctle.....	148
Dunlap Sporting Goods Co., Inc.....	156
Durham's Feed Store & Hatchery..	150

E	Page
Eble, Charles, Florist.....	90
Eighth Ward Democratic Club of Jefferson Parish .....	144
Ellzey Stores .....	164

F	Page
Fairbanks, Morse & Co.....	110
Falcone, Jake, Grocery.....	164
Falstaff Brewing Corporation.....	80
Farnham Co. ....	60
Fauria Awning & Shade Co.....	150
Feitel, Ed. E., General Department Store .....	68



	Page		Page
Feitel, M., House Wrecking Co., Inc. ....	124	Hurwitz-Mintz Furniture Co. ....	158
Firestone Auto Supply & Service Stores .....	124	Hyatt, A. W., Stationery Mfg. Co., Ltd. ....	106
First National Bank of Jefferson Parish, The .....	140		I
Fisher, E. B., Agent .....	70	International Harvester Co., Inc. ....	102
Fisher's Store .....	120	International Lubricant Corp. ....	112
Fitzgerald's Lake House .....	170	Interstate Electric Co. ....	136
Fleming Canal Store .....	148		J
Foundation Finance Co., Inc. ....	152	Jackson Brewing Co. ....	92
Franz Bros. ....	168	Jackson Oil Co., Inc. ....	94
Freeport Sulphur Co. ....	48	Jahncke Service, Inc. ....	56
Friberg Mahogany Co., The .....	191	Jai Alai Club .....	44
Frey, L. A., & Sons, Inc. ....	134	Jefferson Bottling Co., Inc. ....	128
	G	Jefferson Cleaners .....	126
Gauthier, Sidney, Grocery .....	142	Jefferson Democrat .....	36
Gendron, Leon, Grocery, Cafe and Barber Shop .....	66	Jefferson Inn .....	42
General American Tank Storage Terminals .....	74	Johns-Manville Products Corp. ....	74
General Baking Co. ....	152	Johnson, J. Burrows .....	138
General Outdoor Adv. Co. ....	136		K
Glover, George J., Co., Inc. ....	150	Kammer-Delord, Inc. ....	152
Godchaux's .....	150	Karger & Kerner .....	40
Godchaux's Sugars, Inc. ....	100	Karnes, Victor E. ....	136
Gonzales Motors, Inc. ....	6	Kenner Chevrolet Co. ....	144
Grand Isle Chamber of Commerce ..	80	Kennington, A. S. "Firechief" .....	86
Great Southern Box Co., Inc. ....	32	Ketchum & Smith .....	156
Great Southern Novelty Co. ....	122	Kieckhefer Container Co. ....	156
Gretna Hardware Co. ....	140	Klauser's, E., New Beer Garden & Bar .....	166
Gretna Industries, Inc. ....	126	Klotz Cracker Factory, Ltd. ....	96
Grover's Place .....	170	Kostmayer, M. D., Agency .....	134
Gruber, Louis E. ....	16	Kress, S. H., & Co. ....	122
Gulf Coast Oil Co., Inc. ....	116	Krower, Leonard, & Son, Inc. ....	160
Gulf Coast Military Academy .....	46		L
Gulf Refining Co. ....	76	LaBruyere's Quality Stores .....	146
Gulf & Valley Cotton Oil Co., Inc. ....	140	Latter & Blum, Inc., Agents .....	126
	H	Lauricella & Co. ....	144
Hansell, F. F., & Bro., Ltd. ....	136	Lawyers Title Insurance Corp. ....	120
Harahan Service Station .....	166	Leach & Johnson, Agents .....	60
Harlem Realty Co. ....	170	Lee, Frank A. ....	128
Harvey Canal Ship Yard & Machine Shop .....	68	Leitz-Egan Funeral Home, Inc. ....	128
Harvey Lumber & Supply Co., Inc. ....	86	Leon's Place .....	148
Harvey Lumber Yard .....	166	Leson Chevrolet .....	26
Heebe's Bakery .....	70	Levy, Chas. ....	120
Hercules Powder Co., Paper Makers Chemical Division .....	62	Lincoln Oil Co., Inc. ....	138
Higgins Industries, Inc. ....	138	Lipton, Thomas J., Inc. ....	150
Hill, H. G., Stores, Inc. ....	50	Loose-Wiles Biscuit Co. ....	106
Hollywood Theatre .....	164	Loubat Glassware & Cork Co., The ..	122
Hooper, C. O. & L. E. ....	66	Louisiana Coca-Cola Bottling Co. ....	108
Hope Haven Dairy .....	146	Louisiana Conservation Dept. ....	Inside Front Cover
Hotard, Alvin E. ....	126	Louisiana Ice & Coal Co., Inc. ....	142
Humble Oil & Refining Co. ....	102	Louisiana Power and Light Co. ....	Outside Back Cover
		Louisiana State University .....	8
		Lyons, I. L., & Co., Ltd. ....	124



M	Page
Mackie, F. W.....	156
Marine Paint & Varnish Co., Inc....	92
Marrero Land & Improvement Assn., Ltd. ....	62
Martin, Ed., Sea Food Co.....	142
Martin-Owsley, Inc. ....	56
Masset's Tavern .....	170
Matthews, Geo. B., & Sons, Inc.....	160
Mayronne Lumber & Supply Co., Inc. ....	114
Melling Cement Block Works.....	162
Messina's Suburban Inn.....	168
Metairie Hardware & Paint Store...	144
Metairie Market .....	170
Metairie Ridge Ice Co., Inc.....	128
Metairie Ridge Nursery Co., Ltd.....	84
Meyer, H. L.....	148
Meyer's, Dave, Moss Gin.....	164
Midway Inn .....	164
Miller's Feed Store.....	122
Milliet, Fornest .....	116
Montaldo, Joseph .....	56
Moonlight Inn .....	144
Mothe, E. J., Funeral Director.....	96
Mullen Ship Yard.....	130
Muller Furniture Mfg. Co., Ltd.....	78
Murphy Iron & Boiler Works, Inc. ....	100
Mc	
McCune, Leo W.....	118
McWilliams Dredging Co.....	94
N	
Neeb's Hardware Store.....	162
Neptune Supply Co.....	158
Newcomb, H. Sophie, College.....	132
New Orleans Barber Supply House	158
New Orleans Brewing Co., Inc.....	90
New Orleans Cigarette Service Co.	152
New Orleans Furniture Mfg. Co.....	46
New Orleans Public Service, Inc. ....	Inside Back Cover
New Orleans Stamp & Stencil Co., Inc. ....	191
Nolan, N. J.....	160
North American Trading & Import Co., The .....	116
Norwood Farms .....	18
Novelty Woodworking Shop.....	108
O	
Original Bruning's Restaurant.....	193
Original Southport Club, The.....	38
Orleans Material & Equipment Co.	120
Orleans Steel Products Co., Inc., The .....	106
O'Shaughnessy Service, Inc.....	82
Owin, Jos. T.....	160
Ozone Co., Inc.....	158

P	Page
Paletou, J. Wallace, Inc.....	108
Pan American Petroleum Corp.....	14
Parish Drilling Corp.....	58
Parish Petroleum Corp.....	58
Pelican Cracker Factory, Inc.....	132
Pendleton, Forest C.....	100
Penick & Ford, Ltd., Inc.....	114
Perrin, Chas., Trucking Contractor	104
Perrin, Clem .....	130
Pines Inn .....	168
Pines Service Station, The.....	179
Pines Tourist Court.....	88
Pizani's, Chas., Beer Garden.....	166
Pontchartrain Lumber Co., Inc.....	112
Pullman Standard Car Mfg. Co.....	112
R	
Rainbow Inn .....	168
Reily, Wm. B., & Co., Inc.....	120
Rene's Chicken Inn.....	168
Ribaul, Joseph, Transfer & Grocery	140
Rite-Way Service Station .....	148
Rittiner, Geo. M., Agent.....	72
River Parishes Lumber Co.....	30
Rodgers, Lynn M.....	164
Roof Garden Club.....	126
Rose Petroleum Co.....	168
Rosenstock's .....	142
Rotolo Motor Co.....	20
Rowan, Peter P., Co., Ltd.....	110
Royal Beauty Supply Co., Inc.....	160
Rykoski, Inc. ....	130
S	
Salathe, Erwin T., Agent.....	50
Salcedo Distributing Co., Inc.....	136
Samuel Bros. ....	162
Schayer-Badinger, Inc. ....	138
Schieffler, E. R.....	148
Schwartz Supply Co., Inc.....	98
Seaboard Refining Co., Ltd., The...	162
Security Building & Loan Assn.....	54
Shrewsbury Ice & Feed Co., Inc.....	128
Sinclair Refining Co., Inc.....	64
Slifsgard, H., Distributor.....	126
Smith's, Ed., Stencil Works.....	150
Smith, Marshall J., & Co., Ltd.....	138
Soulé College .....	154
Southern Cotton Oil Co., The.....	28
Southern Seating & Supply Co., Inc. ....	158
Southern Shell Fish Co., Inc.....	24
Southern States Equipment Co., Inc. ....	48
Southport Petroleum Co.....	12
Spalding, A. G., & Bro.....	132
Spahr, Charles, Agent.....	14
Stafford, Derbes & Roy, Inc.....	92
Standard Supply & Hardware Co., Inc. ....	90



	Page		Page
Stauffer, Eshleman & Co., Ltd.....	156	United Liquors, Inc.....	122
Steger's .....	170	Unity Plan Finance Co., Inc.....	44
Stumpf, Archie C.....	88		
Stumpf's, John, Son.....	34	V	
Suhren, O. W.....	160	Victor's Cafe .....	158
Super Service Station.....	164	Villars, F. J., & Sons.....	170
Swanson, Frank .....	170	Vonder Haar, Frank A.....	78
Swift & Co., Fertilizer Works.....	104		
Swift & Co., Refinery.....	114	W	
		W. D. S. U., Inc.....	162
T		W. W. L. Development Co.....	82
Taylor-Seidenbach, Inc. ....	154	Wands, Inc. ....	158
Texas Co., The.....	10	Waterman, J. S., & Co., Inc.....	134
Thiberge, H. A., Printing Co., Ltd.	152	We-Go-Inn .....	166
Thomas, A. G.....	72	Weiner's Furniture Co.....	162
Tichenor, Dr. G. H., Antiseptic Co.	158	Western Union Telegraph Co.....	156
Trico Coffee Co., Inc.....	193	Whitney National Bank.....	90
Tropical Radio Telegraph Co.....	84	Williams, W. Horace, Co., Inc.....	138
Trucker's Ice & Cold Storage Co.,		Wilson Supply Co.....	104
Ltd., The .....	193	Wisser's Cafe & Grocery.....	162
		Woodward, Wight & Co., Ltd.....	102
U		World Bottling Co., Ltd.....	154
U. S. Industrial Alcohol Co.....	64		
United Gas Pipe Line Co.....	52	Z	
		Zetz 7 Up Bottling Co., Inc.....	94

W. H. PERKINS,  
PRESIDENTC. B. TURNER,  
SUPERINTENDENTBOARD OF EDUCATION  
OFFICE OF  
SUPERINTENDENT  
BATON ROUGE, LOUISIANA

May 16, 1938

Superintendent J. C. Ellis  
Gretna, Louisiana

Dear Mr. Ellis:

In my capacity as Chairman of the State Band Contest Committee during the festival held in Baton Rouge on May 6 and 7, I had occasion to notice carefully the performance and general conduct of the fifty-odd bands entered from all sections of the State. One band in particular impressed me throughout the contest with its fine discipline, excellent conduct, distinguished appearance, and superior performance. I refer to your parish band, directed by Dr. R. C. Edwards, and feel that I should not be doing these children and their director full justice unless I were to call their fine performance to your attention. There were many excellent bands entered in the contest, but none so impressed me as did the Jefferson Parish Band, which was not only one of the best but also the largest.

This is the only such letter of commendation I am writing.

Yours very truly,

J. B. Myers  
Assistant Superintendent.

JBM:hh





JUSTIN F. BORDENAVE  
Editor and Publisher

ANNIE LAURA HOWARD  
Associate Editor

JOSEPH H. MONIES  
Business Manager

Circulation of the

**OFFICIAL PUBLICATION OF THE POLICE JURY OF  
JEFFERSON PARISH**

1937—5,000 Copies • This, the 1938 Issue—10,000 Copies

This book manufactured in its entirety by Union Labor

**THE AMERICAN PRINTING COMPANY, LIMITED**

ADAM SCHAFF  
Foreman of the Press Department  
P. E. G. PLASWIRTH  
Head of the Linotype Department

A. A. CANTELLI  
Foreman of the Composing Department  
L. H. HEMARD  
Foreman of the Binding Department

Engravings by  
**CRESCENT CITY ENGRAVING CO.**

Photography by:  
EUGENE A. DELCROIX

Art Work:  
A. V. HALL

**The AMERICAN PRINTING COMPANY, Ltd.**

Quality Printing at Moderate Cost

535-537 Poydras Street

RAYmond 0806

New Orleans

THIS BOOK IS A SAMPLE OF OUR WORK



# Congratulations To Our Neighbor



Jefferson Parish has made great strides during the last decade . . . the magnificent Huey P. Long Bridge, which spans the mighty Mississippi, has united the Westbank and Eastbank of this progressive parish . . . miles of concrete roads stretch from one end of the parish to the other, with many more miles now under construction . . . a modern school system has been established . . . the endless bayous and marshes find motor-driven vehicles and motor boats carrying on all classes of trade; fishing, trapping, hunting . . . large industrial plants dot the whole parish . . . the Intracoastal Canal, the seafood industry, the modern truck farms and dairies—all contribute to the growth and development of Jefferson.

This company, which furnishes the City of New Orleans with electrical, gas and transportation services, extends best wishes to Jefferson Parish for continued growth and development.

**New Orleans Public Service Inc.**



**IN THE DEAD OF NIGHT... ELECTRIC SERVICE IS**

**ALIVE!**



Electric service from our Company is as certain as the stars. Dependable at every hour—day or night, now or years ahead. Electricity is a guard against intruders in your home, ready to aid you in grave emergencies—or merely to warm baby's two o'clock bottle.

Industry, too, has come to rely completely on our electric service as the sure source of economical power. As Louisiana industries grow and expand—as new factories begin—it is gratifying to know that our Company is a working team-mate of industry, contributing to the progress of Jefferson Parish—helping to build Louisiana.

**ELECTRIC SERVICE**



**BUILDER OF INDUSTRY**



**LOUISIANA POWER & LIGHT COMPANY**